

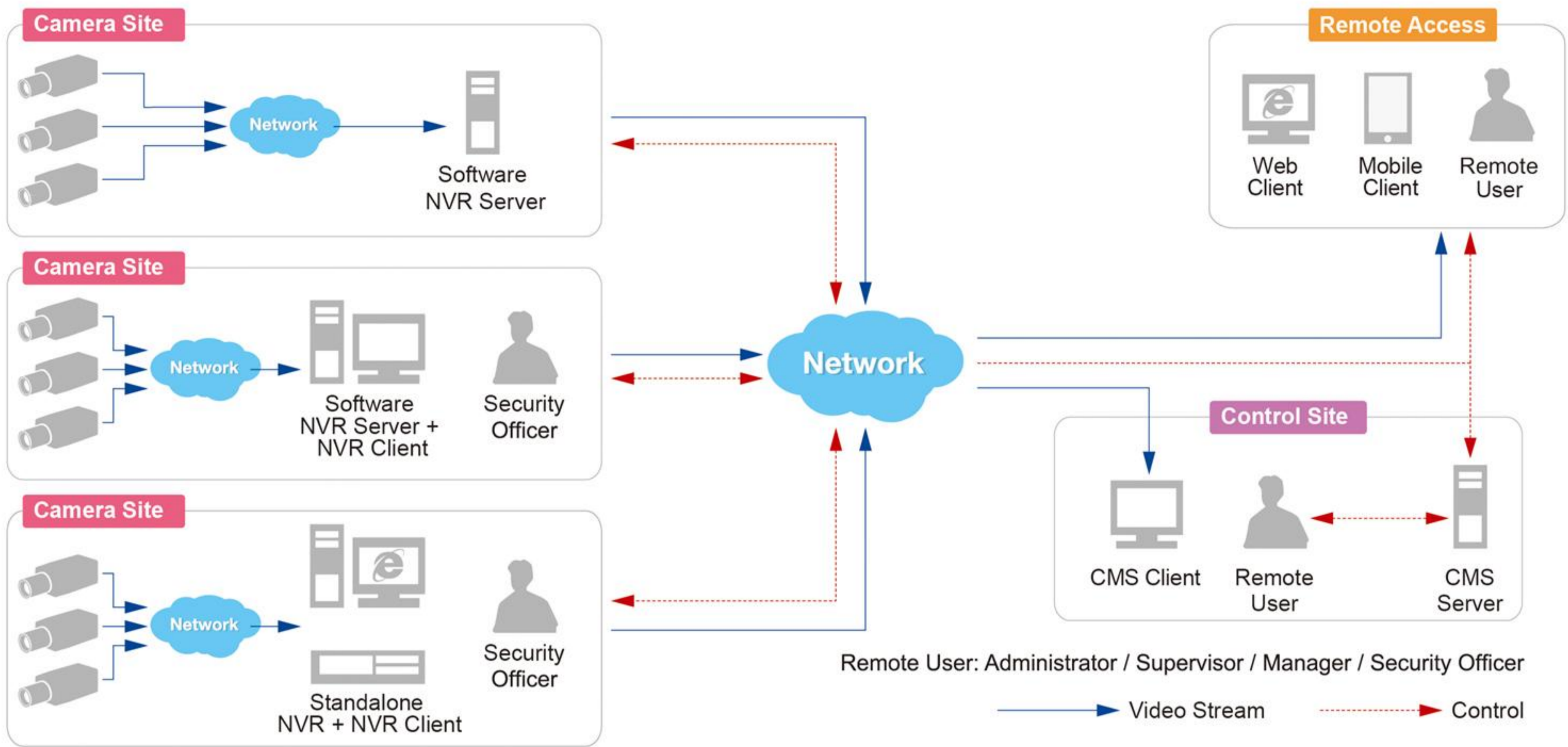
2012 Solution Guide

IP Surveillance – Seeing It All



Optical Zoom / Auto Focus
Central Management System
4-Megapixel 180/360 Degree
Clear Resolution up to 1650 TVL

Solution Architecture



Video Management System Applications

Site	Video Management System	Applications
Camera Site	Software NVR	<ul style="list-style-type: none"> ◆ Live view, playback, PTZ control, event management ◆ 64-channel synchronized playback* ◆ Event speed up recording* ◆ Instant & continuous playback*
	Standalone NVR	<ul style="list-style-type: none"> ◆ Live view, playback, PTZ control, event management ◆ Robust embedded Linux NVR ◆ Plug & play installation and user friendly interface ◆ Built-in RAID storage
Control Site	CMS**	<ul style="list-style-type: none"> ◆ Manage unlimited number of NVR servers and IP cameras ◆ Live view, playback, PTZ control, event management
Flexible Remote Access	NVR or CMS Client	<ul style="list-style-type: none"> ◆ Live view, playback, PTZ control, event management
	Mobile Client	<ul style="list-style-type: none"> ◆ Live view, playback, PTZ control

* Available in software NVR 3.0

** CMS 1.1 is compatible with software NVR 2.3.

CMS 2.0 is compatible with software NVR 3.0 and ACTi standalone NVR, and will be available from Q3, 2012.

Aisles



KCM-3911

- Clear overview
 - 180°/360° panorama and ePTZ
- Recognize movement and behaviors
 - 4-Megapixel

Entrance



KCM-7111

- Recognize faces
 - 4-Megapixel
- Different lighting conditions
 - Adaptive profiles

Retail

Cashier



KCM-3311

- Recognize faces and transactions
 - 4-Megapixel
 - 3.6x optical zoom with Auto Focus

If a robbery happens...



NVR 3.0

- Event speed up recording
- Instant playback

Building Surroundings



KCM-5211E

- Clear details
 - 18x optical zoom with Auto Focus
 - 4-Megapixel
- Different lighting conditions
 - Adaptive profiles
 - Extreme Dynamic Range and 2D+3D DNR

Hallway



KCM-5511

- Clear details
 - 26x optical zoom with Auto Focus
 - 2-Megapixel
- Different lighting conditions
 - Adaptive profiles
 - Extreme Dynamic Range and 2D+3D DNR

Main Gate



KCM-7211

- Recognize faces
 - 4-Megapixel
 - 3.6x optical zoom with Auto Focus
- Different lighting conditions
 - Adaptive profiles

Building

Camera Site



Standalone NVR

- Convenient and easy management
 - Plug & Play installation and user friendly interface
- Multi-level user permissions

Security Guard



Mobile Client

- Easy access to live view
- PTZ control
- Search and Playback video with both time based and event based search functions

Control Center



CMS

- Manage unlimited number of NVR servers and IP cameras
- Multi-level user permissions





IP Camera

<p>4-Megapixel Full HD 1080p</p>						
<p>2-Megapixel Full HD 1080p</p>						
<p>1.3-Megapixel HD 720P</p>						
<p>D1</p>						

Video Encoder

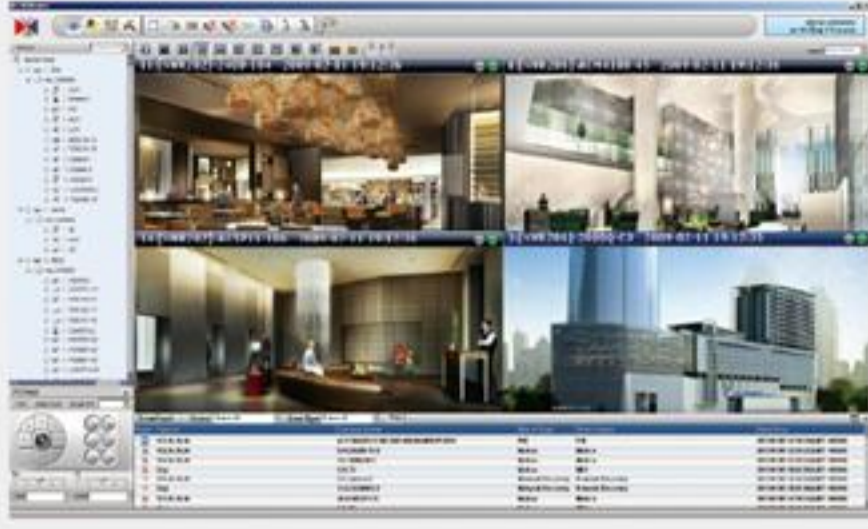
<p>16-channel</p>		<p>4-channel</p>	
<p>8-channel</p>		<p>1-channel</p>	

Network Video Recorder

				
	NVR 2.3	NVR 3	GNR-2000	XNR-4200
Channel	≤ 64	≤ 64	≤ 16	≤ 64
Type	Software	Software	Hardware Standalone	Hardware Standalone
Operating System	Windows	Windows	Embedded Linux	Embedded Linux
Synchronized Playback	4-channel	64-channel	4-channel	4-channel
Event Recording Speed Up	NO	YES	NO	NO

Successful Project References

Residential Building



Thailand

Novotel Platinum Hotel
Software: ACTi CMS and NVR

Retail



UK

Wellworths Chain Store
Software: ACTi NVR

Transportation



Switzerland

AGROLA Gas Station
Software: ACTi Standalone NVR

Industrial



Brazil

Müller Distributor
Software: ACTi NVR and NUUO

Education



USA

Michigan Technology University
Software: Video Insight NVR

Retail



Canada

Mac's Convenience Store
Software: Exacq NVR

Government



Sudan

National Electricity Corporation
Software: Milestone NVR

Bank



China

Bank in China
Software: Net Posa NVR

Worry Free Support



ACE Training

ACTi Certified Education (ACE) program provides a comprehensive training which helps our partners learn more about IP system design, proposing and installing IP surveillance project.



Project Planner

ACTi Project Planner is a useful tool which helps you to plan any IP-based project effectively.



Customer Helpdesk

Our professional engineers are always here to solve your technical problems.



www.use-ip.co.uk
01304 827609

ACTi Software Partners

