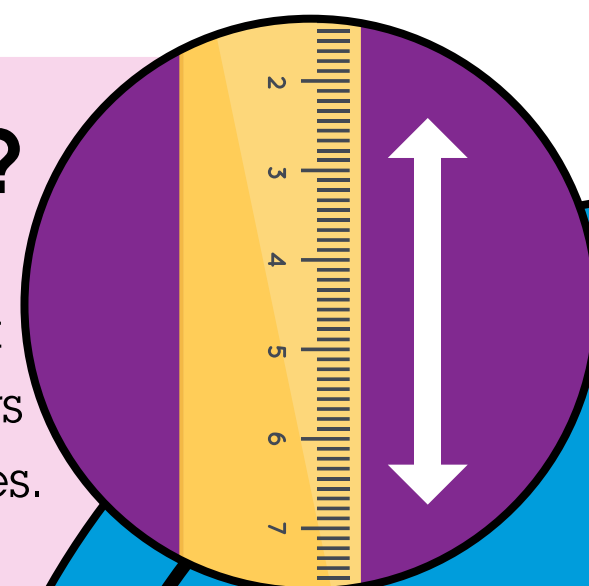


# 6 questions you forgot to ask when developing your **PERIMETER PROTECTION PLAN**

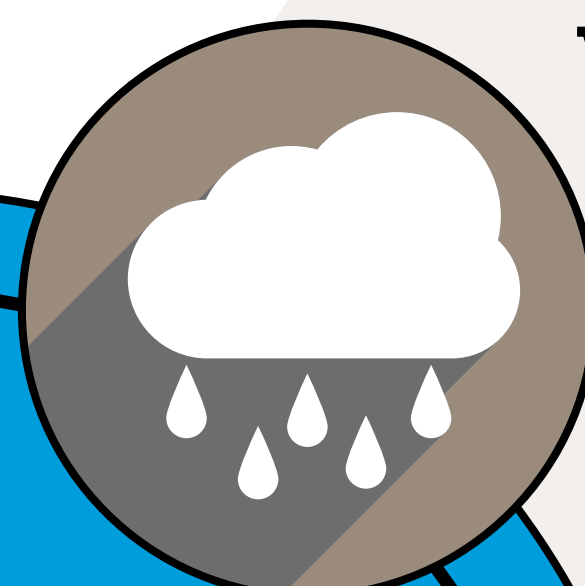
## How can I define “perimeter”?

Defining the critical nature of the perimeter is different for each situation. We often forget about dual perimeters, height perimeters and other unique circumstances.



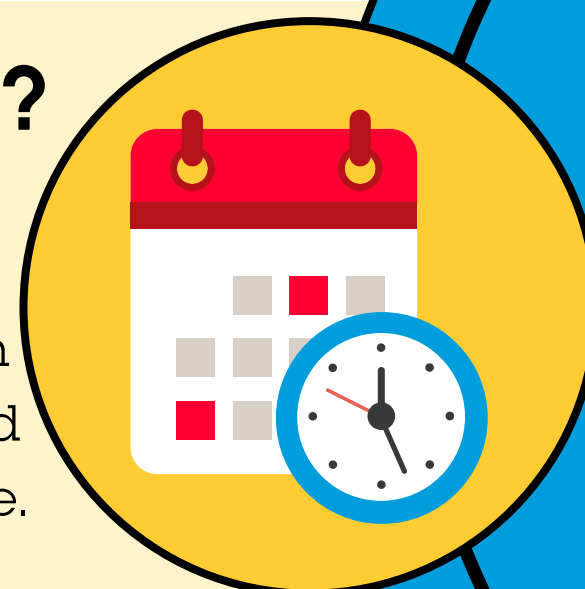
## Will climate or environmental conditions affect my detection?

There are many analytics and complimentary technologies to add to your system to turn your system into a “smart” system that can detect during the dark night, stormy conditions or extreme heat. Use certified outdoor equipment that meets operating temperature ranges of the environment.



## Is my technology up to date?

By the time you purchase and install your equipment, there could be upgrades to technology. Work with your vendors to learn about when the release of hardware and software updates are available.



# TOP 6 QUESTIONS

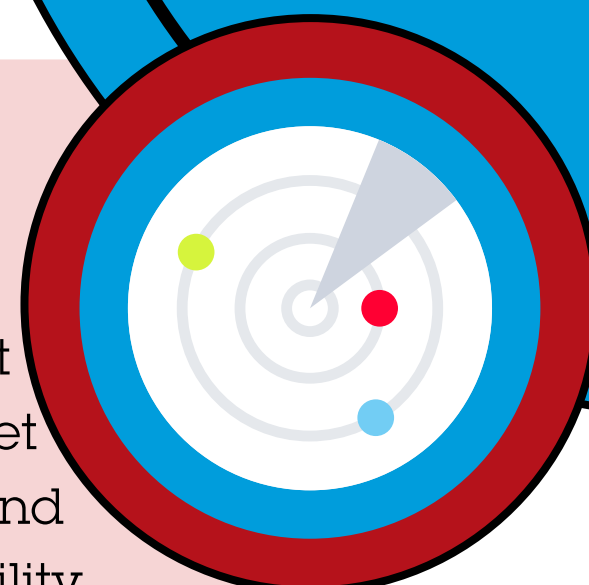
## Who receives the alert and how do they receive the alert?

Your response mechanism must be addressed. Remote monitoring is now a necessity for most perimeter protection systems.



## What is my detection coverage?

Not only should you be thinking about the distance you want to detect motion, but also about the depth of that distance. For example, is it important to detect at 1000 feet as well as at 10 feet from the line of protection? Avoid blind or dead spots as these can be areas of vulnerability.



## How can I determine what caused the alert?

Detecting an alert is great. But what use is it if you cannot determine who or what has breached your perimeter? There are many ways to reduce false positives.

