

Installation Guide

PoE Injector and PoE Splitter

To ask questions, find answers, and communicate with TP-Link users or engineers, please visit <https://community.tp-link.com> to join TP-Link Community.

For technical support and other information, please visit <https://www.tp-link.com/support>, or simply scan the QR code.

If you have any suggestions or needs on the product guides, welcome to email techwriter@tp-link.com.cn.

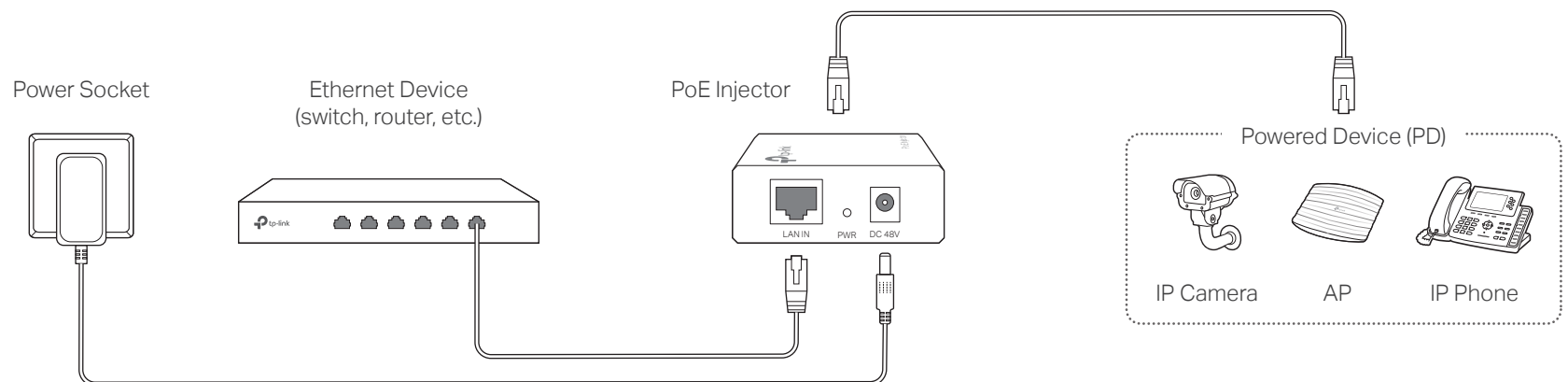


© 2020 TP-Link 7106508857 REV5.1.0

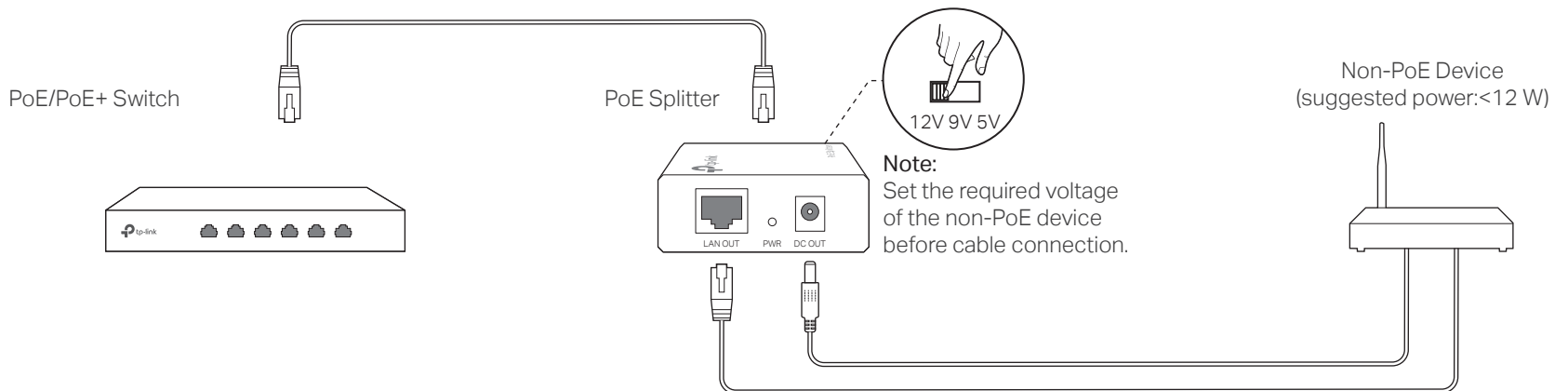
Some models featured in this guide may be unavailable in your country or region. For local sales information, visit <https://www.tp-link.com>.

For simplicity, we will take TL-POE150S and TL-POE10R for example throughout the Guide, other models may differ in appearance.

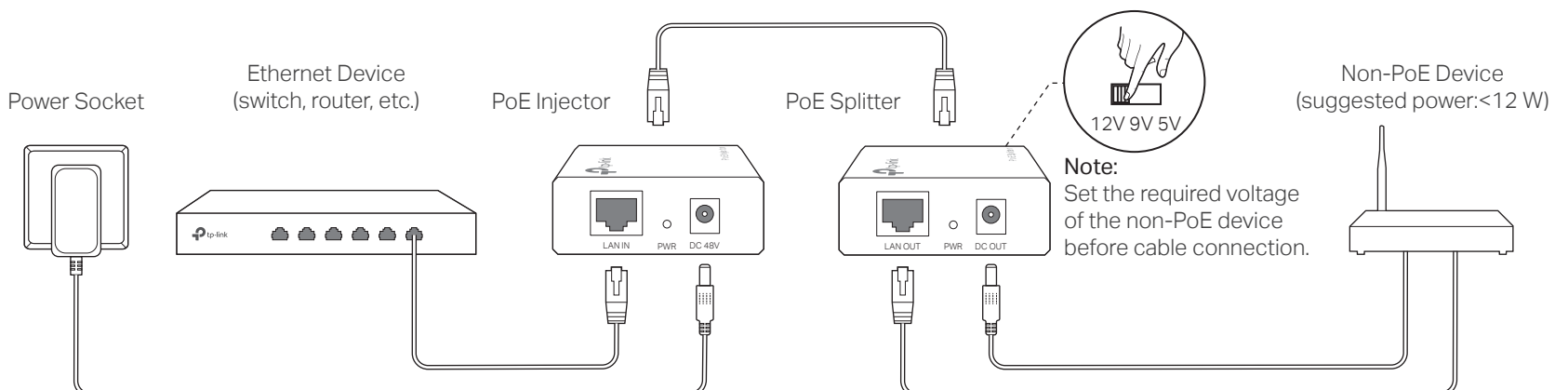
PoE Injector Only The PoE Injector supplies steady power and data connectivity to a powered device such as PoE IP Camera, PoE AP and PoE IP Phone through an Ethernet cable.



PoE Splitter Only The PoE Splitter can be used with a PoE/PoE+ switch to deliver direct current (DC) power and data to a Non-PoE device.

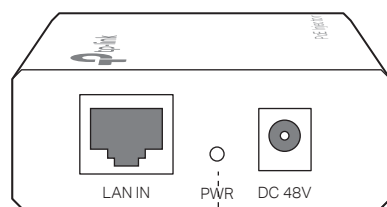


PoE Injector & Splitter The PoE injector and PoE splitter can be used as a kit to supply power and transmit data to a Non-PoE device.

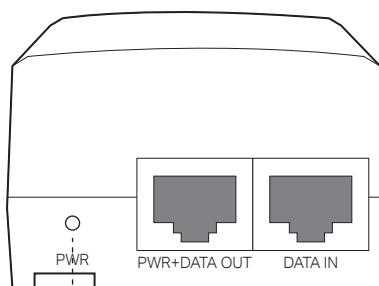


Power LED Explanation

PoE Injector:

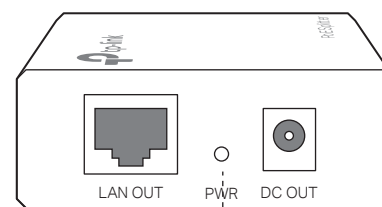


On: Supplying power normally
Flashing: No PD is connected/Supplying power abnormally
Off: No power supply



On: Supplying power normally
Off: No power supply

PoE Splitter:



On: Connected to PSE correctly
Off: No PSE is connected

FAQ

Q1. Can the PoE injector supply power to a PoE device which doesn't have a gigabit PoE port?

A: Yes. All RJ45 ports of the PoE injector support 10/100/1000 Mbps auto-negotiation.

Q2. What can I do if my PoE injector doesn't supply power to the powered device or the supplied power is unstable?

- A1:** Ensure the PD is PoE-compliant and its connecting port supports the PoE function.
- A2:** For TL-POE150S, ensure the power consumption of the PD doesn't exceed 15.4 W; for TL-POE160S, ensure the power consumption of the PD doesn't exceed 30 W, otherwise the overload protection of the PoE injector will be activated. The quality and length of the Ethernet cable may influence the reception of the power supply.

Q3. Must I use the PoE injector together with the PoE splitter?

A: No. The PoE injector can supply power to all PDs support PoE function. The PoE splitter is used with a PoE switch or the PoE injector to supply power to a non-PoE device.

Specifications

General Specifications

Standards	IEEE 802.3i, IEEE802.3u, IEEE 802.3ab, IEEE 802.3af IEEE 802.3at (only for TL-POE160S)
LED	PWR
Cable Type	UTP/STP of Cat. 5 or above (based on the standards that the connected devices comply with)
Ports	TL-POE150S: <ul style="list-style-type: none"> • 10/100/1000 Mbps Auto-Negotiation RJ45 LAN IN Port • 10/100/1000 Mbps Auto-Negotiation RJ45 POWER+DATA OUT Port • DC 48 V Power Input Port
	TL-POE160S: <ul style="list-style-type: none"> • 10/100/1000 Mbps Auto-Negotiation RJ45 DATA IN Port • 10/100/1000 Mbps Auto-Negotiation RJ45 PWR+DATA OUT Port • AC 100–240 V 50/60 Hz Power Input Port
	TL-POE10R: <ul style="list-style-type: none"> • 10/100/1000 Mbps Auto-Negotiation RJ45 POWER+DATA IN Port • 10/100/1000 Mbps Auto-Negotiation RJ45 LAN OUT Port • 5 V/9 V/12 V DC OUT Power Output Port
Wall Mountable	TL-POE150S/TL-POE10R: No TL-POE160S: Yes

Environmental and Physical Specifications

Operating Temperature	0 °C to 40 °C (32 °F to 104 °F)
Storage Temperature	-40 °C to 70 °C (-40 °F to 158 °F)
Operating Humidity	10% to 90% non-condensing
Storage Humidity	5% to 90% non-condensing

Safety Information

- Keep the device away from water, fire, humidity or hot environments.
- Do not attempt to disassemble, repair, or modify the device. If you need service, please contact us.
- Do not use any other chargers than those recommended.
- Do not use damaged charger or USB cable to charge the device.
- Adapter shall be installed near the equipment and shall be easily accessible.

Please read and follow the above safety information when operating the device. We cannot guarantee that no accidents or damage will occur due to improper use of the device. Please use this product with care and operate at your own risk.

EU Declaration of Conformity

TP-Link hereby declares that the device is in compliance with the essential requirements and other relevant provisions of directives 2014/30/EU, 2014/35/EU, 2009/125/EC, 2011/65/EU and (EU)2015/863. The original EU declaration of conformity may be found at <https://www.tp-link.com/en/ce>.

