

v1.2

wiseNET mobile

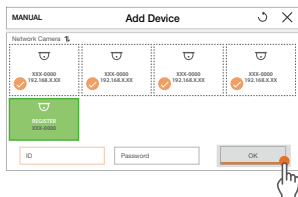
User Manual



REGISTRATION

Registration

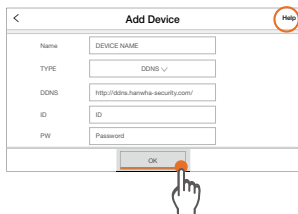
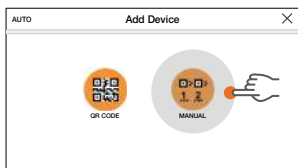
Auto Search for Devices



When the smartphone and the device are connected to the same Wi-Fi network

1. The list of devices that have been found will appear automatically.
 - When clicking [1.] button, you can select the method to sort the device list.
2. Enter the ID and the password, and click <OK>.
 - Devices that use the same ID and password can be added immediately.
3. Adding devices is complete.

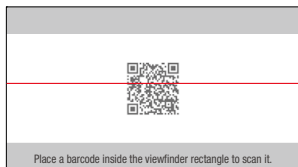
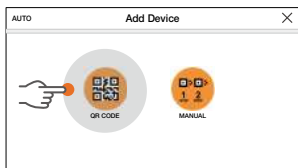
Adding Devices Manually



An explanation for each item is provided.

1. Click the manual button.
2. Enter the connection information, and click <OK>.
3. Adding devices is complete.

Adding Devices using a QR Code



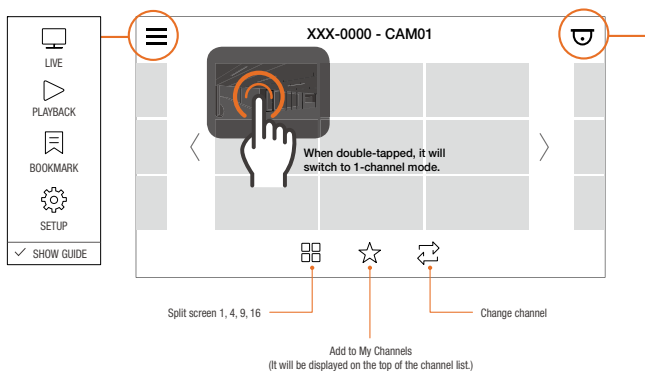
When the device has a QR code sticker attached

1. Click the QR code item.
2. Scan the QR code of the device with the smartphone.
3. Adding devices is complete when the QR code of the device has been identified.

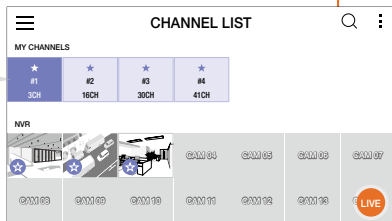


LIVE MONITORING

Live Monitoring Main Screen and Button Description



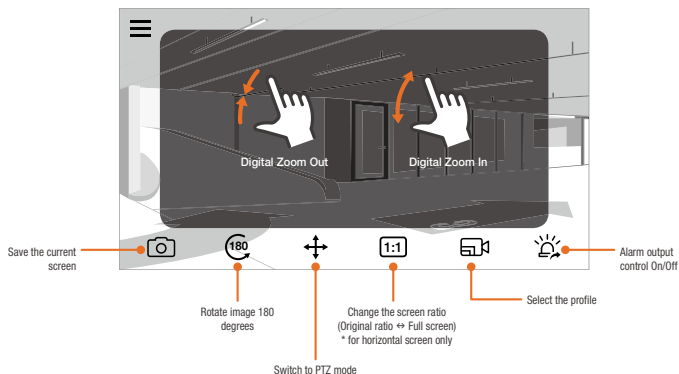
It is added to My Channels when the button [★] on the bottom of the live main channel is clicked, and it will be displayed on the top of the channel list.





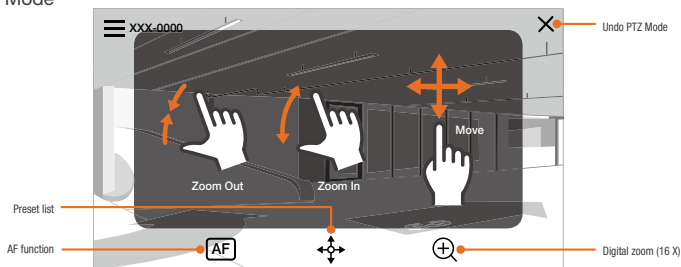
LIVE MONITORING

1-Channel Mode Screen and Button Description



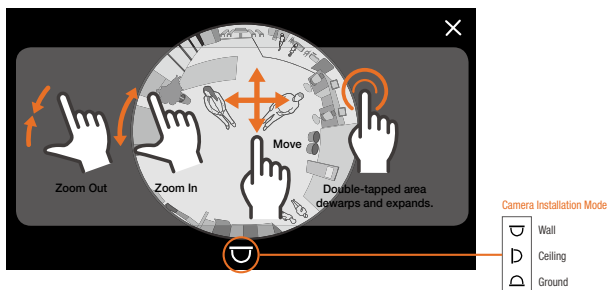
! Individual features may vary depending on the model.

PTZ Mode



! If you keep your hand on when using pan tilt drag, it will keep moving in that direction.

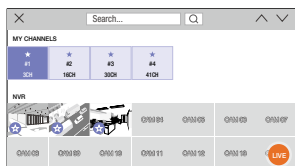
Fisheye Mode

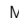



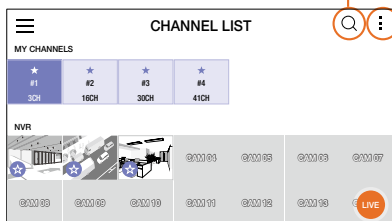


CHANNEL LIST

Channel List Screen

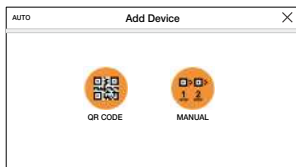


1. Move to the channel list by clicking [] on the top right of live monitoring.
2. Channel list can be searched when [] on the top right of the channel list screen is clicked.

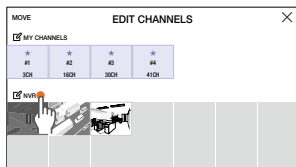


Press the button to move to the corresponding function.

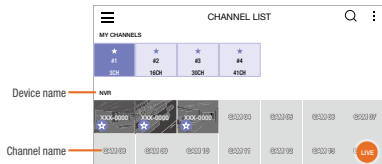
1 Adding New Devices



2 Modify Channel Information



3 Showing the Device Name/Channel Name



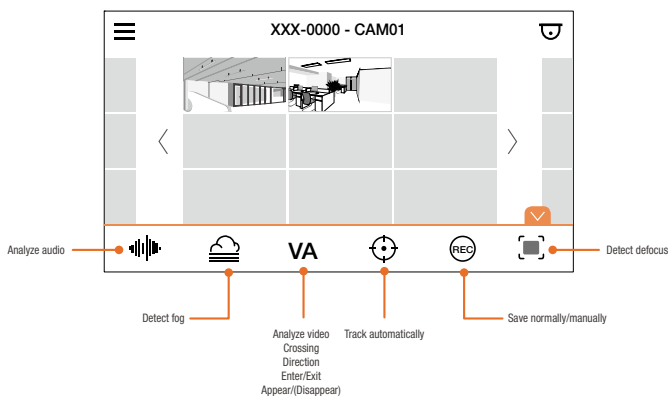
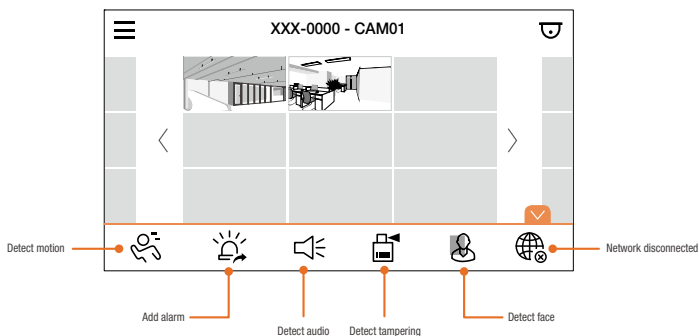
! When editing/deleting the connection information
Select the channel (thumbnail tile) if using the **Camera**.
Select the device name if using **NVR**.





SEARCH & PLAYBACK

Event List

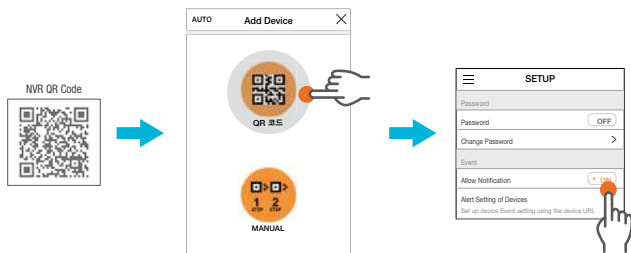




PUSH NOTIFICATION

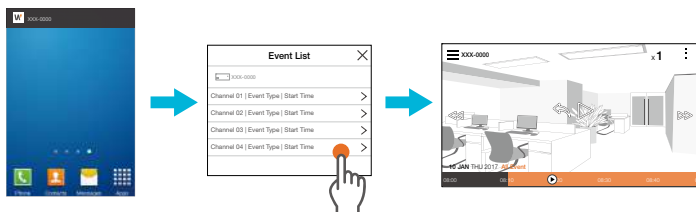
Setting and Receiving Push Notifications

Settings



1. Register the QR code attached on NVR.
 - An NVR registered using a QR code can use push notifications.
2. When the registration is complete, set the **<Allow Notification>** item to **<ON>** after going to the settings screen.
3. Set the device to **<ON>** in the **<Device Setting>** item .

Receiving Push Notifications

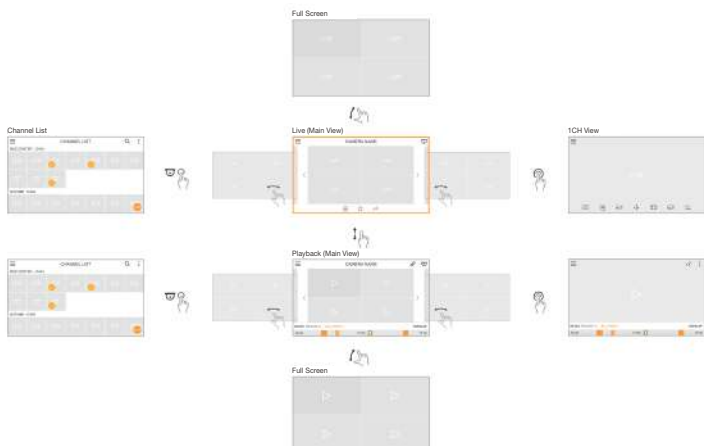


1. A push event receiving screen will appear when an event occurs.
 - It can be received after the **<Allow Notification>** item has been set in the Settings screen.
 - The view can vary according to the Event Push Notifications style the user has set in the mobile terminal.
2. Click on the event in the push event receiving screen.
3. It moves to playback screen after running the app when the event is selected.

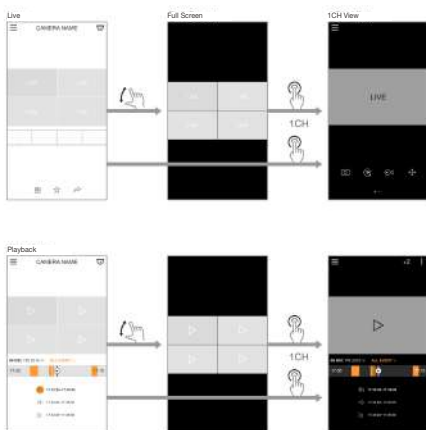


APPENDIX

Using Scenario



Full & Detail view rule



Head Office

6, Pangyo-ro 319 beon-gil, Bundang-gu, Seongnam-si,
Gyeonggi-do, 463-400 Rep. of KOREA
Tel : +82.70.7147.8753 Fax : +82.31.8018.3740
www.hanwha-security.com

Hanwha Techwin America

500 Frank W. Burr Blvd. Suite 43 Teaneck, NJ 07666
Toll Free +1.877.213.1222 Direct +1.201.325.6920
Fax +1.201.373.0124
www.hanwha-security.com

Hanwha Techwin Europe

Heriot House, Heriot Road, Chertsey, Surrey, KT16 9DT, United Kingdom
Tel +44.1932.57.8100 Fax +44.1932.57.8101
www.hanwha-security.eu
