



MAKE
MODEL
COLOUR
TYPE
NBR PLATE

WISENET Road AI

MAKE, MODEL, COLOUR RECOGNITION

INTELLIGENT EDGE-BASED ANPR

- Smart search (number plate, country, make, model, colour)
- Vehicle type recognition: car, van, SUV, LCV, truck, bus, motorcycle
- 70+ brands recognised, 600+ models
- Road usage statistics in various display formats
- Supports VMS integrations



Intelligent traffic management solutions

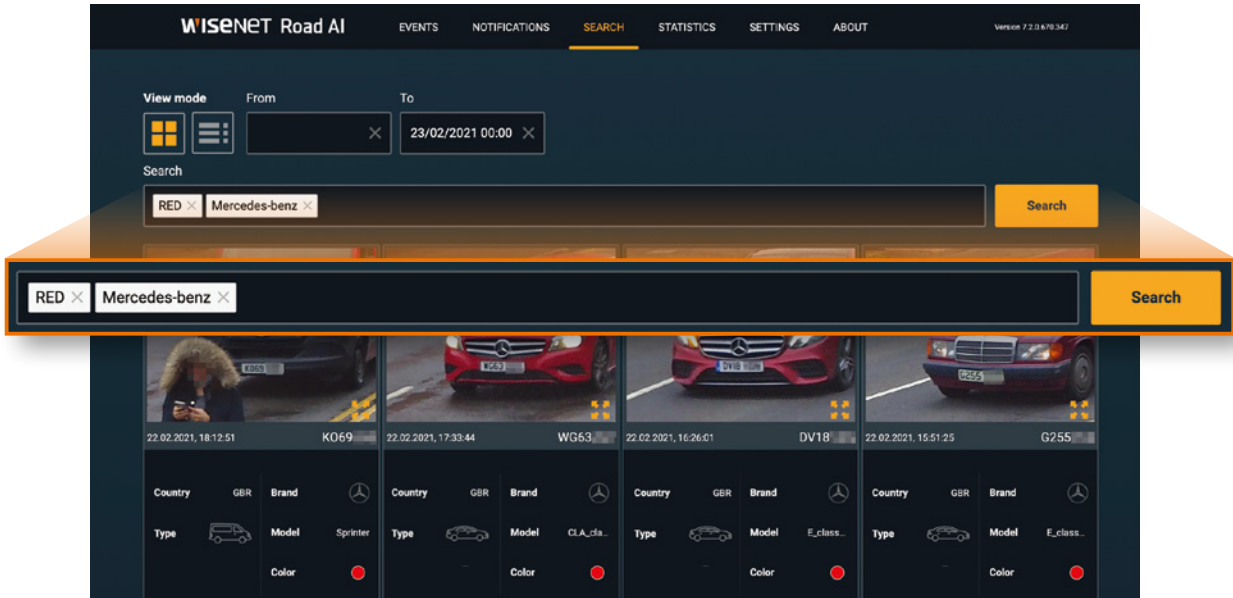
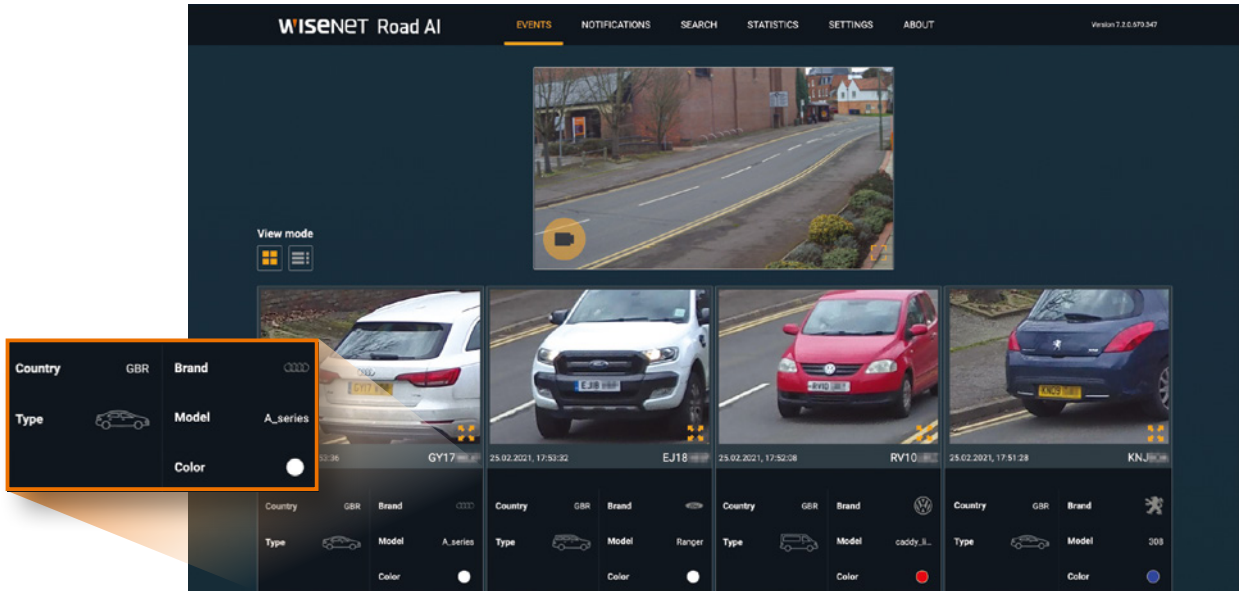
Wisenet Road AI is one of a wide range of traffic management solutions offered by Hanwha Techwin. These range from car park access control for business applications, through to large scale city wide based systems that enable local authorities and police to keep people safe, as well as detect illegally parked vehicles and other traffic infringements.

Accurate AI based ANPR and Make, Model, Colour Recognition (MMCR)

The Wisenet Road AI solution is supplied as a pre-loaded application on the PNV-A9081RLP vandal-resistant dome, PNO-A9081RLP bullet and PNB-A9001LP box cameras.

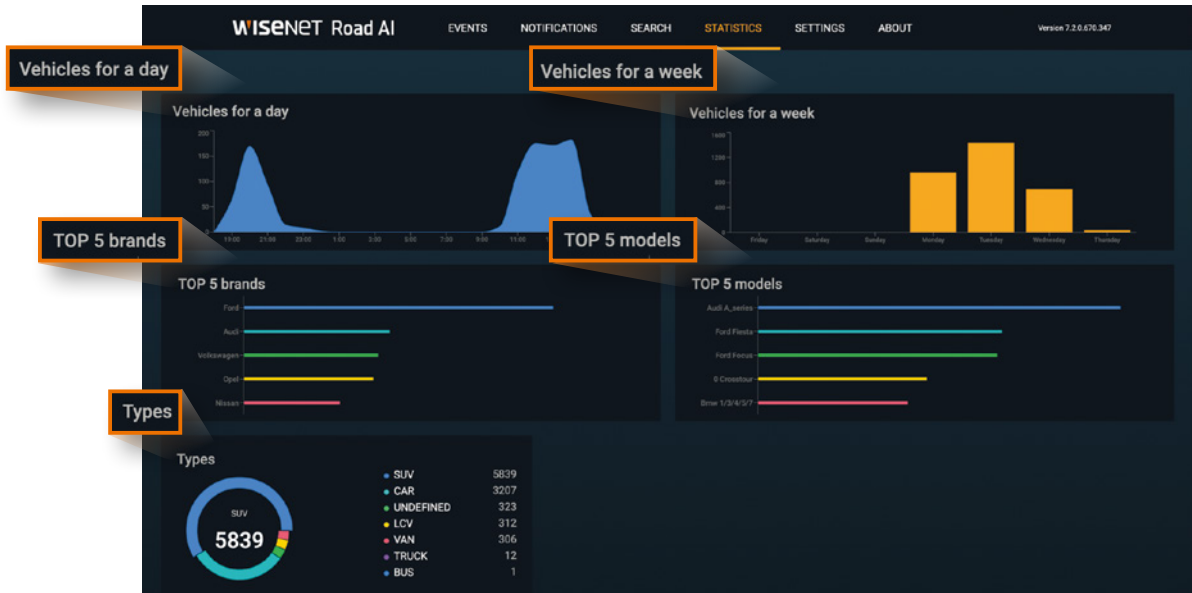
Efficient Smart Search

The results of searches by country, colour, make and model can be exported as lists in Excel format. Up to 500 vehicles per list.



Insightful Statistics

Wisenet Road AI supports various widgets and visual graphs to enable the display of daily, weekly and monthly traffic statistics. These utilise the latest 10,000 cars added to the database.



Number Plate Recognition

BestShot images of vehicle number plates are converted into machine-readable text and numbers by built-in Optical Character Recognition (OCR) processing technology.



Make, Model, Colour Recognition (MMCR)

Powerful deep learning AI algorithm allows recognition of vehicle brands, models, and colours.

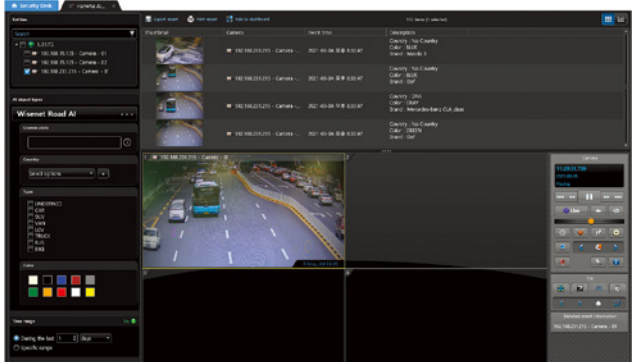


Vehicle type recognition

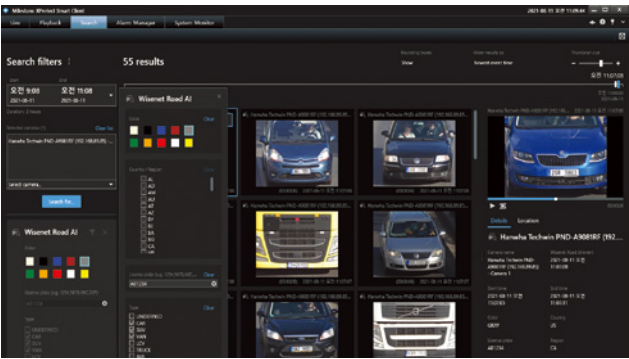
Vehicles are classified into 7 types (CAR, SUV, VAN, LCV, TRUCK, BUS, Motorcycle) for easy and efficient events/object search.

VMS integration

Wisenet Road AI offers seamless integration with video management software (VMS) from Genetec and Milestone, as well as with Wisenet Wave and Wisenet SSM. This provides users with the flexibility to monitor and manage Wisenet Road AI alongside their other video surveillance systems.



with Genetec



with Milestone

Available Countries

- Albania, Armenia, Austria, Belarus, Belgium, Bosnia and Herzegovina, Bulgaria, Cyprus, Czechia, Denmark, Estonia, Finland, France, Greece, Germany, Hungary, Ireland, Iceland, Italy, Lithuania, Luxembourg, Latvia, Montenegro, North Macedonia, Malta, Netherlands, Norway, Poland, Portugal, Romania, Serbia, Slovenia, Slovakia, Spain, Switzerland, Turkey, United Kingdom, United States of America, Canada, Russian Federation, Azerbaijan, Uzbekistan, Ukraine, Kyrgyzstan, Kazakhstan, Tajikistan, Georgia, Turkmenistan, Australia, New Zealand, Hong Kong, Indonesia, Vietnam, Taiwan, Bahrain, Kuwait, Oman, Qatar, KSA (Kingdom of Saudi Arabia), UAE, South Africa

* Supported features may vary by region. Please contact your regional manager for more details.
Every country listed above will be supported through a Wisenet Road AI application update scheduled in December 2021.

Specification



PNV-A9081RLP
4K AI IR LPR Vandal Dome Camera



PNO-A9081RLP
4K AI IR LPR Bullet Camera



PNB-A9001LP
4K AI LPR Box Camera

Imaging Device	1/1.8" CMOS		
Min. Illumination	Colour : 0.05Lux (F1.6, 1/30sec), BW : 0Lux (IR LED on)		Colour : 0.03Lux (F1.2, 1/30sec)
Video Output	CVBS : 1.0 Vp-p, Micro USB Type B		
Focal Length	4.5~10mm(2.2x) motorized varifocal		-
Angular Field of View	H : 101.4°(Wide)~45.5°(Tele) / V : 53.6°(Wide)~25.5°(Tele) / D : 120.7°(Wide)~52.3°(Tele)		-
Pan / Tilt / Rotate	0°~360° / -45°~85° / 0°~355°	-	
IR Viewable Length	30m(98.42ft)		-
Day & Night	Auto(ICR)		
Wide Dynamic Range	120dB		
Digital Noise Reduction	SSNR V		
Digital Image Stabilization	Support (built-in gyro sensor)		
Analytics	Defocus detection, Motion detection, Appear/Disappear, Tampering, Audio detection, Sound classification, Shock detection		
Alarm I/O	1/1		
Audio I/O	Line in / Line out		
Resolution / Max. Frame Rate	8MP/30fps		
WiseStream	WiseStream II		
Streaming	Up to 3 profiles		
Edge Storage	Pre-installed with 32GB Micro SD to support 10,000 LPR images		
Application Programming Interface	ONVIF Profile S/G/TSUNAPI(HTTP API) Wisenet open platform		
Operating Temperature	-40°C ~ +55°C(-40°F ~ +131°F) * Start up above -10°C		-10°C ~ +55°C(+14°F ~ +131°F)
Certification	IP66/IP67/IP6K9K, IK10+, NEMA4X	IP66/IP67, IK10, NEMA4X	-
Power Consumption	PoE+ : Max 20.00W, typical 17.00W 12VDC : Max 18.70W, typical 15.00W	PoE+ : Max 20.00W, typical 17.00W 12VDC : Max 18.00W, typical 16.00W	PoE+ : Max 16.50W, typical 12.50W 12VDC : Max 13.50W, typical 10.80W
LPR/ANPR/MMCR			
Speed Description	Moderate Speed / Low speed		High Speed / Regular speed
Speed limit	Up to 70km/hr (45mph) / Up to 40km/hr (25mph)		Up to 140km/hr (90mph) / Up to 100km/hr (65mph)
Min. Forward Distance	12m (38ft) / 10m (33ft)		27m (90ft) / 16m (52ft)
Max. Forward Distance	17m (55ft) / 16m (52ft)		46m (150ft)
Max. Horizontal Angle	25° / 30°		15° / 25°
Max. Vertical Angle	25° / 30°		15° / 25°
Horizontal Offset	Up to 5m (18ft) / Up to 7m (24ft)		Up to 4m (12ft) / Up to 7m (24ft)
Camera Height	Up to 5m (18ft) / Up to 7m (24ft)		Up to 7m (24ft)
Lane Coverage	Up to 2 lanes		
Vehicle Recognition	Make : 70+ / Model : 600+ / Colour : 10		

Hanwha Techwin Europe

Heriot House, Heriot Road, Chertsey, Surrey, KT16 9DT, United Kingdom

Tel: +44.1932.57.8100

Fax: +44.1932.57.8101

www.hanwha-security.eu

October 2021

© 2021 Hanwha Techwin Co., Ltd. All rights reserved.

DESIGN AND SPECIFICATIONS ARE SUBJECT TO CHANGE WITHOUT NOTICE

Under no circumstances, this document shall be reproduced, distributed or changed, partially or wholly, without formal authorization of Hanwha Techwin Co., Ltd.

* Wisenet is the proprietary brand of Hanwha Techwin, formerly known as Samsung Techwin.

