

AXIS TU8004 90 W Midspan

For high-power devices

AXIS TU8004 is a single port 90 W midspan, compliant with IEEE 802.3bt and High PoE devices. Power over Ethernet (PoE) offers an easy, fast and cost-effective solution for powering network products. In a single network cable, a PoE midspan injects power and data to the network device with built-in PoE support. No need to replace existing Ethernet switches and cabling infrastructure. AXIS TU6011 Mains Cable is sold separately. The midspan can be installed on a wall, shelf or DIN rail with AXIS T91A03 DIN Rail Clip A.

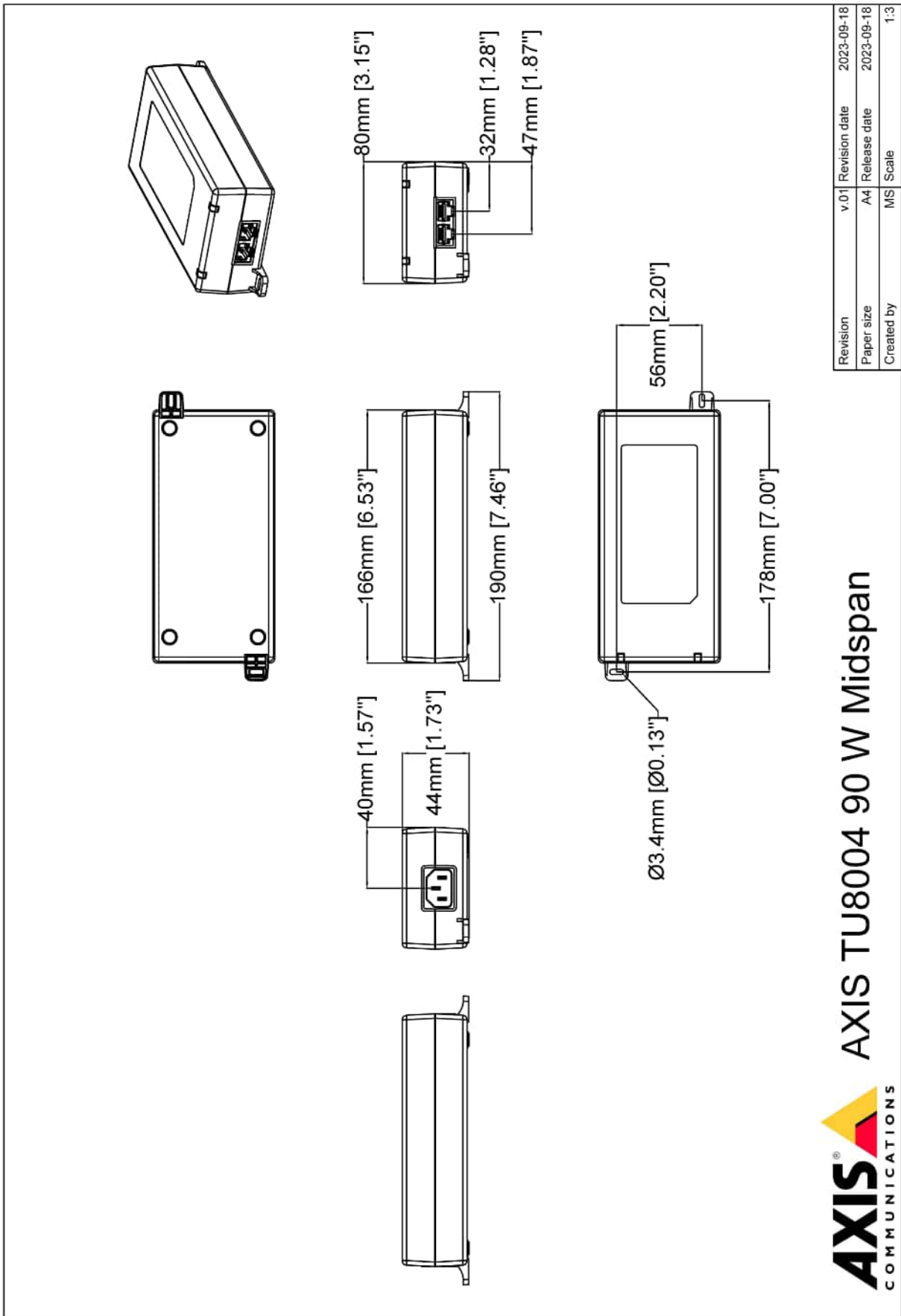
- > [IEEE 802.3bt and High PoE](#)
- > [Supports 90 W AXIS devices](#)
- > [100-240 V AC](#)
- > [Mains cable sold separately](#)



AXIS TU8004 90 W Midspan

Midspans	
Function	Data and power are fed to a network video product through an Ethernet cable Use together with a PoE splitter for a network video product without built-in PoE support
Data rate	10/100/1000/2500/5000 Mbps
Installation and management	Automatically detects PoE, PoE+, High PoE and PoE++ -enabled devices and supplies inline power.
Data & power	
Power	At 15 W: Power over Ethernet IEEE 802.3af At 30 W: Power over Ethernet IEEE 802.3at At 60 W: High Power over Ethernet Dual signature (Axis PoE 60 W implementation) At 60 W to 90 W: Power over Ethernet IEEE 802.3bt
Input	AC input voltage: 100 to 240 V AC AC frequency: 50–60 Hz
Output	57 V DC (max 90 W)
Connectors	Shielded RJ45, EIA 568A and 568B C14 connector
Wiring	Data provided over pairs 1/2 and 3/6 for 10/100 Ethernet, over all four pairs for Gigabit Ethernet Power provided over data pairs: 1/2 Return and 3/6 + (max 0.8A) 7/8 Return and 4/5 + (max 0.8A)
Approvals	
Safety	IS 13252, IEC/EN/UL 62368-1, CCC
EMC	EN 55032 Class B, EN 55035, EN 61000-3-2, EN 61000-3-3, EN 61000-6-1, EN 61000-6-2, FCC Part 15 Subpart B Class B, RCM AS/NZS CISPR 32 Class B, VCCI Class B, EN 50121-4, IEC 62236-4
Environment	IEC 60068-2-1, IEC 60068-2-2, IEC 60068-2-6, IEC 60068-2-14, IEC 60068-2-27, IEC 60068-2-78

General	
Casing	Plastic Color: black
Sustainability	PVC free Halogen free
Mounting	Wall mount Shelf mount DIN rail
Display and indicators	Power LED, PoE LED
Operating conditions	90 W: -20 °C to 40 °C (-4 °F to 104 °F) 60 W: -20 °C to 60 °C (-4 °F to 140 °F) 30 W: -20 °C to 65 °C (-4 °F to 149 °F) Humidity 10–90% RH (non-condensing)
Storage conditions	-20 °C to 70 °C (-4 °F to 158 °F) Humidity 5–90% RH (non-condensing)
Power consumption	No remote device connected: max 0.2 W 15 W remote device connected: max 18.5 W 30 W remote device connected: max 34.1 W 60 W remote device connected: max 64.3 W 90 W remote device connected: max 91.7 W
Dimensions	166 x 80 x 44 mm (6.54 x 3.15 x 1.73 in)
Weight	500 g (1.1 lb)
Box content	Midspan, Installation guide
Required accessories	AXIS TU6011 Mains Cable
Optional accessories	AXIS T91A03 DIN Rail Clip A
Warranty	Axis 3-year warranty, see axis.com/warranty



Revision	v.01	Revision date	2023-09-18
Paper size	A4	Release date	2023-09-18
Created by	MS	Scale	1:3

© 2023 Axis Communications

AXIS COMMUNICATIONS
www.axis.com
AXIS TU8004 90 W Midspan