

# AXIS Camera Station S1216 Rack Recording Server

## Flexible and scalable recording server

Featuring powerful components, AXIS S1216 Rack offers high performance and support for powerful applications and features. This secure, scalable recording server includes AXIS Camera Station licenses and several empty hard drive bays for flexible storage configurations. It uses a Trusted Platform Module (FIPS 140-2 level 2 certified) to encrypt both the operating system drive and stored video, comes preloaded with pre-configured software and 8 TB of storage. Plus, all supported products are available in one price list for a one-stop-shop experience. Furthermore, it offers services such as Keep Your Hard Drive, Next Business Day Onsite Support, and a 5-year warranty.

- > [Scalable and powerful solution](#)
- > [Secure server with TPM](#)
- > [Includes 8 TB](#)
- > [16 AXIS Camera Station licenses included](#)
- > [Extensive support and 5-year warranty](#)



# AXIS Camera Station S1216 Rack Recording Server

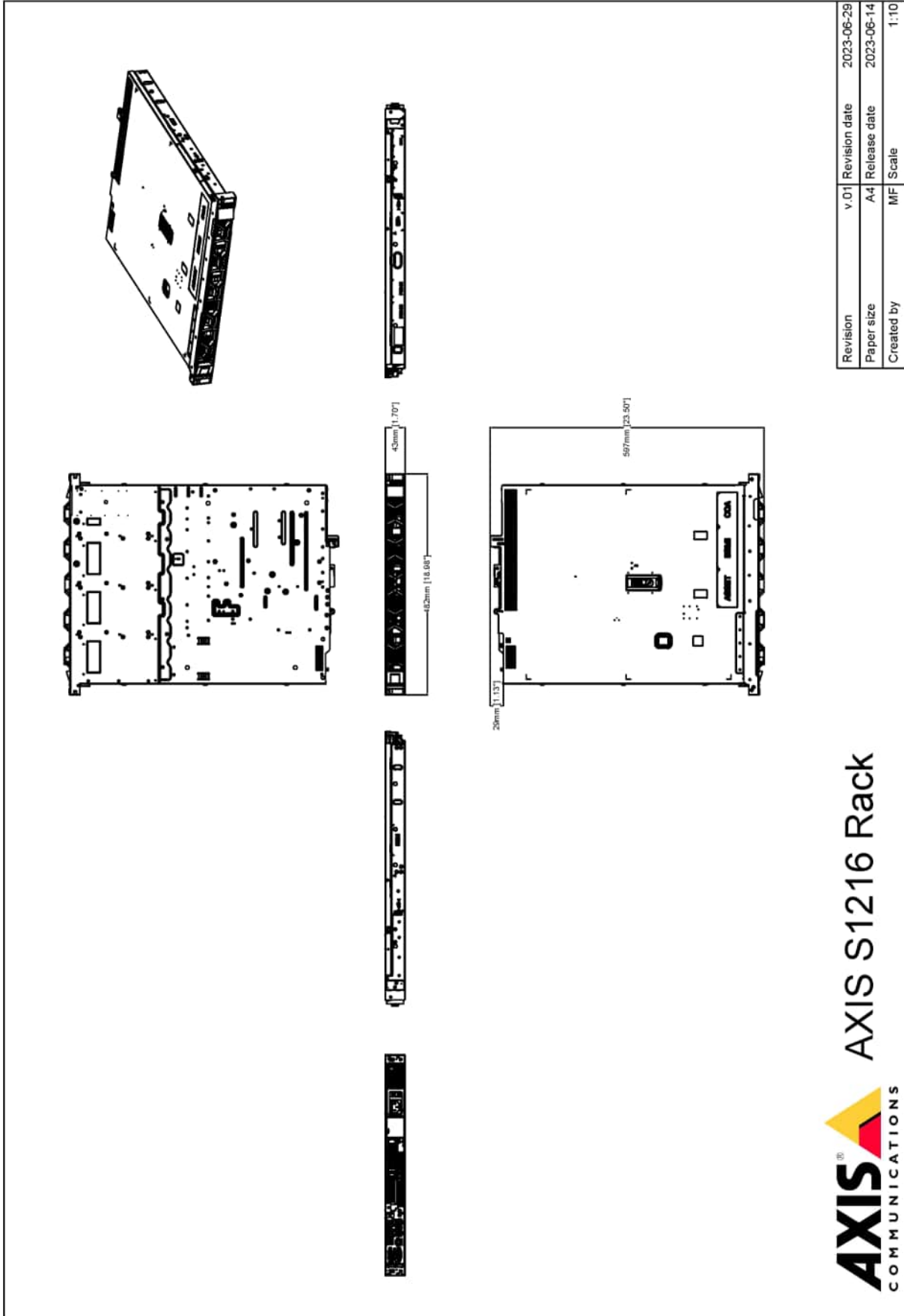
<b>Licenses</b>	16 AXIS Camera Station core licenses included and tied to the hardware. Can be upgraded with additional licenses (sold separately).	Operating system drive: 240 GB SSD
<b>System scalability</b>	Qualified for 64 doors and 32 video channels with a total recording bitrate up to 256 Mbit/s which corresponds to 4 MP, 30 fps per channel in a retail scenario. Check AXIS Site Designer for storage estimates. Tested with: 20 live view clients 2 clients performing heavy playback or scrubbing operations	<b>Remote server management</b> iDRAC 9 basic license
<b>Hardware</b>		<b>Security</b> Support for encrypted operating system drive and recording drive FIPS 140-2 level 2 certified Trusted Platform Module (TPM 2.0)
<b>Processor</b>	Intel® Xeon® E processor	<b>Operating conditions</b> 10 °C to 35 °C (50 °F to 95 °F) Humidity 8–80% RH (non-condensing)
<b>Memory</b>	16 GB (2 X 8 GB)	<b>Storage conditions</b> -40 °C to 65 °C (-40 °F to 149 °F) Humidity 5–95% RH (non-condensing)
<b>Storage</b>	Cold swappable Enterprise Class SATA HDD, 7200 rpm. Total HDD slots: 4 Free HDD slot: 3 Out-of-the-box storage: 8 TB (1x 8 TB)	<b>Approvals</b> EMC CISPR 32 Class A, EN 55035, EN55024, EN 55032 Class A, EN 61000-3-2, EN 61000-3-3 Australia/New Zealand: RCM AS/NZS CISPR 32 Class A Canada: ICES-3(A)/NMB-3(A) Japan: VCCI Class A Korea: KS C 9835, KS C 9832 Class A USA: FCC Part 15 Subpart B Class A Taiwan: CNS 13438 Safety KC-Mark, IEC/EN 62368-1, NOM-019-SCFI-1998
<b>RAID</b>	Factory RAID level: Not configured Supported RAID levels: 0, 1, 10	<b>Compliance</b> TAA (Trade Agreements Act)
<b>Power</b>	450 W 80+ Platinum (100–240 V AC), 6.5–3.5 A, 50/60 Hz	<b>Dimensions</b> 599 x 482 x 43 mm (23.59 x 19 x 1.7 in), 1U chassis Minimum rail depth <sup>a</sup> : 622 mm (24.49 in) Product installation depth <sup>b</sup> : 563 mm (22.16 in) Square-hole rail adjustability range <sup>c</sup> : 608–879 mm (23.94–34.61 in)
<b>Power consumption</b>	Typical: 90 W (307.1 BTU/h) Maximum: 120 W (409.5 BTU/h)	<b>Weight</b> 9.2 kg(20.3 lb)
<b>Connectors</b>	Front side: 1x USB 2.0 1x iDRAC direct port Rear side: 1x USB 2.0 1x USB 3.2 1x VGA 1x Serial port 1x iDRAC dedicated Ethernet port 2x RJ45 1 Gbps	<b>Included accessories</b> Dell Ready Rails 1U Static Rails, C13 to C14 power cord for rack PDU (Wall plug power cords are not included)
<b>Video</b>		<b>Optional accessories</b> Axis workstations For more accessories, see <a href="http://axis.com">axis.com</a>
<b>Video streaming</b>	Not intended for local viewing of video. Recommended to use Axis workstations.	<b>Services</b> Next Business Day Onsite Support Keep Your Hard Drive
<b>Cybersecurity</b>		<b>Warranty</b> 5-year warranty, see <a href="http://axis.com/warranty">axis.com/warranty</a>
<b>Documentation</b>	<i>AXIS Camera Station Hardening Guide</i> <i>Axis Vulnerability Management Policy</i> <i>Axis Security Development Model</i> To download documents, go to <a href="http://axis.com/support/cybersecurity/resources">axis.com/support/cybersecurity/resources</a> To read more about Axis cybersecurity support, go to <a href="http://axis.com/cybersecurity">axis.com/cybersecurity</a>	<b>Export control</b> This product is subject to export control regulations, and you should always comply with all applicable national and international export or re-export control regulations.
<b>General</b>		
<b>Operating system</b>	Microsoft® Windows® 10 IoT Enterprise LTSC 2021 Built-in operating system recovery: yes	

- Measured from the outside-facing surface of the front rack post until the end of the rail.
- Measured from the outside-facing surface of the front rack post to the back of the product.
- The allowable distance between the outside-facing surface of the front and rear rack posts.

## AXIS Camera Station

For details about AXIS Camera Station features and functions, see the AXIS Camera Station datasheet on [axis.com](http://axis.com)

# Dimension drawing



**AXIS** COMMUNICATIONS  
www.axis.com  
**AXIS S1216 Rack**

