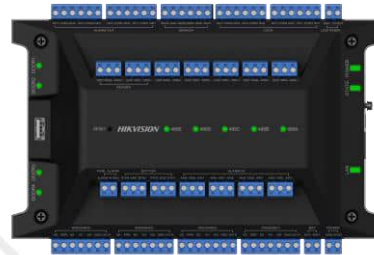


DS-K2704X(P) Access Controller



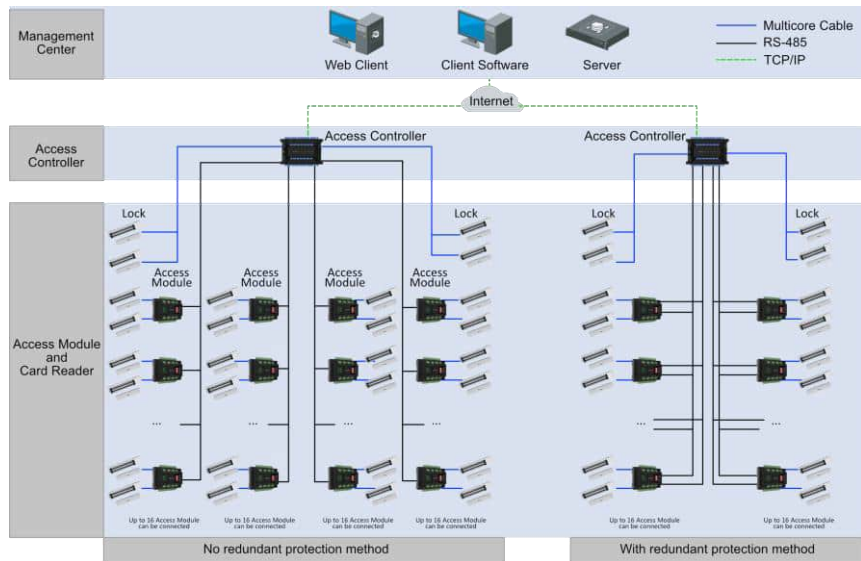
The access controller supports web configuration, which is no need to install software on a PC. By connecting with access modules via RS-485, it can extend to control up to 126 doors, which is suitable for the scenarios of subways, airports, banks, large groups and other industry projects.

- Supports 4 door control. It can extend up to 62 DS-K2M002X access modules, and up to 128 doors can be controlled
- Downstream RS-485 redundancy wiring design to ensure communication stability. 5-ch downlink RS-485 interface supports two applications: 1. When 4-ch RS-485 communication, the 5th RS-485 can be used as a redundant application; 2. 4-ch RS-485 forms 2 groups of dual-bus loops with physical isolation. It is recommended that you do not have more than 16 access modules attached to each loop bus.
- Web configuration management. All configurations can be realized via web without software application
- Supports professional access control applications such as multi-door interlocking and anti-passback
- Supports backup battery access. Charging and discharging are available
- It has status indicators such as power supply, communication and operation, which is convenient for equipment health detection

▪ Specification

| Network | |
|----------------------------------|--|
| Wired network | 1, 10/100/1000 Mbps self-adaptive |
| Interface | |
| Network interface | 1 |
| Lock control | 4 |
| Exit button | 4 |
| Door contact input | 4 |
| Alarm input | 8 |
| Alarm output | 4 |
| TAMPER | 1 |
| RS-485 | 7, 2 for card reader, 5 for access modules (4 for communication, each interface can connect up to 16 access modules; 1 for redundancy) |
| Wiegand | 4, standard 26/34 input, supports custom Wiegand settings |
| USB | 1, USB 2.0 |
| Fire interface | 1 |
| Capacity | |
| User capacity | 100,000 |
| Fingerprint capacity | 10,000 |
| Card capacity | 200,000 |
| Event capacity | 600,000 |
| Linked door capacity | Self: 4 doors Extended: up to 128 doors (connected with 62 access modules) |
| Linked card reader capacity | 8 RS-485 card readers (OSDP protocol) and 4 Wiegand card readers |
| Authentication | |
| Fingerprint recognition duration | < 1 s |
| General | |
| Indicator | 12 indicators, 1 for indicating power status, 1 for running status, 1 for wired network status, 5 for RS-485 status, and 4 for door status |
| Battery | Charge and discharge |
| Power supply | 12 ± 15% VDC |
| Power consumption | ≤ 102 W |
| Working temperature | -10 °C to 55 °C (14 °F to 131 ° F) |
| Working humidity | 0% to 90% (No condensing) |
| Installation | Installation with guide rail |
| Language | English, Thai, Traditional Chinese, Indonesian, Vietnamese, Arabic, Spanish (Europe), Spanish (South America), Italian, French, Dutch, Russian, Ukrainian, Portuguese (Europe), Portuguese (Brazil), Serbian, Croatian, Bulgarian, German, Greek, Romanian |
| Function | |
| Configuration via Web browser | Support |
| Multi-factor authentication | Support |
| First person in | Support |
| Anti-passback | Support 32 routes (64 card readers each) |
| Multi-door interlocking | Support 32 groups (32 doors each) |

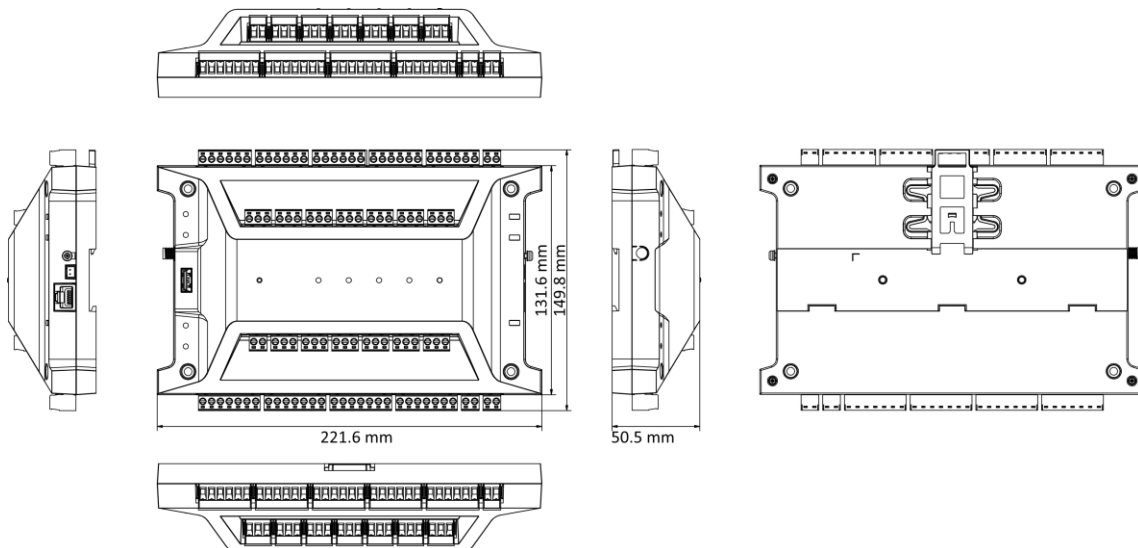
▪ **Typical Application**



▪ **Available Model**

DS-K2704X(P)

▪ **Dimension**



- **Accessory**
- **Optional**

**DS-K2M002X
Module**



Headquarters

No.555 Qianmo Road, Binjiang District,
Hangzhou 310051, China
T +86-571-8807-5998
www.hikvision.com



Follow us on social media to get the latest product and solution information.

