

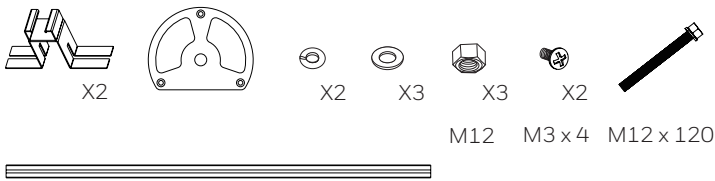
HA60ICMM IN-CEILING MOUNT



The 60 Series HA60ICMM In-ceiling Mount Bracket is compatible with the following Honeywell product:

- HC60WM20R1

The following accessories are provided along with the package:



Features

- Integrated design
- Easy installation

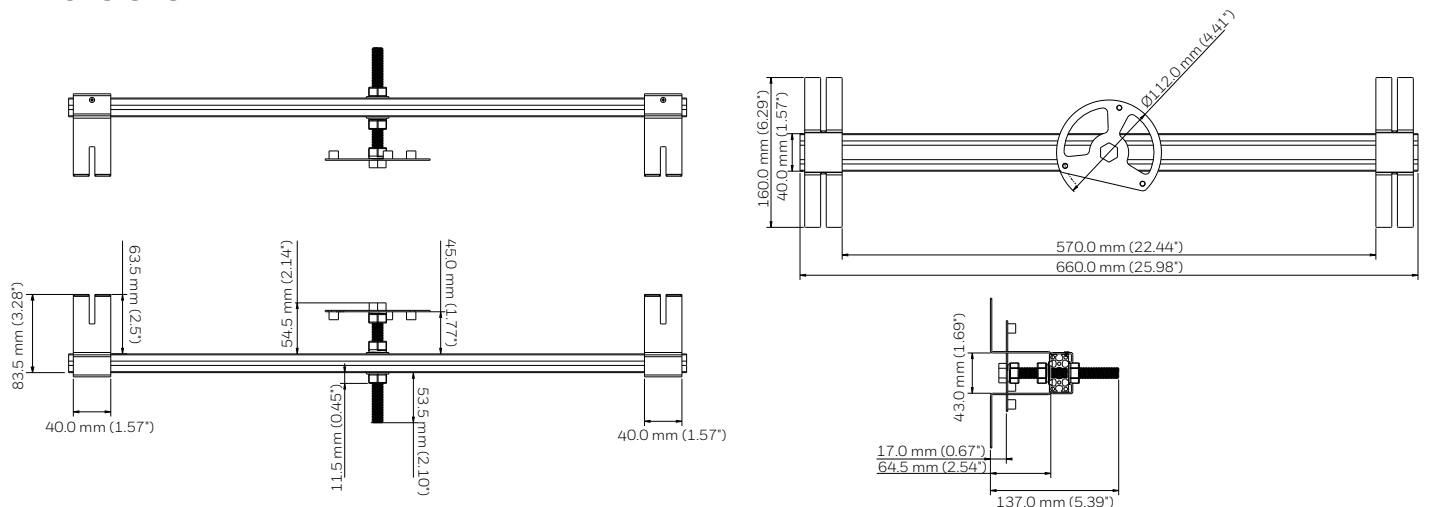
Specifications

GENERAL	
Material	Aluminum
Color	Silver
Dimensions	660.00 mm x 20.00 mm x 40.00 mm (25.98" x 0.79" x 1.57")
Weight	1.13 kg (2.49 lb)

Installation Notes

- The surface must be capable of supporting at least three times (3x) the total weight of the camera and the mount.
- Precautions for waterproof: Install the waterproof joint for camera network cable. Wind the duct tape for the power line.

Dimensions



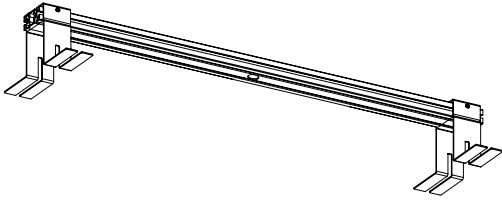
INSTALLATION MATRIX

HA60ICMM + Camera

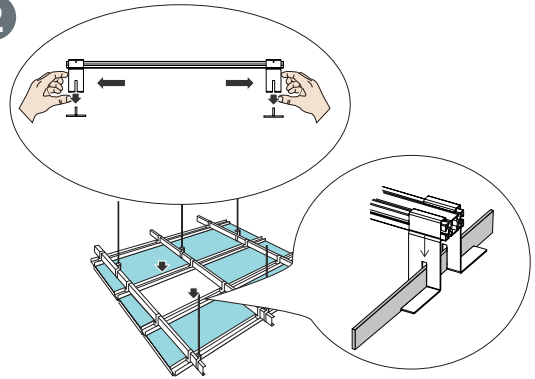
HA60ICMM IN-CEILING MOUNT

Installation

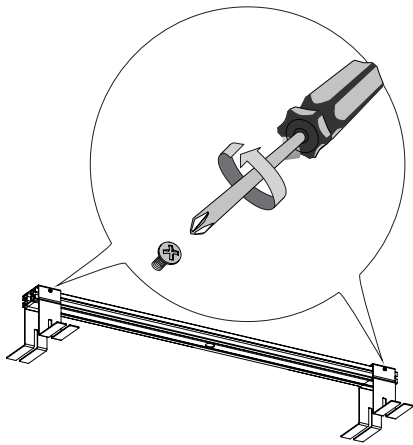
1



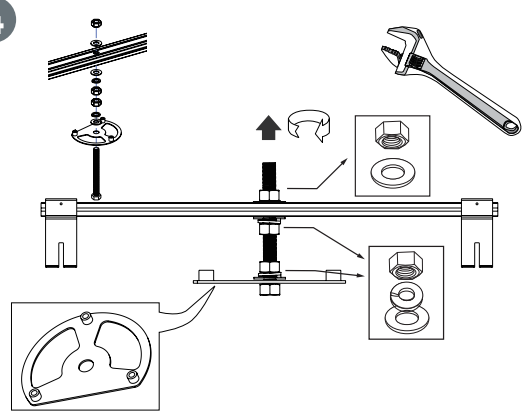
2



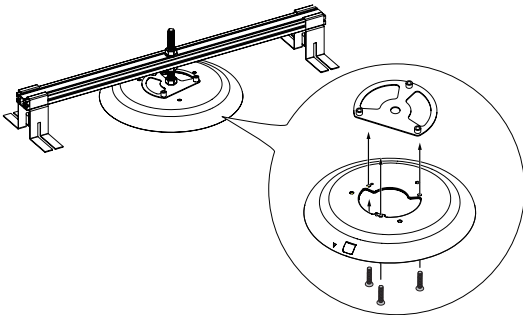
3



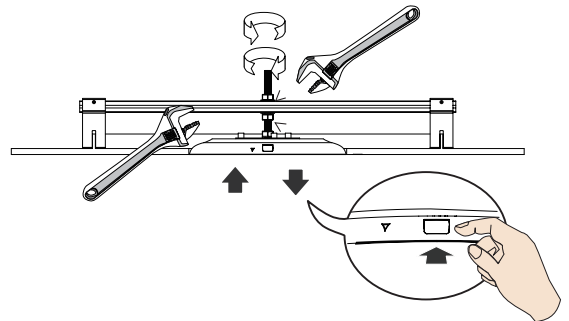
4



5



6



Honeywell

buildings.honeywell.com/security
+1 800 323 4576 (North America only)
Document 800-60IS03-Rev B-07/2023