



AXIS F2108 Standard Sensor

4K indoor compact standard sensor

Ideal for indoor surveillance, this compact standard sensor delivers outstanding 4K image quality and a 110° horizontal field of view. It delivers a high pixel density and images with great details, which is perfect for analytics and to quickly perform forensic analysis. Designed to work with AXIS F Modular Camera Series, it can be combined with up to three other sensor units for maximum flexibility. Compact in design it can easily be integrated into machinery such as ATMs and self-checkouts. Furthermore, when maintenance or upgrade is needed, the cable can be left in place

- > **Compact standard sensor**
- > **Outstanding 4K resolution**
- > **110° horizontal field of view**
- > **Compatible with cables up to 30 m**
- > **For discreet indoor surveillance**



AXIS F2108 Standard Sensor

Camera

Image sensor

1/2.9" progressive scan RGB CMOS
Pixel size 1.4 µm

Lens

4.3 mm, F1.8
Horizontal field of view: 110°
Vertical field of view: 55°
Minimum focus distance: 0.7 m (2.3 ft)
Fixed iris

Shutter speed

Up to 1/7500 s to 1 s¹

Frame rate

Up to 25/30 fps (50/60 Hz)¹

Resolution

Maximum 3840x2160

Image settings

Rotation: 0°, 90°, 180°, 270° including corridor format

Approvals

Product markings

UL/cUL, FCC, ICES, CE, KC, VCCI, RCM, WEEE

Supply chain

TAA compliant

EMC

CISPR 35, CISPR 32 Class A, EN 55035,
EN 55032 Class A, EN 61000-6-1, EN 61000-6-2
Australia/New Zealand: RCM AS/NZS CISPR 32 Class A
Canada: ICES(A)/NMB(A)
Japan: VCCI Class A
Korea: KS C 9835, KS C 9832 Class A
USA: FCC Part 15 Subpart B Class A

Safety

CAN/CSA C22.2 No. 62368-1 ed. 3,
IEC/EN/UL 62368-1 ed. 3

Environment

IEC 60068-2-1, IEC 60068-2-2

General

Casing

Aluminum and plastic casing

Mounting

Integrated wall or ceiling mount. Requires optional mounting accessory.

Power

Typical 0.9 W

Connectors

SMA connector

Operating conditions

Temperature: -20 °C to 50 °C (-4 °F to 122 °F)
Humidity: 10–85% RH (non-condensing)

Storage conditions

Temperature: -40 °C to 65 °C (-40 °F to 149 °F)
Humidity: 5–95% RH (non-condensing)

Dimensions

For the overall product dimensions, see the dimension drawing in this datasheet.

Weight

36 g (0.08 lb)

Box content

Sensor unit, installation guide

Required hardware

AXIS F91 Main Unit
Requires one of the following cables:
AXIS TU6004-E Cable
AXIS TU6005 Plenum Cable
AXIS TU6007-E Cable

Optional accessories

AXIS TU6002 Right-angle SMA Adaptor
AXIS F8212 Trim Ring, AXIS TF8213-E Counter Nut
AXIS TF1902-RE Mounting Bracket
For more accessories, go to axis.com/products/axis-f2108-standard-sensor#compatible-products

1. For main units and sensor units capture mode specifications, see capture mode table.

System tools

AXIS Site Designer, product selector, accessory selector,
lens calculator
Available at axis.com

Warranty

5-year warranty, see axis.com/warranty

Part numbers

Available at axis.com/products/axis-f2108-standard-sensor#part-numbers

Sustainability

Substance control

PVC free, BFR/CFR free in accordance with JEDEC/ECA
Standard JS709
RoHS in accordance with EU RoHS Directive 2011/65/
EU and 2015/863, and standard EN IEC 63000:2018
REACH in accordance with (EC) No 1907/2006. For SCIP
UUID, see echa.europa.eu

Materials

Renewable carbon-based plastic content: 75%
(recycled)
Screened for conflict minerals in accordance with OECD
guidelines
To read more about sustainability at Axis, go to axis.com/about-axis/sustainability

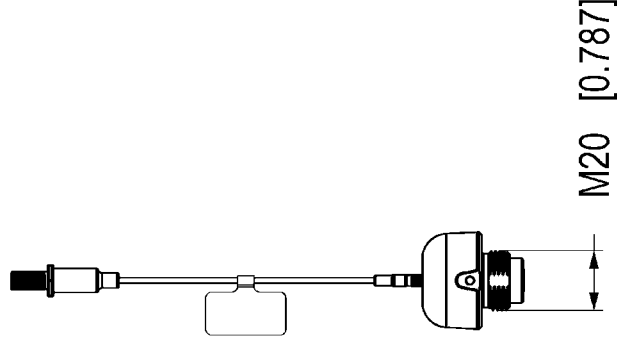
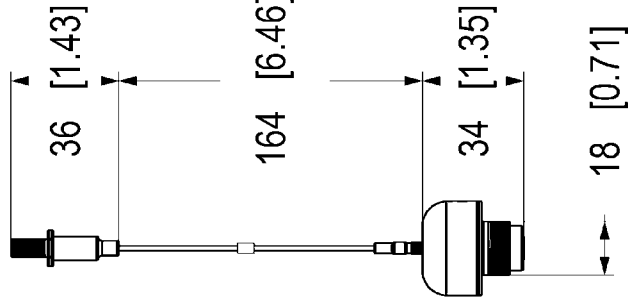
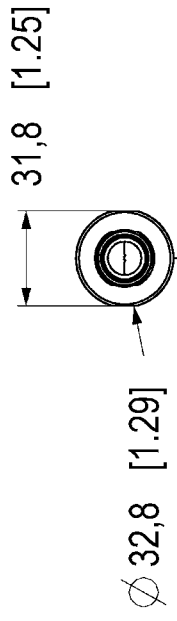
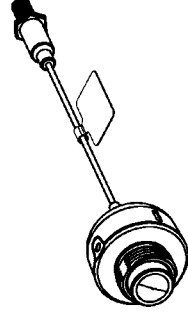
Environmental responsibility

axis.com/environmental-responsibility
Axis Communications is a signatory of the UN Global
Compact, read more at unglobalcompact.org

Capture mode

Capture mode includes frame rate and shutter speed for the sensor unit in combination with different main units.

Main unit	Frame rate (fps) (60/50Hz)	Shutter speed (seconds)
AXIS F9111, AXIS F9111-R Mk II	25/30	1/7500 to 1 s
AXIS F9114	5/5	1/1000 s to 2 s
AXIS F9114-R Mk II	12.5/15	1/7500 s to 1 s



Dimensions in mm [inch]

Date	Version	Scale
2025 Feb-03	M/1.6	1:2
Drawing Number	Size	Sheet
3242998	A4	1(1)

AXIS F2108 Standard Sensor



© 2025 Axis Communications AB. All rights reserved.

