



## AXIS W111 Body Worn Camera

Sleek body worn camera for safer workplaces

This lightweight wearable camera is designed to protect staff for a full workday. It brings the benefits of body worn cameras to sectors like retail, healthcare, transportation, and more by deterring bad behavior and documenting incidents. Wearers and the public feel they're not alone, which contributes to a sense of well-being and a more peaceful workplace. It offers excellent image and audio-in quality for forensic usability, and an indicator light and voice notification when it's activated support transparency and compliance. The system also features signed firmware and video, secure key storage, and true end-to-end encryption to ensure video integrity.

- > **Lightweight and compact (99g, 82 x 55 x19 mm)**
- > **Battery that lasts all day**
- > **Flexible, secure mounting options**
- > **Open standards for easy integration**
- > **End-to-end encryption and strong cybersecurity**



# AXIS W111 Body Worn Camera

## Camera

### Image sensor

1/2.8" progressive scan RGB CMOS  
Sensitivity: 0.1 lux

### Lens

Focal Length: 1.9 mm  
Horizontal field of view: 140° (1080p), 112° (720p)  
Vertical field of view: 91° (1080p), 62° (720p)  
Fixed iris, F2.2

### Shutter speed

1/22,000 s to 1/25 s with 50 Hz  
1/22,000 s to 1/30 s with 60 Hz

## System on chip (SoC)

### Model

S6LM

### Memory

1GB RAM, 512 MB Flash

## Video

### Video compression

H.264 (MPEG-4 Part 10/AVC) High Profile

### Resolution

1920x1080, 1280x720

### Frame rate

25 fps at 50 Hz  
30 fps at 60 Hz

### WDR

WDR

### Image settings

Electronic image stabilization (720p), barrel distortion correction

### Video streaming

Axis Zipstream for body worn

## Audio

### Encoding

AAC-LC

### Input/output

Built-in microphone, built-in speaker

### Functionality

Voice enhancement

## Approvals

### Supply chain

TAA compliant

### EMC

EN 55032 Class B, EN 55035, EN 61000-6-1,  
EN 61000-6-2

Australia/New Zealand: RCM AS/NZS CISPR 32 Class B

Canada: ICES-3(B)/NMB-3(B)

Japan: VCCI Class B

Korea: KS C 9835, KS C 9832 Class B,  
KS X 3124 Class B, KS X 3126

USA: FCC Part 15 Subpart B Class B

### Safety

BSMI-mark, IEC/EN 62368-1 ed. 3,  
RCM AS/NZS 62368.1: 2022

### Environment

IEC 60068-2-1, IEC 60068-2-2, IEC 60068-2-14,  
IEC 60068-2-27, IEC 60068-2-78, IEC/EN 60529 IP54

### Wireless

EN 300328, EN 300440, EN 301893, EN 301489-1,  
EN 301489-17, FCC Part 15 Subpart C, RSS-247

### Cybersecurity

ETSI EN 303 645, BSI IT Security Label, EN 18031-1

## Cybersecurity

### Edge security

**Software:** Signed OS, AES-XTS-Plain64 256bit encryption

**Hardware:** Secure boot, Axis Edge Vault with Axis device ID, signed video, secure keystore (CC EAL6+ certified hardware protection of cryptographic operations and keys). CJIS compliant encrypted internal storage (AES256)

### Network security

IEEE 802.1AR, HTTPS/HSTS<sup>1</sup>, TLS v1.2/v1.3<sup>1</sup>  
WPA/WPA2-PSK

### Documentation

Axis body worn cameras – system security white paper, available at [axis.com/learning/white-papers](https://axis.com/learning/white-papers)

*Axis Vulnerability Management Policy*

*Axis Security Development Model*

AXIS OS Software Bill of Material (SBOM)

To download documents, go to [axis.com/support/cybersecurity/resources](https://axis.com/support/cybersecurity/resources)

To read more about Axis cybersecurity support, go to [axis.com/cybersecurity](https://axis.com/cybersecurity)

## General

### Battery

Li-ion, 2000 mAh

Up to 10 hours operating time in 720p<sup>2</sup>

Up to 8.5 hours operating time in 1080p<sup>2</sup>

Up to 16.5 hours in standby mode<sup>3</sup>

### Storage

64 GB non-volatile memory, up to 23 hours of recorded video

AES256 encryption standard

### Throughput

Camera to system controller: 100 Mbit/s

### Recording

Configurable audio and video prebuffer 0, 15, 30, 60, 90, and 120 seconds

Configurable audio and video postbuffer 0, 10, 30, and 60 seconds

### Sensor

3-axis digital accelerometer and 3-axis digital gyroscope

### User interface

Status indicators

Audio, voice, and vibration feedback

### Wireless interface

Bluetooth® 5.1 Low Energy and Classic

Bluetooth profile: None

Wi-Fi® 5 a/b/g/n/ac @ 2.4 GHz, 5 GHz

### Casing

IEC/EN 60529 IP54-rated

Plastic casing

Drop tested up to 1.5 m

### Color

Black NCS S 9000-N

Gray NCS S 2502-B

### Connectors

Pogo pin pads

### Operating conditions

Temperature: -20 °C to 45 °C (-4 °F to 113 °F)

Maximum temperature (intermittent, <1 hour): 50 °C (122 °F)

Humidity: 10–100% RH (condensing)

### Charging conditions

Temperature: 0 °C to 35 °C (32 °F to 95 °F)

Charging time:

<5.5 hours in 0–5 °C (32–41 °F)

<4 hours in 5–35 °C (41–95 °F)

Humidity: 10–85% RH (non-condensing)

### Storage conditions

Temperature:

≤3 months: -20 °C to 45 °C (-4 °F to 113 °F)

> 3 months: 22 °C to 28 °C (72 °F to 82 °F)

Optimal temperature: 25 °C (77 °F)

Humidity: 5–95% RH (non-condensing)

### Dimensions

For the overall product dimensions, see the dimension drawing in this datasheet.

### Weight

99 g (0.22 lb)

131 g (0.29 lb) with AXIS TW1114 Magnet Mount

### Included accessories

AXIS TW1114 Magnet Mount

1. This product includes software developed by the OpenSSL Project for use in the OpenSSL Toolkit. ([openssl.org](https://www.openssl.org)), and cryptographic software written by Eric Young ([ey@cryptsoft.com](mailto:ey@cryptsoft.com)).

2. With pre-buffer, and fewer than 500 charge cycles.

3. Without pre-buffer, and including 1 hour of recording per charge in 720p, and fewer than 500 charge cycles.

## Optional accessories

AXIS TW1115 Magnet Mount  
Klick Fast™ System for Body worn camera mounts  
AXIS TW1909 Charging Adapter  
AXIS Body Worn Assistant app for Android, iOS  
For more accessories, see [axis.com/bodyworn](https://axis.com/bodyworn)

---

## Warranty

The product, including the battery, is subject to a 3-year warranty period, in accordance with the terms and conditions stated in Axis 5 Year Limited Hardware Warranty available on [axis.com/warranty](https://axis.com/warranty) ("3-year Warranty Period").

In addition to the terms and conditions in the Axis 5 Year Limited Hardware Warranty, the warranty doesn't cover battery degradation if the battery has undergone more than 500 charge cycles, if the camera has been used or stored in temperatures outside the specifications in the datasheet, or if the instructions in the product's user manual haven't been followed. Replacement of the battery during the 3-year Warranty Period carried out by any other party than Axis (or an RMA partner on behalf of Axis) will void the main item's warranty. Contact Axis Support or your reseller for battery- or service-related matters.

---

## Part numbers

Available at [axis.com/products/axis-w111-body-worn-camera#part-numbers](https://axis.com/products/axis-w111-body-worn-camera#part-numbers)

## Sustainability

### Substance control

PVC free, BFR/CFR free in accordance with JEDEC/ECA Standard JS709  
RoHS in accordance with EU RoHS Directive 2011/65/EU/ and EN 63000:2018  
REACH in accordance with (EC) No 1907/2006. For SCIP UUID, see [echa.europa.eu](https://echa.europa.eu)

---

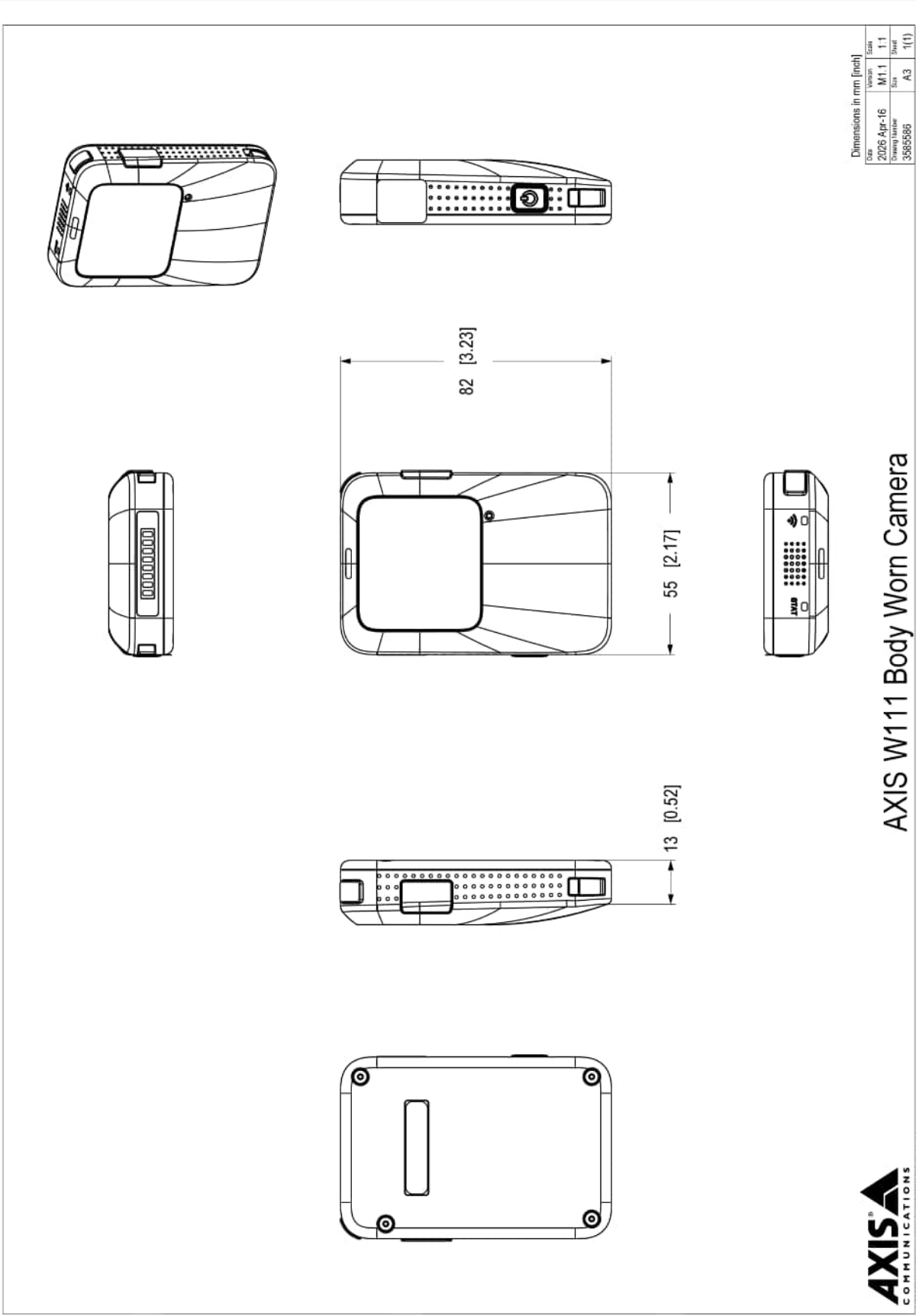
### Materials

Renewable carbon-based plastic content: 70% ((bio-based)  
Screened for conflict minerals in accordance with OECD guidelines  
To read more about sustainability at Axis, go to [axis.com/about-axis/sustainability](https://axis.com/about-axis/sustainability)

---

### Environmental responsibility

[axis.com/environmental-responsibility](https://axis.com/environmental-responsibility)  
Axis Communications is a signatory of the UN Global Compact, read more at [unglobalcompact.org](https://unglobalcompact.org)



Dimensions in mm [inch]

Date	Version	Scale
2026 Apr-16	M1.1	1:1
Drawing Number	Size	Sheet
3865586	A3	1(1)

### AXIS W111 Body Worn Camera



© 2025 Axis Communications AB. All rights reserved.