

## AXIS Q7404 Video Encoder

High-performance, full-featured video encoder with H.264.



- > Superb video quality
- > Multiple H.264 streams per channel
- > Full frame rate in all resolutions
- > Intelligent video capabilities
- > Two-way audio on one channel
- > PTZ support

AXIS Q7404 Video Encoder is a high performance, four-channel standalone solution that integrates four analog cameras at a time into an IP-based video surveillance system. AXIS Q7404 delivers superb video quality and significant savings in bandwidth and storage with H.264.

AXIS Q7404 offers the highly efficient H.264 video compression, which drastically reduces bandwidth and storage requirements without compromising image quality. Motion JPEG is also supported for increased flexibility.

AXIS Q7404 can deliver multiple video streams simultaneously from each video channel at full frame rate in all resolutions up to D1 (720x480 in NTSC, 720x576 in PAL). The video streams can be individually configured with different compression formats, resolutions and frame rates for different needs.

AXIS Q7404 offers intelligent video capabilities such as video motion detection, active tampering alarm and audio detection. Each video channel has two configurable inputs/outputs for connections to external devices such as sensors and relays, which enable the system to receive and respond to alarms. High-quality, two-way audio is provided on one video channel.

All four video channels support pan/tilt/zoom control for PTZ and PTZ dome cameras. It is also possible to control daisy-chained cameras from one RS-485/RS-422 serial port as long as they operate on the same protocol.

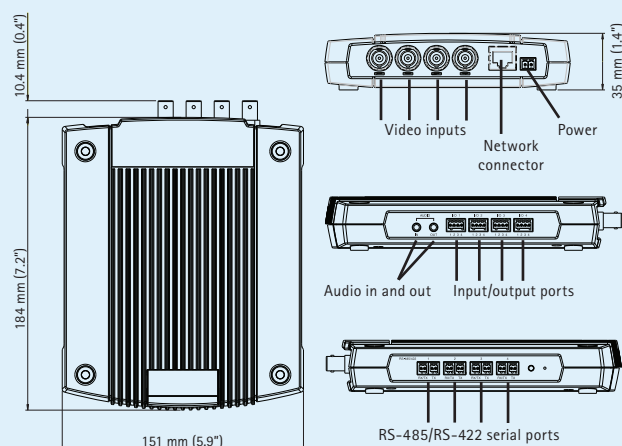


## Technical specifications – AXIS Q7404 Video Encoder

Video encoder		System integration	
<b>Video compression</b>	H.264 (MPEG-4 Part 10/AVC) Motion JPEG	<b>Application Programming Interface</b>	Open API for software integration, including VAPIX® from Axis Communications available at <a href="http://www.axis.com">www.axis.com</a>
<b>Resolutions</b>	NTSC: 720x480 to 176x120 PAL: 720x576 to 176x144	<b>Intelligent video</b>	Video motion detection, active tampering alarm, audio detection
<b>Frame rate H.264</b>	30/25 (NTSC/PAL) fps in all resolutions	<b>Alarm triggers</b>	Intelligent video, external inputs, video loss
<b>Frame rate Motion JPEG</b>	30/25 (NTSC/PAL) fps in all resolutions	<b>Alarm events</b>	File upload via FTP, HTTP and email Notification via email, HTTP and TCP External output activation PTZ presets
<b>Video streaming</b>	Multiple, individually configurable streams per channel in H.264 and/or Motion JPEG: 3 simultaneous streams in max. resolution at 30/25 fps from each channel; more streams if identical or limited in frame rate/resolution Controllable frame rate and bandwidth VBR/CBR H.264	<b>Video buffer</b>	64 MB pre- and post-alarm per channel
<b>Image settings</b>	Compression, color, brightness, contrast Rotation: 90°, 180°, 270° Aspect ratio correction Mirroring of images Text and image overlay Privacy mask Enhanced deinterlace filter	<b>Pan/Tilt/Zoom</b>	Wide range of analog PTZ cameras supported (drivers available for download at <a href="http://www.axis.com">www.axis.com</a> ) 100 presets, guard tour, PTZ control queue Supports Windows compatible joysticks
Audio		General	
<b>Audio streaming</b>	Two way, half-duplex on Channel 1	<b>Casing</b>	Metal casing. Standalone or wall mount
<b>Audio compression</b>	AAC-LC 8 kHz 32 kbit/s, 16 kHz 64 kbit/s G.711 PCM 8 kHz 64 kbit/s G.726 ADPCM 8 kHz 32 or 24 kbit/s	<b>Processor and memory</b>	4x ARTPEC-3, 4x 128 MB RAM, 4x 128 MB Flash
<b>Audio input/output</b>	External microphone input or line input Line level output	<b>Power</b>	8-20 V DC, max. 16.1 W
Network		<b>Connectors</b>	4 analog composite video BNC inputs, NTSC/PAL auto-sensing RJ-45 10BASE-T/100BASE-TX/1000BASE-T DC terminal block: power in 8-20 V DC, max. 16.1 W 4 I/O terminal blocks with 2 configurable inputs/outputs per channel 3.5 mm mic/line in, 3.5 mm line out 4 RS-485/RS-422 serial ports
<b>Security</b>	Password protection, IP address filtering, HTTPS* encryption, IEEE 802.1X* network access control, digest authentication, user access log	<b>Operating conditions</b>	0-45 °C (32-113 °F) Humidity 20-80% RH (non-condensing)
<b>Supported protocols</b>	IPv4/v6, HTTP, HTTPS*, IEEE 802.1X*, QoS layer 3 DiffServ, FTP, SMTP, Bonjour, UPnP, SNMPv1/v2c/v3(MIB-II), DNS, DynDNS, NTP, RTSP, RTP, TCP, UDP, IGMP, RTCP, ICMP, DHCP, ARP, SOCKS	<b>Approvals</b>	EN 55022 Class B, EN 61000-3-2, EN 61000-3-3, EN 55024, EN 61000-6-1, EN 61000-6-2, FCC Part 15 Subpart B Class B, ICES-003 Class B, VCCI Class B, C-tick AS/NZS CISPR 22, EN 60950-1 Power supply PS-P: EN 60950-1, UL, CSA
		<b>Weight</b>	796 g (1.75 lb.)
		<b>Included accessories</b>	Power supply, mounting and connector kits, Installation Guide, CD with installation and management tools, software and User's Manual, 4 Windows decoder user licenses

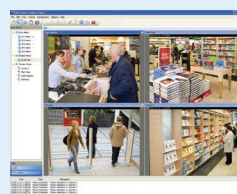
\* This product includes software developed by the OpenSSL Project for use in the OpenSSL Toolkit. ([www.openssl.org](http://www.openssl.org))

### Dimensions



### Optional accessories

AXIS 295 Video Surveillance Joystick



For information on AXIS Camera Station and video management software from Axis' Application Development Partners, see [www.axis.com/products/video/software/](http://www.axis.com/products/video/software/)