

## AXIS Camera Station

Comprehensive video management software for monitoring, recording, playback and event management.



- > Up to 50 cameras
- > Scheduled and event-driven recording
- > Intuitive handling
- > Control of PTZ and dome cameras
- > Site maps
- > Remote viewing and control

AXIS Camera Station is a complete monitoring and recording system for up to 50 cameras. Designed for Axis network video products, this software offers easy installation and setup with automatic camera discovery and powerful Event configuration Wizard, as well as efficient management of cameras in the system.

View and record high quality video and audio from up to 50 cameras with H.264, MPEG-4 and Motion JPEG video compression. Support for H.264 video compression enables optimization of bandwidth and storage efficiency by significantly reducing the bit rate without compromising image quality.

Scheduled and event-driven recordings are triggered by motion or external inputs. AXIS Camera Station utilizes camera based motion detection to save bandwidth and disk space. Manual recording can be triggered directly in the live view interface.

AXIS Camera Station is developed with focus on ease-of-use and intuitive handling offering efficient management of cameras and video in the system.

Powerful recording search with timeline visualization and export functionality. Support for Site Maps makes it possible to render a full overview of the monitored area as well as gain quick access to any Axis network camera in the installation.

Control of PTZ and dome cameras using a joystick or mouse gives responsive and accurate control of the pan, tilt, zoom functionality. Support for digital PTZ is available in both live view and playback.

The Windows client can be installed on any computer, enabling remote viewing and control from anywhere on the corporate network or the Internet.

## Technical specifications – AXIS Camera Station

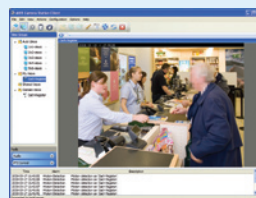
Camera		Triggers & Events	
<b>Models</b>	Compatible with Axis network video products running firmware 4.30 or higher* * Excluding AXIS 206M/206W	<b>Event recording</b>	Events triggered by video motion detection, external inputs, manual trigger or system triggers Increased quality on event recordings
<b>Number of channels</b>	Up to 50	<b>Scheduled recording</b>	Schedule per camera allows customization of weekday and weekend recordings
Video		<b>Motion detection</b>	Advanced camera-based motion detection for low bandwidth utilization
<b>Video compression</b>	H.264 MPEG-4 Part 2 Motion JPEG	<b>Input/output control</b>	Advanced control of cameras' digital inputs/outputs
<b>Resolutions</b>	Supports connected Axis video product resolutions	<b>Alarm notification</b>	Visual indication, audible alert, traybar notification, switch to camera/view, go to PTZ preset, email, alarm procedure, acknowledgement of alarms
<b>Recording frame rate</b>	1500 fps or more on recommended hardware	<b>Logs</b>	Alarm, event and audit logs
Audio		System	
<b>Audio streaming</b>	One-way audio	<b>Minimum system requirements</b>	Windows Vista Business, XP Professional (server and/or client), Windows 2008 Server, 2003 Server (server only) Windows Media Player 11 or later (client only) Always use the latest service packs Microsoft .NET runtime environment (included in installation package)
<b>Audio compression</b>	AAC G.711 G.726	<b>Minimum computer requirements – client</b>	CPU: Intel P4 or higher, 2 GHz (Intel Core 2 Quad recommended for larger systems) RAM: 1 GB (4 GB recommended for larger systems) Screen: 1024x768 Graphics card with full DirectX 9.0 hardware acceleration and onboard video memory of 256 MB or more Important! Use latest graphics card driver
Recording server		<b>Minimum computer requirements – server</b>	CPU: Intel P4 or higher, 2 GHz (Intel Core 2 Quad recommended for larger systems) 1 GB RAM (4 GB recommended for larger systems)
<b>Security</b>	Multiple user access levels with password protection using local or Windows domain users (Active directory)	<b>Recommended network</b>	100 Megabit network (Gigabit network recommended for larger systems)
<b>Installation and setup</b>	Automatic camera discovery Efficient camera management Powerful event configuration wizard	<b>Recommended hard disk configuration</b>	At 30 fps in VGA: up to 15 cameras/hard disk
<b>Recording storage</b>	Unlimited recording database, limited only by disk space Record directly to local and network disks Duration can be limited per camera to conform to local legal requirements Locking of prioritized recordings	General	
<b>Client</b>	AXIS Camera Station Client (for Windows) included for local and remote viewing, playback and administration	<b>Languages</b>	English, French, German, Italian and Spanish* * v. 3.11, English only for v. 3.10
Live view		<b>Licenses</b>	AXIS Camera Station base licenses for 4 or 10 cameras/channels to be used on one single dedicated PC/server Additional licenses in +1, +5 or +20 up to 50 cameras/channels One year support license included in initial base license Future support and upgrades require a yearly support license 30-day demo can be upgraded to licensed version
<b>Camera live view</b>	Flexible live view configuration of up to 50 cameras Support for multiple monitors Hot-spot, camera/view sequence, site maps, web page	<b>License registration</b>	Register automatically over the Internet or manually at www.axis.com within a five day grace period
<b>PTZ support</b>	Control of PTZ and dome cameras using mouse or joystick Area zoom, Digital PTZ Programmable hot-keys	<b>Included accessories</b>	Installation Guide CD with software and User's Manual
Playback		<b>More information is available at <a href="http://www.axis.com">www.axis.com</a></b>	
<b>Search for recordings</b>	Search for recordings based on camera, date and time Timeline visualization, smart search, bookmarks		
<b>Playback</b>	Controllable speed or frame by frame Graphical timeline for quick overview of events		
<b>Synchronized playback</b>	Playback of video and audio synchronized in time from up to 4 cameras simultaneously		
<b>Export</b>	Manual and scheduled export Single images in JPEG format or video sequences in ASF format Digital signature on exported recordings		

### Optional accessories

AXIS 295 Video Surveillance Joystick -  
Easy control of Axis PTZ and  
dome network cameras.



### AXIS Camera Station One – free of charge



Software solution for viewing and  
recording live video from a single Axis  
network camera.