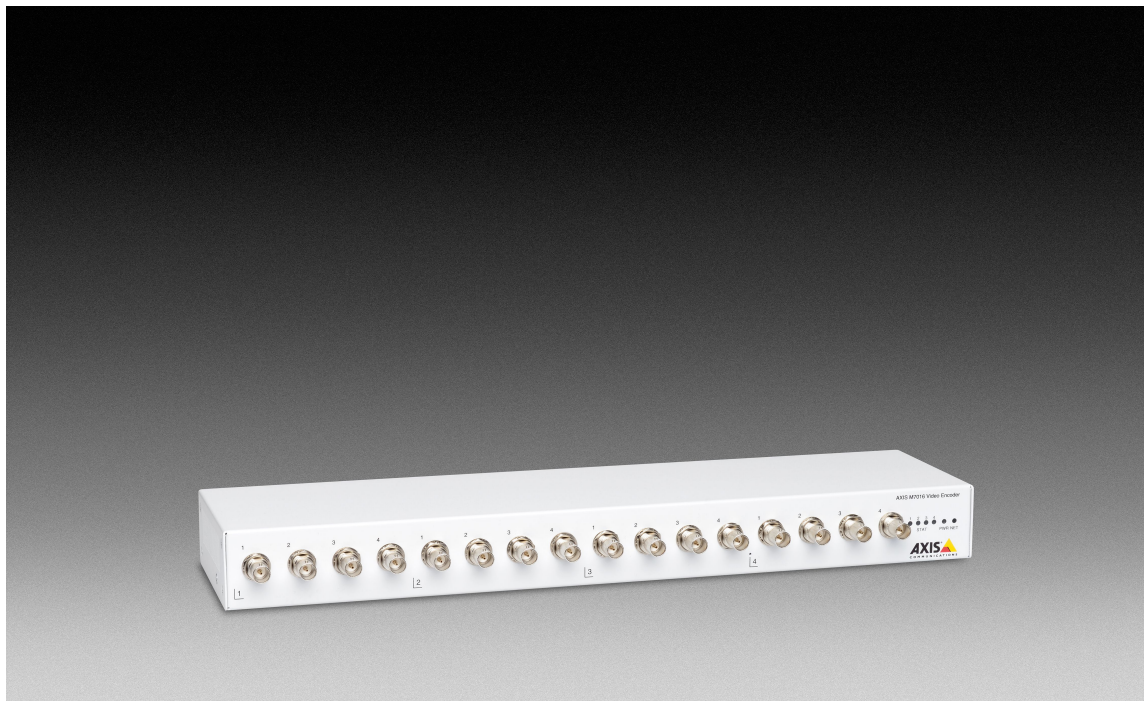


## AXIS M7016 Video Encoder

Cost-effective 16-channel video encoder.



- > Full frame rate
- > Simultaneous H.264 and Motion JPEG streams
- > Edge storage
- > High resolution quad-view

AXIS M7016 Video Encoder offer high quality video, efficient and affordable integration of analog cameras into a powerful IP-based video surveillance system and is ideal for small to medium-sized installations, within retail for example.

AXIS M7016 is a cost-effective and simple way to migrate analog CCTV cameras into a network video system.

AXIS M7016 can be used as a standalone unit or be mounted in a 19" rack. The 16-channel encoder offers one H.264 and one Motion JPEG stream per channel at full frame rate in all resolutions up to D1 (720x480 NTSC or 720x576 PAL). A single Ethernet port serves all 16 channels.

AXIS M7016 offers intelligent video capabilities such as video motion detection and active tampering alarm. The

encoder offers a convenient video management solution with its built-in four memory card slots for edge storage and support for software such as the complimentary AXIS Camera Companion. AXIS M7016 comes with a power supply.

All Axis video encoder products provide pan, tilt and zoom support, enabling control of analog PTZ cameras.



# Technical Specifications – AXIS M7016 Video Encoder

Video	
<b>Video compression</b>	H.264 (MPEG-4 Part 10/AVC) Baseline and Main Profile Motion JPEG
<b>Resolutions</b>	176x120 to 720x576, 176x120 to 1536x1152 for quad view
<b>Frame rate</b>	H.264: 30/25 (NTSC/PAL) fps 15 fps in quad view in full resolution Motion JPEG: 30/25 (NTSC/PAL) fps 15 fps in quad view in full resolution
<b>Video streaming</b>	One individually configured H.264 and one Motion JPEG stream per channel at full frame rate More streams if identical or limited in frame rate/resolution Controllable frame rate and bandwidth, VBR/CBR H.264
<b>Image settings</b>	Compression, Color, Brightness, Contrast, Aspect ratio correction, Mirroring of images, Text and image overlay, Privacy mask, Enhanced deinterlace filter, Video termination, Anti-aliasing, Temporal noise filtering Rotation: 90°, 180°, 270°
<b>Pan/Tilt/Zoom</b>	Wide range of analog PTZ cameras supported (drivers available for download at <a href="http://www.axis.com">www.axis.com</a> ) Support for one PTZ driver in each group of 4 channels 100 presets/camera, Guard tour, PTZ control queue Supports Windows compatible joysticks
Network	
<b>Security</b>	Password protection, IP address filtering, HTTPS <sup>a</sup> encryption, IEEE 802.1X <sup>a</sup> network access control, Digest authentication, User access log
<b>Supported protocols</b>	IPv4/v6, HTTP, HTTPS <sup>a</sup> , IEEE 802.1X <sup>a</sup> , QoS Layer 3 DiffServ, FTP, SMTP, Bonjour, UPnP <sup>m</sup> , SNMPv1/v2c/v3 (MIB-II), DNS, DynDNS, NTP, RTSP, RTP, TCP, UDP, IGMP, RTCP, ICMP, DHCP, ARP, SOCKS
System integration	
<b>Application Programming Interface</b>	Open API for software integration, including VAPIX <sup>®</sup> ; specifications at <a href="http://www.axis.com">www.axis.com</a> AXIS Video Hosting System (AVHS) with One-Click Camera Connection ONVIF Profile S; specification at <a href="http://www.onvif.org">www.onvif.org</a>
<b>Intelligent video</b>	Video motion detection, Active tampering alarm
<b>Event triggers</b>	Intelligent video, Video loss

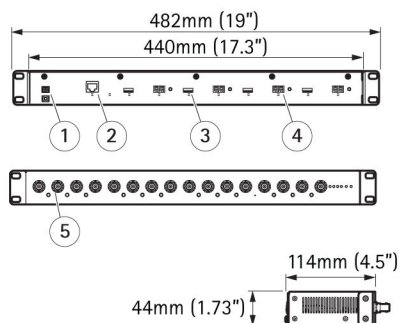
<b>Event actions</b>	File upload: FTP, HTTP, network share and email Notification: email, HTTP and TCP Video recording to edge storage Pre- and post-alarm video buffering PTZ preset
<b>Data streaming</b>	Event data
<b>Built-in installation aids</b>	Pixel counter
General	
<b>Casing</b>	Metal casing, Standalone, rackmount or wallmount
<b>Memory</b>	4x 512 MB RAM, 4x 128 MB Flash
<b>Power</b>	AXIS PS-P power supply 12 V DC, 17 W
<b>Connectors</b>	16 x Analog composite video inputs (BNC) 1 x 1000 Base TX Ethernet on RJ45 4 x Terminal blocks for RS422/RS485 serial communication (full duplex) 1 x DC input terminal block
<b>Edge storage</b>	Four microSD/microSDHC/microSDXC slots supporting memory cards up to 64 GB (cards not included) Support for recording to network share (network-attached storage or file server)
<b>Operating conditions</b>	0 °C to 50 °C (32 °F to 122 °F) Humidity 20–80% RH (non-condensing)
<b>Approvals</b>	EN 55022 Class B, EN 61000-3-2, EN 61000-3-3, EN 55024, EN 61000-6-1, EN 61000-6-2, FCC Part 15 Subpart B Class B, ICES-003 Class B, VCCI Class B, C-tick AS/NZS CISPR 22 Class B, KCC KN22 Class B, KN24, IEC/EN/UL 60950-1
<b>Weight</b>	1850 g (4.1 lb)
<b>Included accessories</b>	Power supply, Mounting and connector kits (incl. 2 mount brackets and 4 rubber feet), Installation Guide, Installation and Management Software CD, Windows decoder user licenses
<b>Video management software</b>	AXIS Camera Station and video management software from Axis' Application Development Partners (not included). For more information, see <a href="http://www.axis.com/products/video/software">www.axis.com/products/video/software</a>
<b>Warranty</b>	Axis 1-year warranty and AXIS Extended Warranty option, see <a href="http://www.axis.com/warranty">www.axis.com/warranty</a>

a. This product includes software developed by the OpenSSL Project for use in the OpenSSL Toolkit (<http://www.openssl.org/>), and cryptographic software written by Eric Young ([eyay@cryptsoft.com](mailto:eyay@cryptsoft.com)).

More information is available at [www.axis.com](http://www.axis.com)

## Dimensions

1. Power
2. Network connector
3. Memory card slots
4. RS422/RS485 serial ports
5. Video inputs



## Optional accessories

1. AXIS T8310 Video Surveillance Control Board
2. AXIS P7701 Network Video Decoder
3. AXIS T8414 In-Installation Display

