

DS-PRI120 Security Radar

DS-PRI120 security radar, which adopts phased array technology, pulse doppler and low-power FMCW modulation technology for intrusion detection. It supports multi-target positioning, tracing and multiple linked cameras tracking. Through intelligent algorithm analysis, it can filter out false alarms under various circumstances. It can work properly day and night in various environments, such as rain, fog, and so on. It is mainly used in the military base, prison, power station, railway, museum, airport and other security places.



Key Features

- Max. 4 trigger lines and 16 zones
- Selectable frequency band
- Links up to 4 separate-mounted speed domes for auto target-tracking
- Multiple radars can link to 1 speed dome
- Up to 4 targets can be tracked by 4 speed domes respectively
- Function of radar-speed dome linkage: mandatory switch of speed dome tracking target ,speed dome parking action, and field of view display for each speed dome
- Capable to detect ultra-slow movements, squatting movements or creeping
- Displays the distance, direction, and position of the detected object on the client software
- Selectable applications including open mode, shrub mode, and custom mode (with adjustable sensitivity)
- 24/7 all-weather working properly
- Exception alarm: communication failure alarm, anti-moving alarm and tampering alarm

Available model

DS-PRI120



Approval

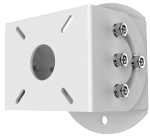
| Class | Standard | Approval |
|--------|-------------------|----------|
| Radars | EN300 440 | √ |
| EMC | EN 50130-4 | √ |
| | EN 55032 | √ |
| | EN 55024 | √ |
| | EN61000-3-2 | √ |
| | EN61000-3-3 | √ |
| RED | ETSI EN 301 489-1 | √ |
| | ETSI EN 301 489-3 | √ |
| | ETSI EN 300 440 | √ |
| | EN 62311 | √ |
| | EN 60950-1 | √ |
| Other | IEC/EN 60529 | IP67 |
| | IEC/EN 62262 | IK09 |
| | ROHS/REACH/WEEE | √ |
| | FCC | √ |
| | CB | √ |
| | RCM | √ |
| | NEMA 4X | √ |

Specifications

| Model | DS-PRI120 | |
|------------------------|--|---|
| Detection | Modulation | Frequency Modulated Continuous Wave |
| | Detection range | Human: 120 m Vehicle: 150 m |
| | Horizontal angle | 120° |
| | Vertical angle | 26° |
| | Range measurement accuracy | ± 1.5 m |
| | Angle measurement accuracy | ± 1° |
| | Velocity range | - 9.8 to + 9.8 m/s |
| | Max. target number | 64 |
| | Frequency | 24.050~24.250 GHz |
| | Transmission power | < 20 dBm (100mW) |
| Alarm input | Zone | 16 |
| | Trigger Line | 4 |
| Alarm output | Relay output NO/NC | 3-channel : Max. 1 A/30 VDC 1-channel : Max. 10 A/28 VDC |
| Application & Protocol | Protocol | Network protocol: HTTP, DNS, NTP, TCP, UDP, DHCP, ARP, SSH Standard ISAPI protocol |
| Electrical & Battery | Consumption | < 8 W |
| | PoE | 802.3at standard PoE |
| | Power supply | 12 VDC |
| Interface & Component | Network interface | 802.3at standard PoE |
| | Power interface | 802.3at standard PoE or 12 VDC |
| | Reset button | 1 |
| | Indicator | 1 dual-color indicator: work status |
| | Tamper switch | 1, front panel tamper-proof |
| Others | Operation temperature | -40 °C to 65 °C (-40 °F to 149 °F) |
| | Operation humidity | 10% to 90% |
| | Dimension (W × H × D) | 206 mm × 228 mm × 61 mm (8.11" × 8.98" × 2.40") |
| | IP level | IP67 |
| | IK level | IK09 |
| | Anti-corrosive level | NEMA 4X |
| | Weight | 1.9 kg (4.2 lb) |
| Material | Front panel: PC+IBS Rear panel: metallic aluminum | |

| | | |
|---------------------|---------------------|---|
| Model | | DS-PR120 |
| | Color | White |
| Installation | Installation | Installation height: 2 m to 3 m (78.7 " to 118.1 ") (Recommended: 2.5 m (98.4 ")) |

Accessories



DS-PRB-1110



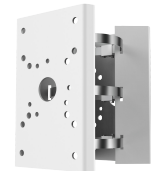
DS-PRB-1120



DS-PRB-1200



DS-PRB-1310



DS-PRB-2200

Distributed by



HIKVISION®

Headquarters

No.555 Qianmo Road, Binjiang District,
Hangzhou 310051, China
T +86-571-8807-5998
overseasbusiness@hikvision.com

Hikvision USA
T +1-909-895-0400
sales.usa@hikvision.com

Hikvision Australia
T +61-2-8599-4233
salesau@hikvision.com

Hikvision India
T +91-22-28469900
sales@pramahikvision.com

Hikvision Canada
T +1-866-200-6690
sales.canada@hikvision.com

Hikvision Thailand
T +662-275-9949
sales.thailand@hikvision.com

Hikvision Europe
T +31-23-5542770
sales.eu@hikvision.com

Hikvision Italy
T +39-0438-6902
info.it@hikvision.com

Hikvision Brazil
T +55 11 3318-0050
Latam.support@hikvision.com

Hikvision Turkey
T +90 [216]521 7070- 7074
sales.tr@hikvision.com

Hikvision Malaysia
T +601-7652-2413
sales.my@hikvision.com

Hikvision UK & Ireland
T +01628-902140
sales.uk@hikvision.com

Hikvision South Africa
Tel: +27 (10) 0351172
sale.africa@hikvision.com

Hikvision France
T +33(0)1-85-330-450
info.fr@hikvision.com

Hikvision Kazakhstan
T +7-727-9730667
nikia.panfilov@hikvision.ru

Hikvision Vietnam
T +84-974270888
sales.vt@hikvision.com

Hikvision UAE
T +971-4-4432090
salesme@hikvision.com

Hikvision Singapore
T +65-6684-4718
sg@hikvision.com

Hikvision Spain
T +34-91-737-16-55
info.es@hikvision.com

Hikvision Tashkent
T +99-87-1238-9438
uzb@hikvision.ru

Hikvision Hong Kong
T +852-2151-1761
info.hk@hikvision.com

Hikvision Russia
T +7-495-669-67-99
saleru@hikvision.com

Hikvision Korea
T +82-(0)31-731-8817
sales.korea@hikvision.com

Hikvision Poland
T +48-22-460-01-50
info.pl@hikvision.com

Hikvision Indonesia
T +62-21-2933759
Sales.Indonesia@hikvision.com

Hikvision Colombia
sales.colombia@hikvision.com