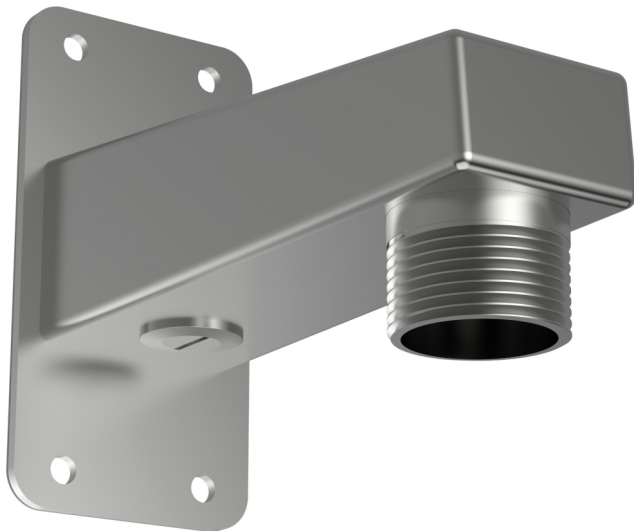


## AXIS T91F61 Wall Mount

Made in marine-grade stainless steel

AXIS T91F61 Wall Mount is specially designed using marine-grade, electropolished and coated stainless steel (SS 316L) material. Thanks to its impact-resistant and proven, outdoor-ready material, the wall mount suits all environments, both indoors and outdoors. The mount offers high corrosion resistance against salt water and chemicals and it is ideal for stainless steel fixed dome cameras.

- > **Marine-grade stainless steel (SS 316L)**
- > **High corrosion resistance against salt water and chemicals**
- > **Indoor and outdoor wall mounting**
- > **Suitable for stainless steel fixed domes cameras**



## AXIS T91F61 Wall Mount

General	
<b>Supported products</b>	Indoor: AXIS T94U01D Pendant Kit (AXIS Q3505-SVE Mk II) Outdoor: AXIS T94U02D Pendant Kit (AXIS Q3505-SVE Mk II)
<b>Casing</b>	Coated electropolished stainless steel (V4A, SAE 316L/UNS S31603/EN 1.4404)
<b>Dimensions</b>	85 x 212 x 165 mm (3 3/8 x 8 3/8 x 6 1/2 in)
<b>Weight</b>	1.2 kg (2.6 lb)
<b>Maximum load</b>	10 kg (22 lb)
<b>Cable routing</b>	Back: Cable hole Bottom: 3/4" conduit hole
<b>Environment</b>	Indoor Outdoor
<b>Approvals</b>	IEC/EN/UL 60950-1 IEC/EN/UL 60950-22
	EN 50581 NEMA 250 Type 4X IEC 62262 IK10+ IEC 60068-2-6 (Sinus) IEC 60068-2-27 (Shock) MIL-STD 810G 509.5 EN-ISO 12944 C4H (coating)
<b>Included accessories</b>	Installation Guide Wall gasket
<b>Optional accessories</b>	AXIS T91F67 Pole Mount For more accessories, see <a href="http://www.axis.com">www.axis.com</a>
<b>Warranty</b>	3-year warranty, see <a href="http://axis.com/warranty">axis.com/warranty</a>

Environmental responsibility:

[axis.com/environmental-responsibility](http://axis.com/environmental-responsibility)