



# When you want to do more with video surveillance

## Product highlights

### Designed for smaller, single-location installations

Supports up to **48 cameras**

Choose from **more than 5,000 cameras** from more than 100 manufacturers

**Single-layer, interactive map** provides a complete overview of the entire system with camera locations

Hide areas in the camera view that must not be visible or recorded with **privacy masks**

Record only when something happens with built-in **video motion detection**

### Add extra functionality for a complete solution

Supports **third-party integrations and Milestone add-on products**

Combine with **XProtect Transact** to create a retail solution where video recordings help grow your bottom line

Use **XProtect Access** to integrate video with your access control system to easily verify visitor details

Browse the **Milestone Solution Finder** to find third-party solutions such as video analytics, facial recognition and perimeter protection

### Access anytime, anywhere

**Three free clients** provides access on-site, off-site and on the go

**XProtect Smart Client** is a powerful interface for daily operations with sophisticated tools for finding and exporting evidence material

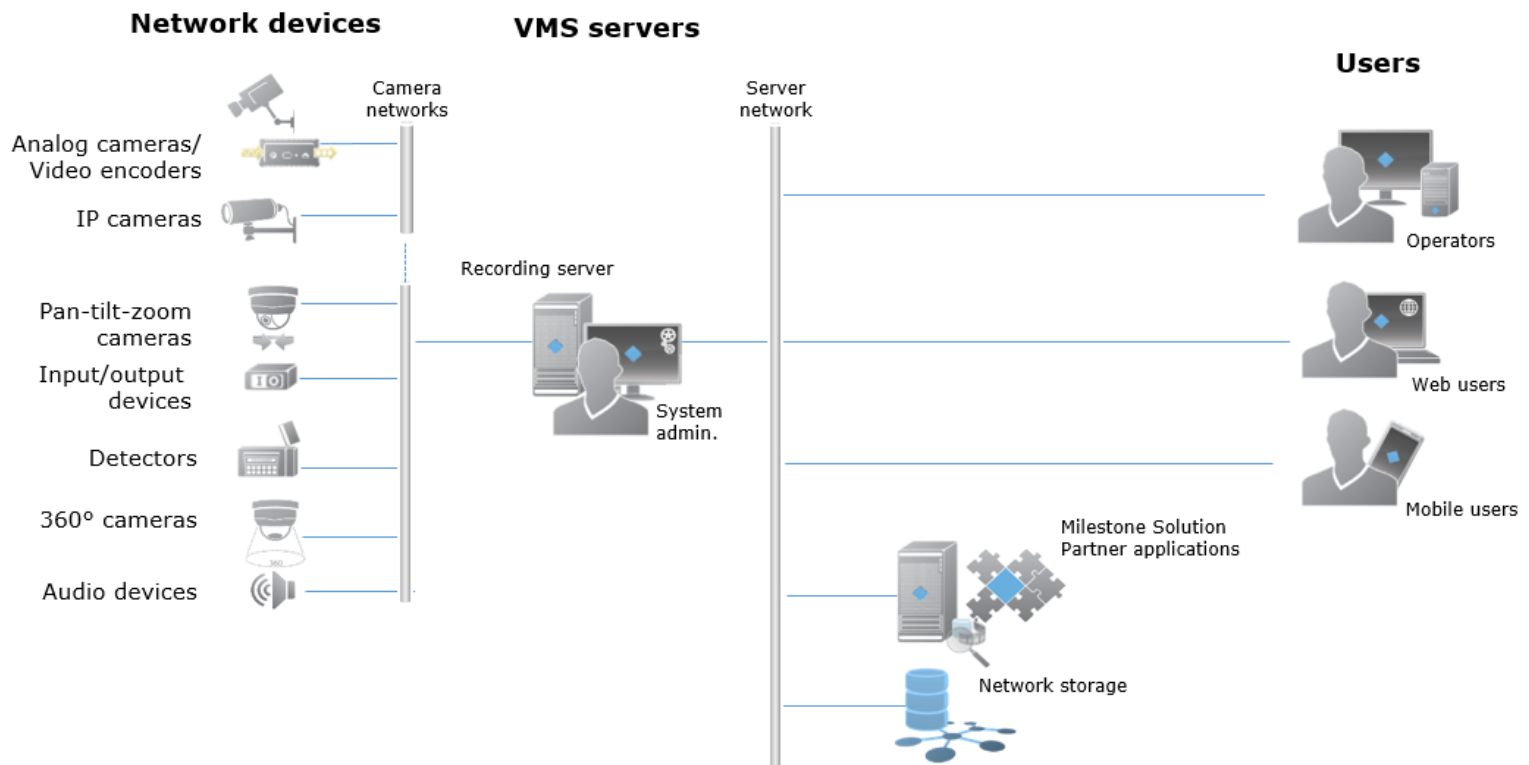
**Milestone Mobile** gives ultimate peace of mind with access to the system from anywhere

With **push notifications** sent directly to your mobile, you always know when something needs your attention

**XProtect Web Client** enables you to connect anywhere through browsers

SKU	Description
XPEXBL	XProtect Express Base License
XPEXCL	XProtect Express Device License
YXPEXCL	1-year Care Plus for device license

## System diagram



A single **Management Application interface** provides a single point of access to Recording Servers, Mobile Server and Event Server. System configuration wizards help add cameras, configure video and recording, adjust motion detection and configure multiple users. The Mobile Server runs as a dedicated service so it can be installed with an existing installation. The Event Server provides a single-layer map giving operators interactive access and control of the complete surveillance system. It hosts features for the alarm function and any third-party solution plug-ins.

## Specifications

General	
Type of deployment	Single server
Licensing	Perpetual
Max number of cameras	48
Max number of recording servers	1
Max number of concurrent users	5
Multiple video export formats	Yes
Supports all XProtect Clients	Yes
Alarm list	Yes
Single-layer map function	Yes
Archiving to network storage	Yes
Third-party application support	Yes
Xprotect Add-Ons support	Yes
Milestone Interconnect	Yes, remote site
Customer Dashboard	Yes, with Care Plus
Alarm Manager	
Ability to assign initial owner of an alarm	Yes
View triggered alarms	Yes
Manage alarms	Yes
Push alarms to users of Milestone Mobile	Yes, with Care Plus
Alarm sound notification	Yes
Alarm logging	Yes
Alarm handling reporting	Yes

Device support	
Support for ONVIF compliant devices	Yes
Support for PSIA compliant devices	Yes
Secure HTTPS camera connectivity	Yes
Number of supported IP camera models	5,136 different models
MJPEG, MPEG-4, MPEG-4 ASP, MxPEG	Yes
H.264 support	Yes
Dual stream per camera	Yes
Two-way audio support	Yes
Two-way audio recording	Yes
Presents positions per camera	Yes
Go-to presets on event	Yes
Set up	
Smart Start plug-and-play	Yes
• Automatic configuration wizard	Yes
• Automatic camera discovery	Yes
• Automatic IP address assignment*	Yes
• Automatic time synchronization*	Yes
• Automatic storage allocation	Yes
System configuration restore points	Yes
Automatic license activation	Yes
Export/Import of configuration data	Yes

\* For supported cameras