

Quick Installation Guide

This guide contains the basic information you need to quickly setup the Camera. For detailed information on installations or operations, please refer to the Hardware Manual and Firmware Manual on ACTi website (www.acti.com).

Step 1: Unpack the Device

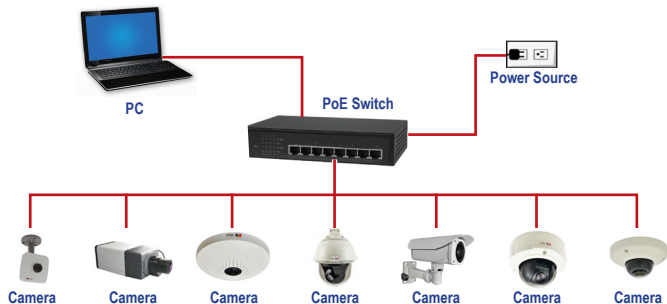
Check the camera package and make sure all items are present. The complete package list is shown on the camera Hardware Manual.

Step 2: Mount the Device

Mounting varies per camera model. Check the most suitable mounting method from the Hardware Manual or from our Mounting Accessory Selector Tool (www.acti.com/mountingselector).

Step 3: Connect the Device

Basic Connection Example



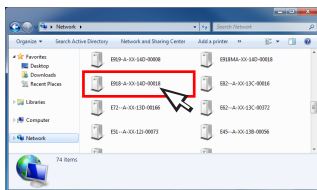
Step 4: Access the Device

On Network with DHCP Server / Router (Automatic IP)

1. Connect the device and the PC within the same network segment. Once connected, an IP address will be assigned to the Camera.
2. Find the Camera via **Windows Explorer** or **IP Utility**.

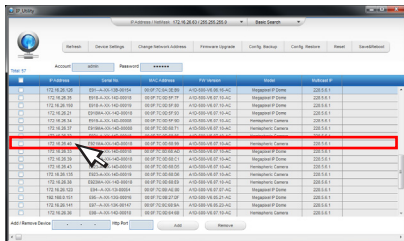
By Windows Explorer

- a. Go to **Start > My Computer > Network**.
- b. Double-click on the device name.



By IP Utility

- a. Download **IP Utility** from our website (www.acti.com).
- b. Run **IP Utility** to start searching for network devices.
- c. Click the IP address of the Camera.



3. The **Web Configurator** appears with the IP address of the Camera on the URL bar. Login to access the Camera.

Note: For full functionality, it is recommended to use Microsoft Internet Explorer®. When using non-IE browsers, free 3rd party software plug-ins may be required. Refer to the device Firmware Manual for more information.

On Network without DHCP Server (Default IP)

1. If necessary, configure the IP settings of your PC to match with the network segment of the Camera.

Camera Defaults

IP Address:
192.168.0.100

Subnet:
255.255.255.0



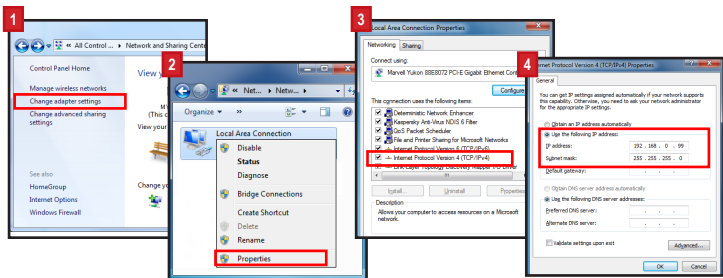
PC can be assigned with

IP Address (*different* from Camera)
Example:
192.168.0.99

Subnet (*same* with Camera):
255.255.255.0

How to configure the PC IP address?

Click **Start > Control Panel > Network and Sharing Center > Change adapter settings**. Then follow the steps below:



2. Open a web browser and type **192.168.0.100** on the URL address bar. The **Web Configurator** appears. Login to access the Camera.

Note: For full functionality, it is recommended to use Microsoft Internet Explorer®. When using non-IE browsers, free 3rd party software plug-ins may be required. Refer to the device Firmware Manual for more information.

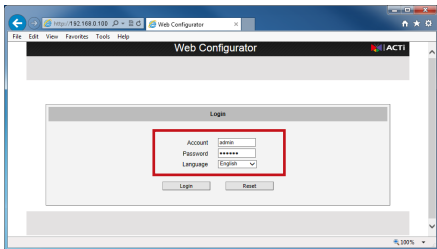
Step 5: Log-in

1. On the Login page, type the **Account** and **Password**.


Default

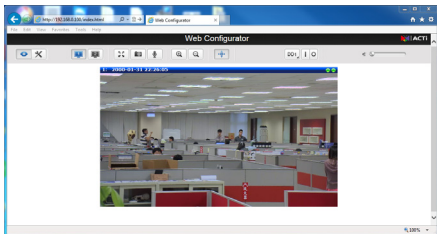
Account: **admin**
Password: **123456**

2. Select **Language**, if necessary.
3. Click **Login**.



The **Live View** screen appears.

4. Click  to access the **Setup** menu to modify the Camera settings.



For more detailed instructions, please refer to the “Firmware Manual” downloadable from the website (www.acti.com).

ACTi Connecting Vision and its logo are registered trademarks of ACTi Corporation.

Microsoft® and Windows® are registered trademarks of Microsoft Corporation.

All other products or company names mentioned in this document are trademarks or registered trademarks of their respective owners.

Copyright © 2014, ACTi Corporation All Rights Reserved