

Quick Start Guide

GV-FR Panel



- **GV-FR Panel V1**
- **GV-FR Panel V2**
- **GV-FR Panel V2-QR**

Thank you for purchasing GV-FR Panel. This guide is designed to assist the new user in getting immediate results from the panel. For advanced information on how to use GV-FR Panel, please refer to GV-FR Panel User's Manual.



© 2024 GeoVision, Inc. All rights reserved.

Under the copyright laws, this manual may not be copied, in whole or in part, without the written consent of GeoVision.

Every effort has been made to ensure that the information in this manual is accurate. GeoVision, Inc. makes no expressed or implied warranty of any kind and assumes no responsibility for errors or omissions. No liability is assumed for incidental or consequential damages arising from the use of the information or products contained herein. Features and specifications are subject to change without notice.

GeoVision, Inc.
9F, No. 246, Sec. 1, Neihu Rd.,
Neihu District, Taipei, Taiwan
Tel: +886-2-8797-8377
Fax: +886-2-8797-8335
<http://www.geovision.com.tw>

Trademarks used in this manual: *GeoVision*, the *GeoVision* logo and *GV* series products are trademarks of GeoVision, Inc. *Windows* is the registered trademark of Microsoft Corporation.

November 2024

Scan the following QR codes for product warranty and technical support policy:



[Warranty]



[Technical Support Policy]

Contents

Recognition and Authentication Considerations	1
Chapter 1 Introduction	3
1.1 Packing List.....	3
1.1.1 GV-FR Panel V1	3
1.1.2 GV-FR Panel V2	4
1.2 Overview.....	5
1.2.1 GV-FR Panel V1	5
1.2.2 GV-FR Panel V2	7
Chapter 2 Installation	9
2.1 Connecting GV-FR Panel.....	9
2.1.1 GV-FR Panel V1	9
2.1.2 GV-FR Panel V2	11
2.2 Standard Installation.....	12
2.2.1 GV-FR Panel V1	12
2.2.2 GV-FR Panel V2	14
Chapter 3 Accessing GV-FR Panel.....	20
3.1 Looking up the IP Address	22
Chapter 4 Advanced Settings	24
4.1 Upgrading System Firmware.....	24
4.2 Restoring to Factory Default	26

Recognition and Authentication Considerations

Face Recognition Distance:

- GV-FR Panel delivers optimal face recognition results when the faces of the targets are within 1 m (3.3 ft) of GV-FR Panel V1, and 2 m (6.6 ft) of GV-FR Panel V2.

Lighting Conditions:

- GV-FR Panel is designed for indoor use only. Avoid exposing it to direct sunlight as it may affect its face recognition performance.

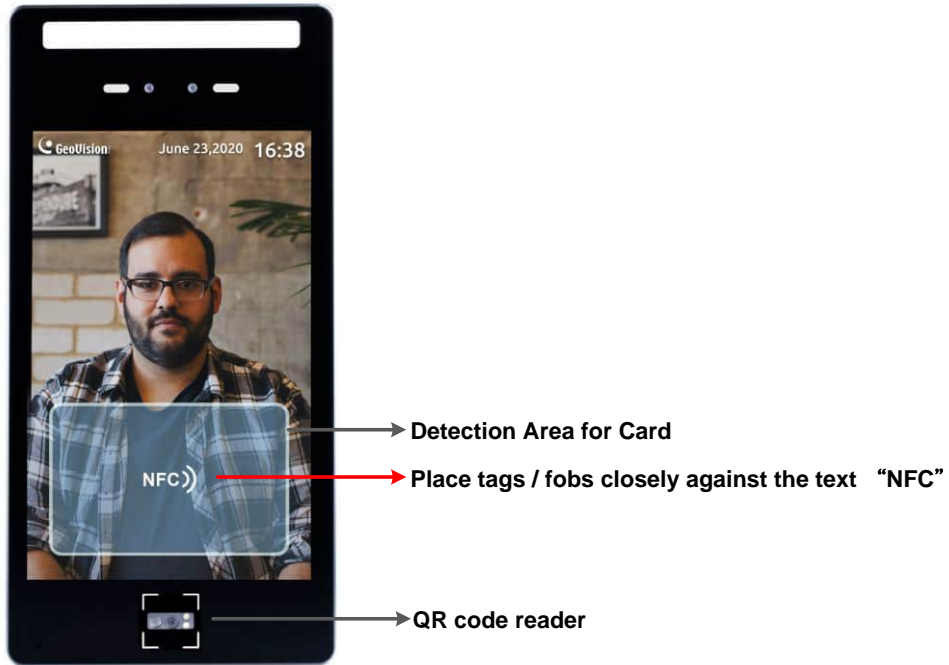
Face Recognition Limitations:

- GV-FR Panel may not be able to recognize faces wearing any type of sunglasses.

Detection Area of Cards, Tags / Fobs, QR Codes:

- When swiping **cards**, place them **closely** against the touch screen for optimal detection effect.
- Only available for GV-FR Panel V1. When swiping **tags / fobs**, place them **closely** against the text “NFC” on the touch screen for optimal detection effect.
- When scanning **QR codes**, keep a distance of 10-15 cm (4-6 in) from the reader for effective scanning.

GV-FR Panel V1:



GV-FR Panel V2:



GV-FR Panel V2-QR:



Chapter 1 Introduction

Welcome to the *GV-FR Panel Quick Start Guide*. In the following sections, you will learn the basic installations and configurations of GV-FR Panel. For details, see the [GV-FR Panel User's Manual](#).

1.1 Packing List

1.1.1 GV-FR Panel V1

<p>1. GV-FR Panel V1</p> 	<p>2. Wall Mount Bracket Kit</p>  <p>For GV-Mount800 For GV-Mount801</p>
<p>3. Wiegand cable</p> 	<p>4. USB Host PH2.0-4P cable</p> 
<p>5. RJ-45 cable</p> 	<p>6. USB OTG PH2.0-4P cable</p> 
<p>7. Power cable</p> 	

1.1.2 GV-FR Panel V2

1. GV-FR Panel V2 or GV-FR Panel V2-QR

GV-FR Panel V2 (includes the data cable attached to the rear panel)



GV-FR Panel V2-QR (includes the data cable attached to the rear panel)



2. Wall Mount Bracket Kit



3. Power Adapter DC 12V 3A



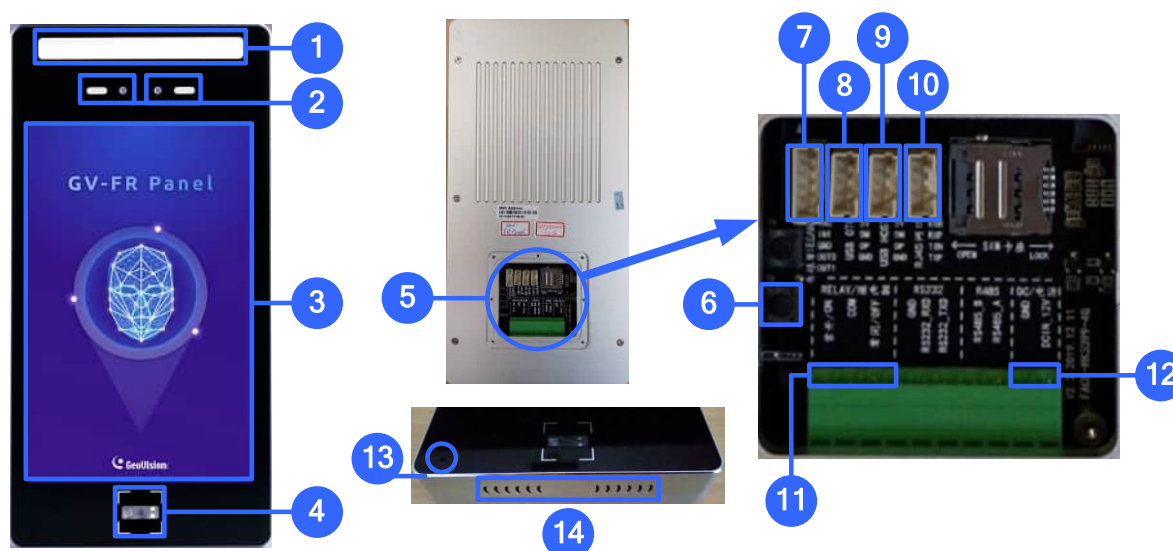
4. Screw Kit



- (a) Short Screw (5 mm / 0.20 in) x 1
- (b) Socket Screw (10 mm / 0.39 in) x 2
- (c) Long Screw (29 mm / 1.14 in) x 3
- (d) Plastic Anchor (29 mm / 1.14 in) x 3
- (e) Allen Wrench x 1

1.2 Overview

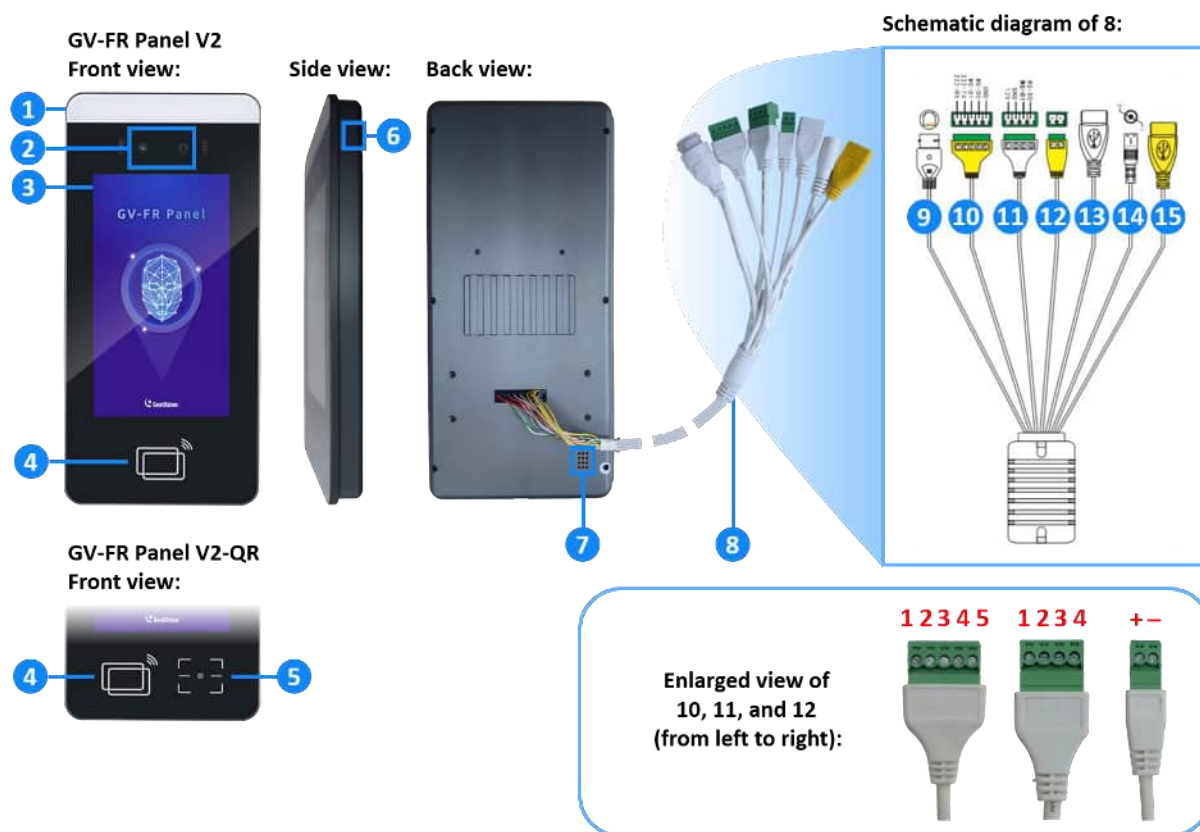
1.2.1 GV-FR Panel V1



No.	Name	Function
1	LED Light	<ul style="list-style-type: none"> White LED: Turns on LED lighting when its radar sensor detects motion. Green LED: Turns on when recognizing registered faces. Red LED: Turns on when detecting unknown faces.
2	Built-in Cameras	Captures real-time live images at the front of the panel.
3	Touchscreen Panel	Displays the live images captured by the built-in cameras and accesses its local settings.
4	QR Code Reader	Reads QR codes used for access control. (The QR code LED turns on when detecting motion around.)
5	Rear Panel	Contains all the ports of the GV-FR Panel V1. (See No. 6 – 10.)
6	Reset Button	Restarts the GV-FR Panel V1.
7	Wiegand Port	Connects to 3 rd -party controllers. (See <i>Chapter 7 Third-Party Controller Integration</i> in the <i>User's Manual</i> .)
8	USB OTG PH2.0-4P Port	Connects to a PC for data backup and/or firmware upgrade via the supplied USB OTG PH2.0-4P cable. (Currently not functional.)
9	USB Host PH2.0-4P Port	Connects to a USB keyboard or mouse via the supplied USB Host PH2.0-4P cable.

10	RJ-45 Port	Connects to the network via the supplied RJ-45 cable.
11	Relay Output	Contains the following 3 relay pins: NO, COM, and NC.
12	2-Pin Power connector	Connects to power via the supplied 2-pin power cable and an optional power adapter.
13	Microphone	Receives audio. (Enabled by default.)
14	Speaker	Sounds when typing the settings on the touchscreen, swiping a card, and scanning the QR code.
Note: The SIM card slot and RS-485 and RS-232 ports are not functional.		

1.2.2 GV-FR Panel V2



No.	Name	Function
1	LED Light	<ul style="list-style-type: none"> Green LED: Turns on when recognizing registered faces. Red LED: Turns on when detecting unknown faces.
2	Built-in Cameras	Captures real-time live images at the front of the panel.
3	Touchscreen Panel	Displays the live images captured by the built-in cameras and accesses its local settings.
4	Card Reader	Reads ID cards or tags.
5	QR Code Reader	Reads QR codes used for access control.
6	Microphone	Receives audio.
7	Speaker	Sounds when playing the audio clip “Please wear a face mask,” when users type the settings on the touchscreen, swipe a card, scan the QR code, and when customer support gives instructions remotely.
8	Data Cable	Contains all the ports of GV-FR Panel V2. (See No. 9 – 15.)
9	RJ-45 Port	Connects to the network using a user-supplied Ethernet cable. (See 2.1 Connecting GV-FR Panel.)

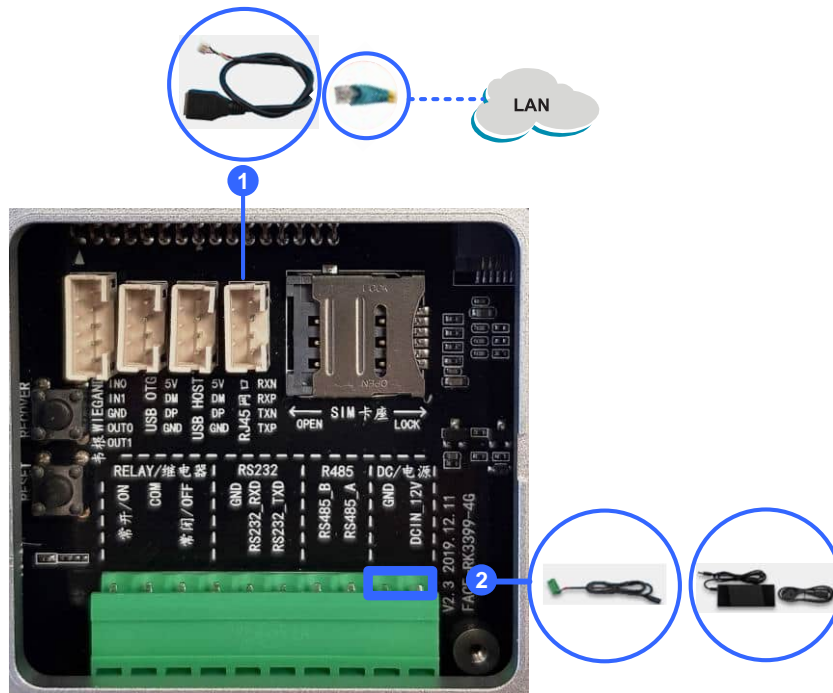
10	Wiegand Output	<p>Connects to 3rd-party controllers. (See <i>Chapter 7 Third-Party Controller Integration</i> in the <i>User's Manual</i>.)</p> <p>Contains the following 5 pins:</p> <ol style="list-style-type: none"> 1. 232-RX (Not functional.) 2. 232-TX (Not functional.) 3. Wiegand Output Data 0 4. Wiegand Output Data 1 5. GND <p>Note: The Wiegand Output pins (Data 0 and Data 1) and the GND pin must be connected when integrating with a third-party controller.</p>
11	Wiegand Input	<p>Contains the following 4 pins:</p> <ol style="list-style-type: none"> 1. 12V (Not functional.) 2. GND (Not functional.) 3. Wiegand Input Data 1 (Not functional.) 4. Wiegand Input Data 0 (Not functional.)
12	Relay Output	<p>Contains the following 2 relay pins: COM (+) and NO (-).</p>
13	USB Host PH2.0-4P Port	<p>Connects to a USB keyboard or mouse.</p>
14	Power Input	<p>Connects to power using the supplied power adapter. (See <i>2.1 Connecting GV-FR Panel</i>.)</p>
15	USB OTG PH2.0-4P Port	<p>Not functional.</p>

Chapter 2 Installation

2.1 Connecting GV-FR Panel

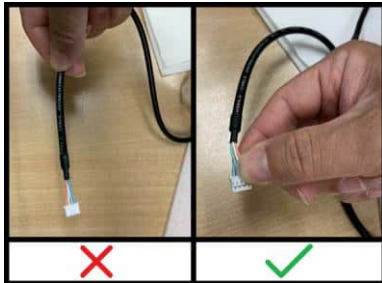
2.1.1 GV-FR Panel V1

To connect GV-FR Panel V1, follow the steps below.



1. Connect the GV-FR Panel V1 to the network using the supplied RJ-45 cable with a user-supplied Ethernet cable.
2. Connect the GV-FR Panel V1 to power using the supplied 2-pin power cable and an optional power adapter.

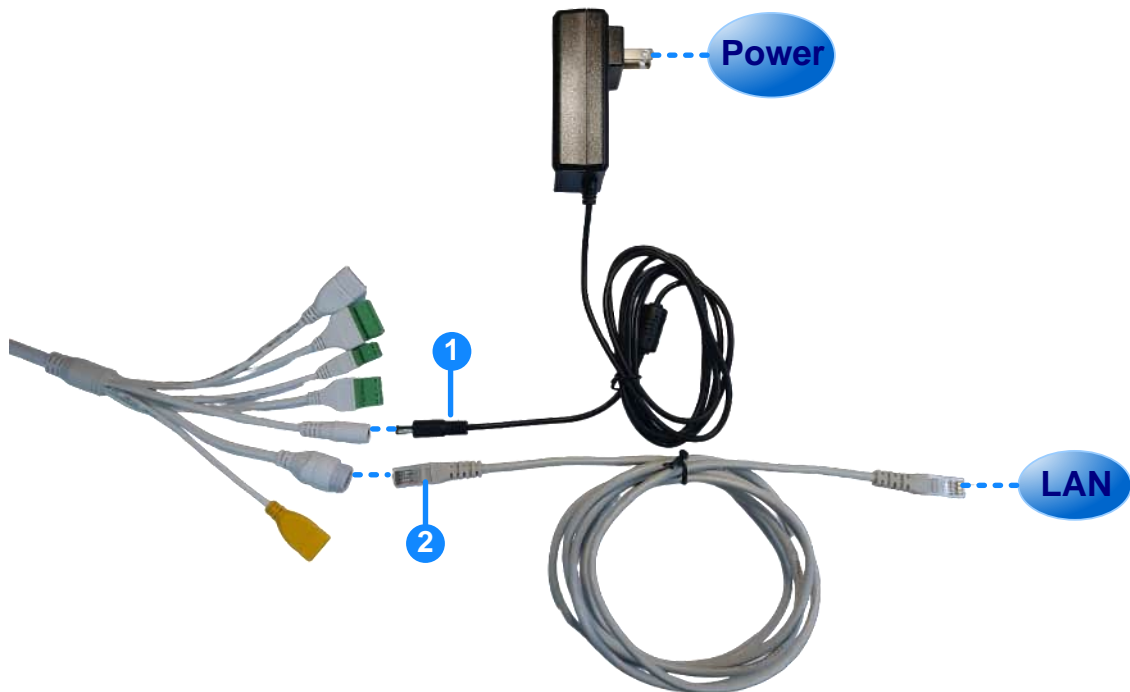
Note: When unplugging a connected cable (No. 3 / 4 / 5 / 6 / 7, 1.2 Packing List) from GV-FR Panel V1 for any reason, grip firmly onto the terminal block and pull out slowly. Do not pull the cable by the cord.



Upon first-time starting GV-FR Panel V1, users are prompted to set the login password for its Administrator account. After the password is set, the live view of the GV-FR Panel V1's built-in camera appears. For details, see *Chapter 3 Accessing GV-FR Panel*.

2.1.2 GV-FR Panel V2

To connect GV-FR Panel V2, follow the steps below.



1. To connect GV-FR Panel V2 to power, connect from the power input of the data cable to power using the supplied power adapter.
2. To connect GV-FR Panel V2 to the network, connect from the RJ-45 port of the data cable to the network using a user-supplied Ethernet cable.

See *1.3 Overview* for details on the data cable.

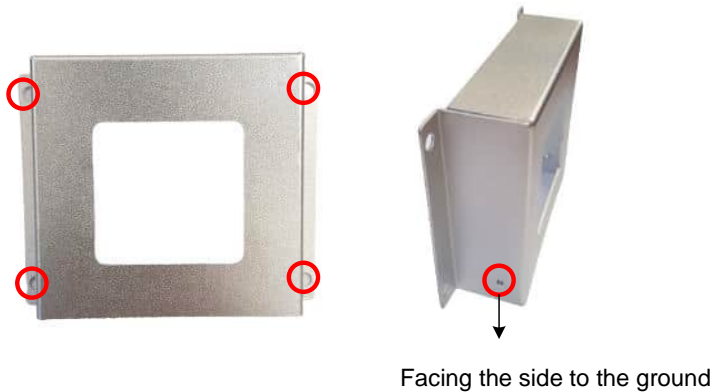
Upon first-time starting GV-FR Panel V2, users are prompted to set the login password for its Administrator account. After the password is set, the live view of the GV-FR Panel V2's built-in camera appears. For details, see *Chapter 3 Accessing GV-FR Panel*.

2.2 Standard Installation

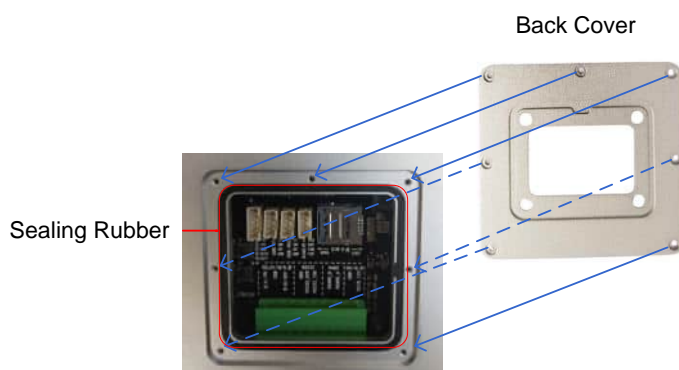
2.2.1 GV-FR Panel V1

For installing GV-FR Panel V1 on a wall, follow the steps below.

1. Place the mounting bracket on the wall and mark the locations of the 4 screw positions as illustrated below.

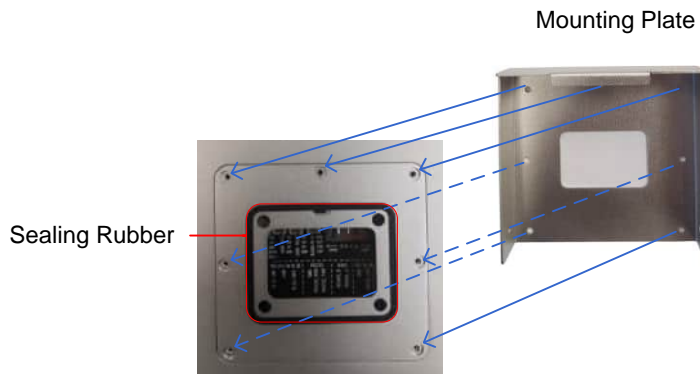


2. At each of the 4 screw positions marked on the wall, drill a hole slightly smaller than the plastic screw anchors provided.
3. Insert the 4 plastic screw anchors into the holes drilled and secure the mounting bracket onto the wall with the screws provided.
4. Secure the large sealing rubber and the back cover onto the back of the GV-FR Panel V1 with the screws provided.

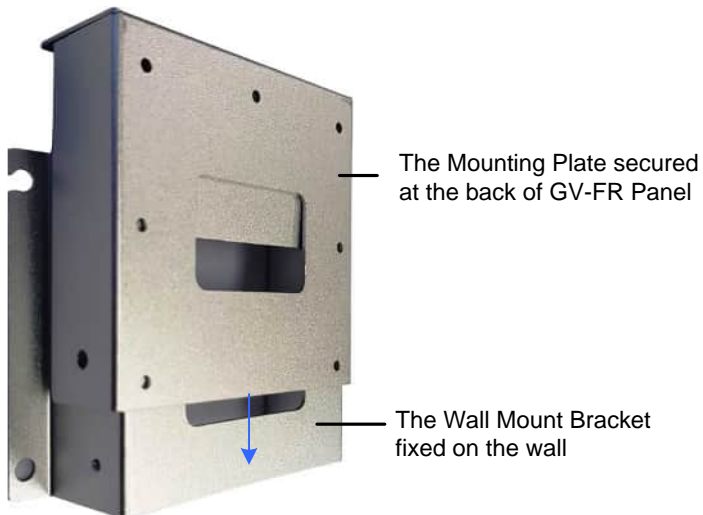


Note: Thread the necessary cables through the back cover and connect them to the panel before securing the cover.

5. Secure the small sealing rubber and the mounting plate onto the GV-FR Panel V1 with the screws provided.



6. Secure the GV-FR Panel V1 onto the wall by attaching its mounting plate onto the wall mount bracket.



7. Insert a screw onto each side of the wall mount to secure and complete the installation.



2.2.2 GV-FR Panel V2

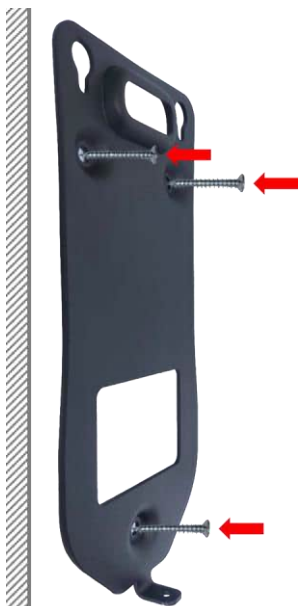
2.2.2.1 Wall Installation

To install GV-FR Panel V2 on a wall, follow the steps below.

1. Place the mounting bracket on the wall and mark the locations of the three screw positions as illustrated below.



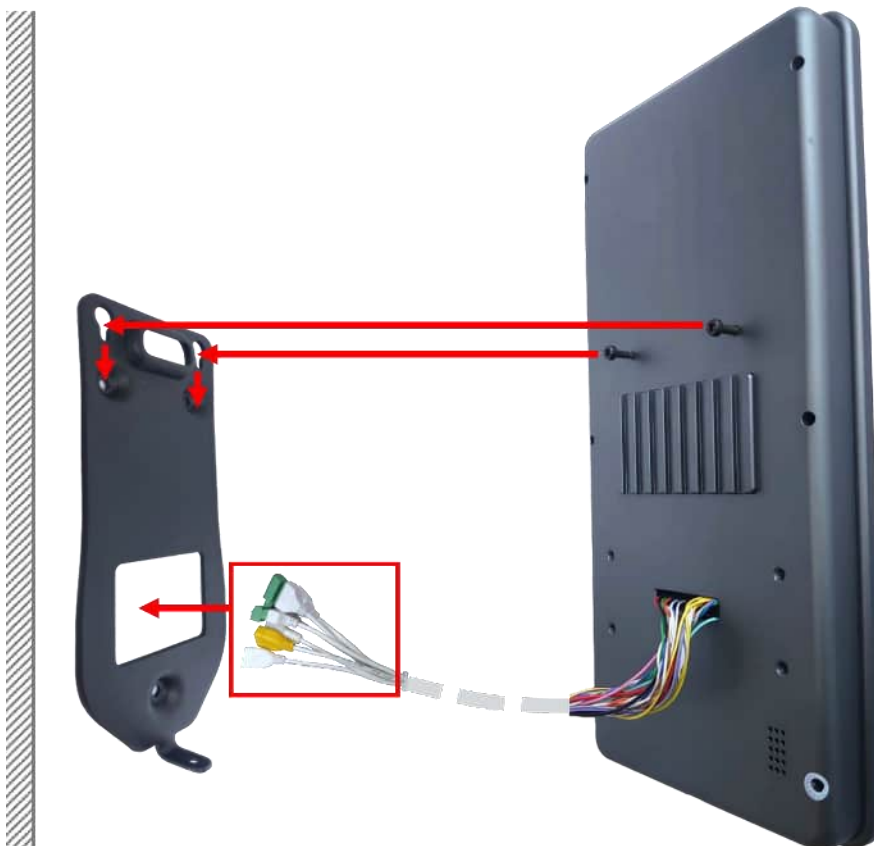
2. At each of the three screw positions marked on the wall, drill a hole using a 6 mm (0.24 in) drill bit. The depth should be 35 to 40 mm (1.38 to 1.57 in).
3. Insert three of the provided plastic anchors into the holes drilled, and then secure the mounting bracket onto the wall with three of the provided 29 mm (1.14 in) screws.



- Secure two of the provided 10 mm (0.39 in) socket screws to the back of GV-FR Panel V2. The provided Allen wrench can be used if needed.



- If a wall hole is drilled to conceal the cables, guide the data cable attached to GV-FR Panel V2 through the square hole in the mounting bracket and into the wall; if not, let it hang down from the panel without passing through the bracket. Align the two socket screws on the panel with the holes at the top of the bracket, allowing the panel to hang securely on the bracket.



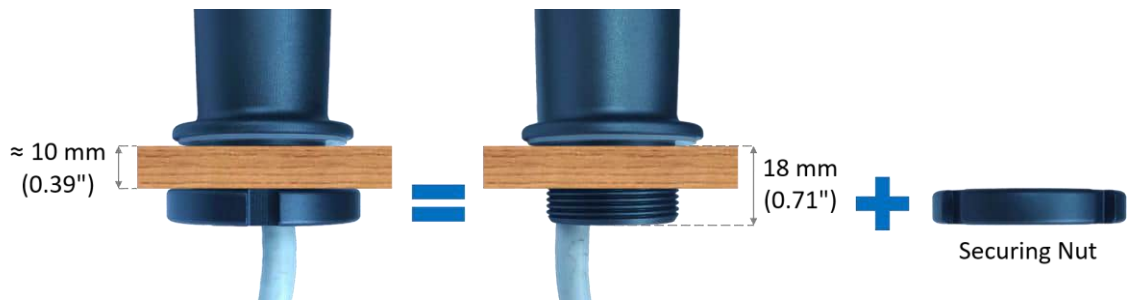
6. To complete the installation, secure the mounting bracket to GV-FR Panel V2 from the bottom using one of the provided 5 mm (0.20 in) screws.



2.2.2.2 Desktop Installation

To install GV-FR Panel V2 with Pillar Stand on a horizontal surface (such as a counter or desk), follow the steps below.

1. Select a suitable horizontal surface no thicker than approximately 10 mm (0.39 in), leaving space for the securing nut along the 18 mm (0.71 in) thread.

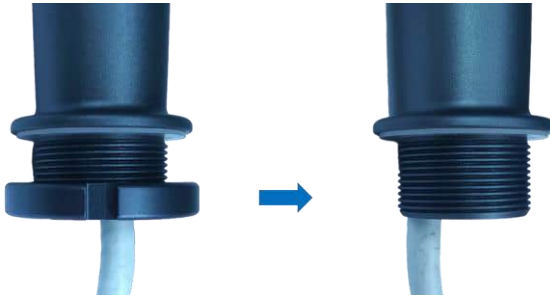


Note: The 10 mm (0.39 in) measurement is an estimate; use your discretion when selecting the surface.

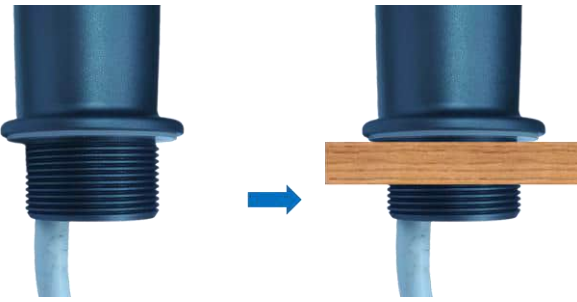
2. Drill a hole in the surface to fit the pillar stand. The hole should be slightly larger than the stand's outer diameter of 33 mm (1.30 in) to allow smooth insertion.



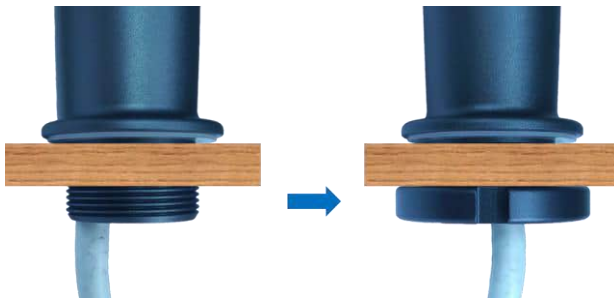
3. Detach the securing nut from the end of the pillar stand. Slide the nut along the length of the cables until it is fully removed.



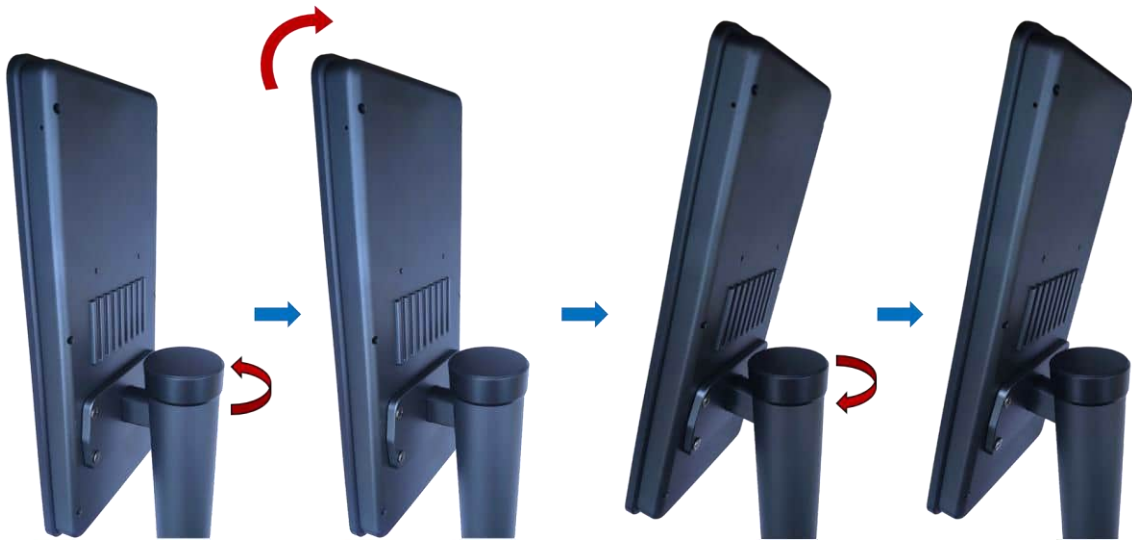
4. Route the cables through the drilled hole, and then insert the pillar stand (already attached to the back of GV-FR Panel V2) through the hole until the stand sits firmly on the surface.



5. On the opposite side of the surface, thread the cables through the securing nut, and then screw the nut onto the end of the pillar stand until the stand is securely mounted.

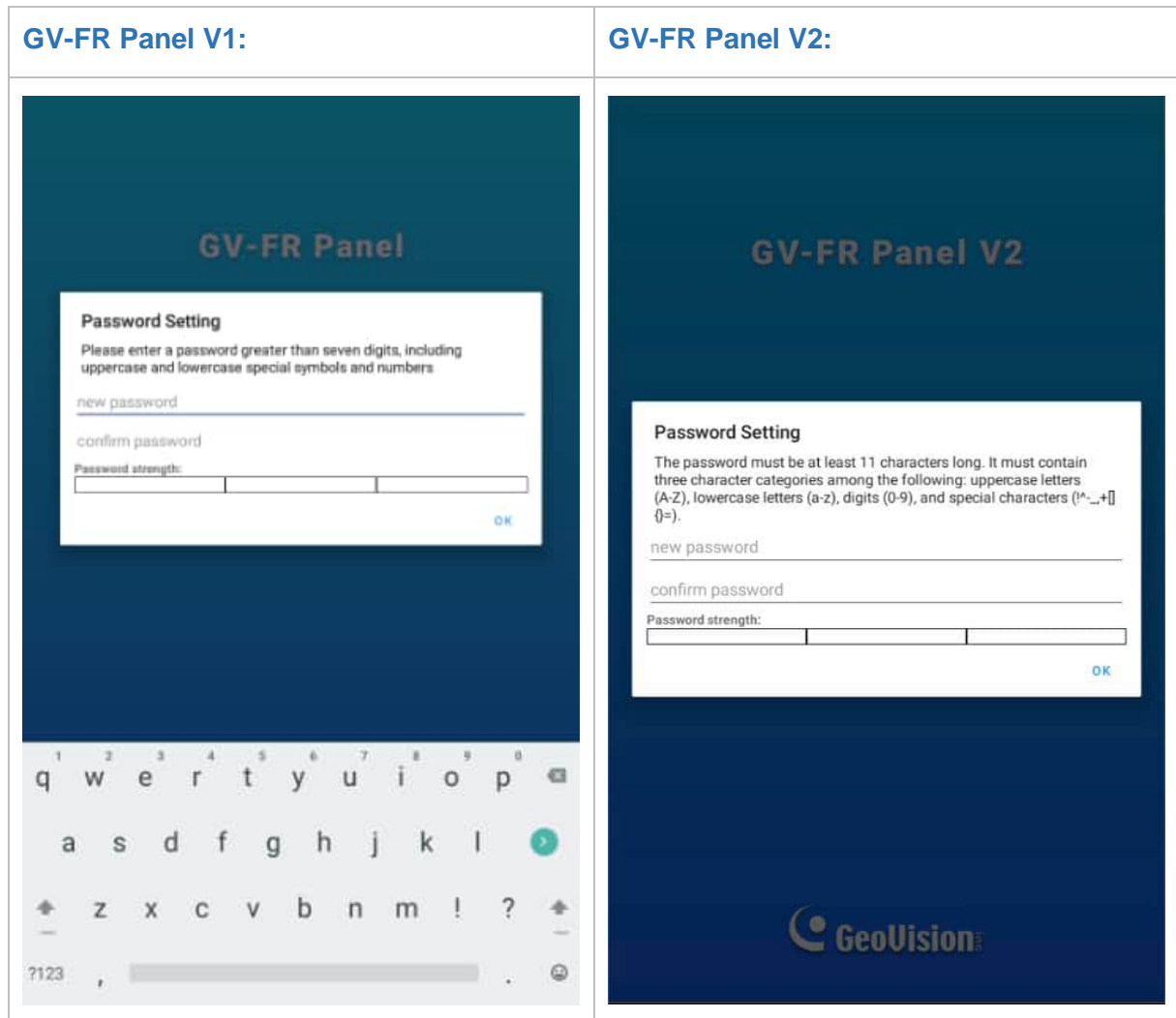


6. Adjust the tilt angle of GV-FR Panel V2 by loosening the cover on top of the pillar stand. Once you have adjusted the angle, re-tighten the cover to lock the tilt angle in place.



Chapter 3 Accessing GV-FR Panel

Upon first-time starting GV-FR Panel, users are prompted to set the login password for its Administrator account. After setting the password, the live view of the GV-FR Panel's built-in camera appears.



After faces are registered in and recognized by the GV-FR Panel, a confirmation screen will be displayed and overlaid on the live image.



There are several methods to register faces:

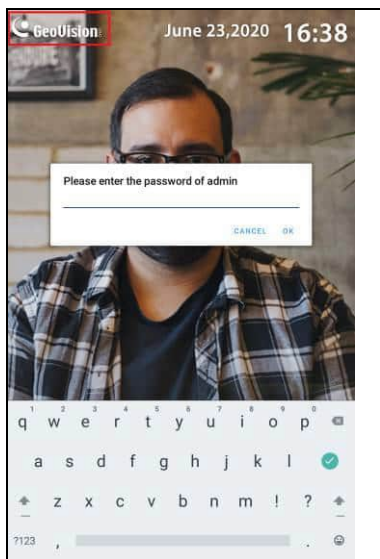
1. **From the Web interface of GV-FR Panel.** See how to find the IP address of GV-FR Panel in *3.1 Looking up the IP Address*, and then select Face Management > Face Profiles on the Web interface. See *5.2 Face Management* in the *User's Manual* for more details on how to create face profiles.
2. **From the GV-ASManager access control system.** See *Chapter 4 User Management on GV-ASManager and GV-FR Panel* in the *User's Manual*.
3. **Using the GV-Face Manager utility.** See *6.3 GV-Face Manager for Face Database Management* in the *User's Manual*.
4. **From the local GV-FR Panel.** See the Local Enroll Mode option, *2.3 Local Settings*.
5. **Using GV-Face mobile app.** See *Chapter 5 Registering Face IDs to GV-AI FR Server / GV-FR Panel* in [GV-Face Mobile App Installation Guide](#).

3.1 Looking up the IP Address

By default, GV-FR Panel is assigned an unused IP address by the DHCP server when it is connected to a network. This IP address remains unchanged unless you unplug or disconnect your reader from the network.

To check the IP address of your GV-FR Panel, follow the steps below.

1. On the main screen of GV-FR Panel, tap the **GeoVision logo** at the upper-left corner of the touchscreen to enter the settings page. You're prompted to type the password of its Administrator account.

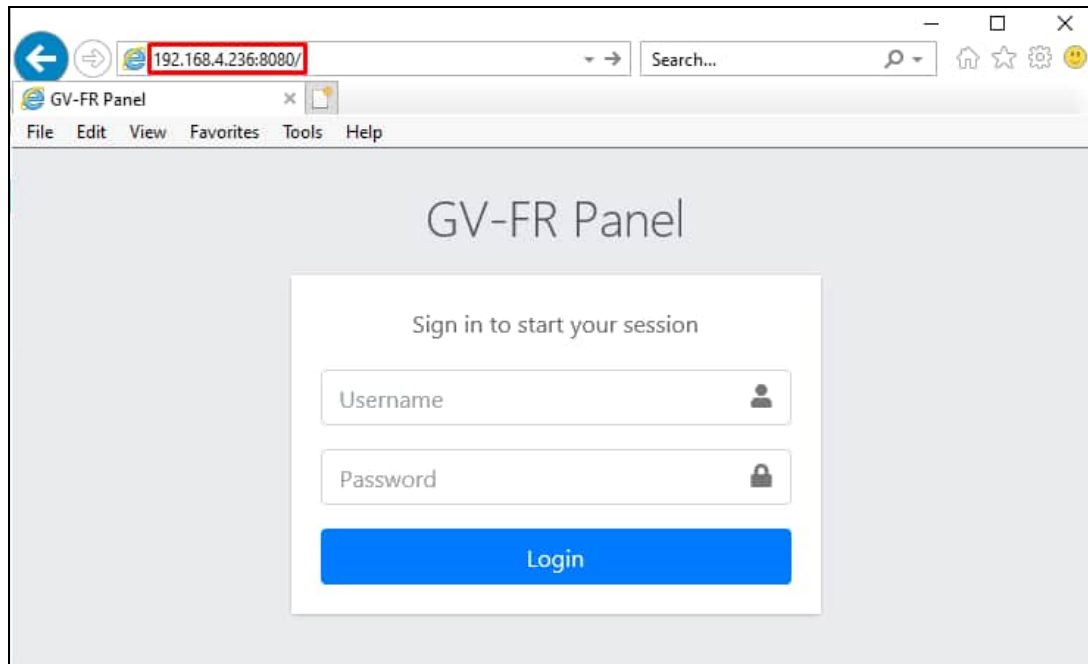


2. On the settings page, find the **IP Address** and **Web Port** of the GV-FR Panel.



Note: If the IP address appears as “0.0.0.0,” this means that the network has not been established. Plug in the Ethernet cable to obtain the IP address. See [2.1 Connecting GV-FR Panel](#).

3. On a PC, open a Web browser and type the IP address and Web port of the GV-FR Panel as exemplified below, e.g. 192.168.4.236:8080. The login page appears.



IMPORTANT: For accessing GV-FR Panel, it is required to add a colon and the port number (default port: 8080) after the IP address, e.g. <http://192.168.4.236:8080>.

4. Type *admin* for the username and type the Administrator password of the GV-FR Panel to log in.

For the detailed settings available on the Web interface of GV-FR Panel, see *Chapter 5 Administrator Mode* in the *User's Manual*.

Note:

1. You can only change the IP address directly on GV-FR Panel. To assign a static IP address to GV-FR Panel, use the local settings on the device. See *2.3 Local Settings* in the *User's Manual*.
 2. You can also use GV-IP Device Utility to search for the IP address of GV-FR Panel. See *4.1 Upgrading System Firmware*.
-

Chapter 4 Advanced Settings

4.1 Upgrading System Firmware

GeoVision periodically updates the latest firmware to the company website. You can update GV-FR Panel's firmware through **GV-IP Device Utility** (V8.9.3 or later) from the [website](#).

Important Notes Before You Start

Before you start updating the firmware, read these important notes:

1. While the firmware is being updated, the power supply must not be interrupted.
2. If you use GV-IP Device Utility for firmware upgrade, the computer used to upgrade firmware must be within the same network as the GV-FR Panel.
3. If firmware upgrade fails, you will need to restore the GV-FR Panel to its default settings. For details, see 4.2 *Restoring to Factory Default Settings*.

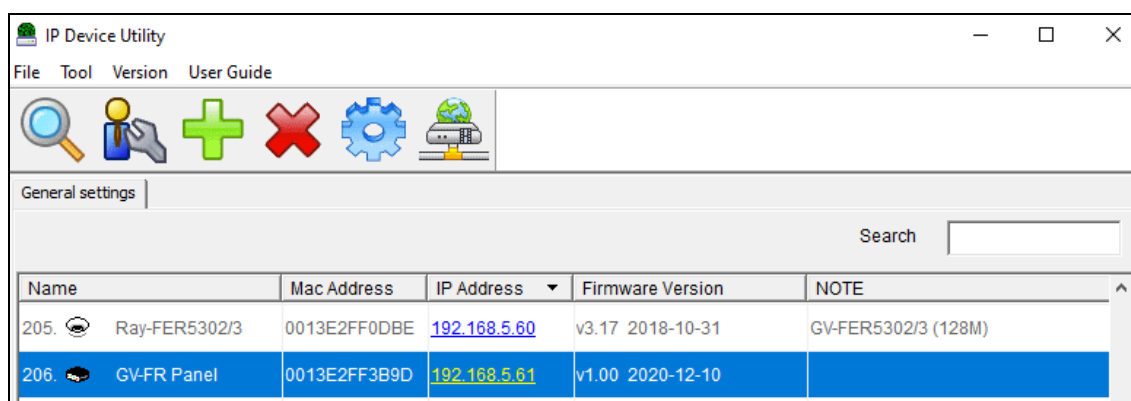
WARNING: The interruption of power supply during updating causes not only update failures but also damages to your GV-FR Panel. In this case, contact your sales representative and send your device back to GeoVision for repair.

Using the GV-IP Device Utility

GV-IP Device Utility provides a direct way to upgrade the firmware to multiple GV-FR Panels.

Note: The computer used to upgrade firmware must be within the same network as the GV-FR Panel.

1. Once downloaded, select **GV IP Device Utility**, and follow the onscreen instructions to install the program.
2. Double-click the **GV IP Device Utility** icon created on your desktop. This dialog box appears.



3. Click the **Search** button to locate available devices on the LAN, or click the **New** button and assign an IP address to locate a GV-FR Panel on the network.
4. Double-click on the IP address of the GV-FR Panel. This dialog box appears.



5. Click the **Browse** button to locate the firmware files (.img) saved at your local computer.
6. If you would like to upgrade all the GV-FR Panels in the list, check **Upgrade all devices**.
7. Type the **Password** of the GV-FR Panel, and click **Upgrade** to start the upgrade.

4.2 Restoring to Factory Default

If for any reason the device is not responding properly, you can restore it to its factory default settings through the Web interface.

Restore it to its factory default settings through the Web interface.

1. Click **General Settings > System Settings**.
2. Click **Load Default**.