



GV-IP Speaker User's Guide

This document describes how to add and control GV-IP Speaker with GV-Control Center. And how to locate the speaker and update its firmware using GV-IP Speaker Setting Kits.

1. Adding to GV-Control Center.....	1
2. Controls in GV-Control Center	3
3. GV-IP Speaker Setting Kits	5

1. Adding to GV-Control Center

The speaker is only compatible with **GV-Control Center V4.2.0** or later.

To search for a host:

To use the auto search function, the speaker must be installed under the same LAN as GV-Control Center.

1. On the Host List, click the **Add** button > **Add Host** > **Search Host**.
2. In the Search Host dialog box, select the discovered speaker.
3. You are prompted to enter ID and Password. By default, the ID is **admin** and the Password is **admin123**. Click **OK**.
4. Click **Add Selected Hosts**. The speaker is added to the Host List.

Note: To change the default ID and Password, you need to install the GV-IP Speaker Setting Kits, and access **Setting** > **ONVIFParam**. See 3. *GV-IP Speaker Setting Kits*.



To manually add a host:

To use this method, you must already know the IP address of the speaker in order to add it to GV-Control Center.

Note: The speaker, by default, has a DHCP-enabled IP address, and no fixed IP address. See 3. *GV-IP Speaker Setting Kits* for discovering its IP address.

1. On the Host List, click the **Add** button > **Add Host** > **Add IP Speaker**.
2. On this dialog box, configure the following settings:

The screenshot shows a dialog box titled "Host Settings - IP Speaker". It contains the following fields and controls:

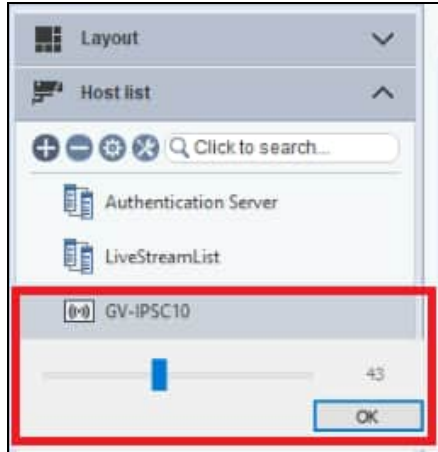
- Host Name:** A text box containing "Host 1".
- Address:** An empty text box.
- ID:** An empty text box with a refresh icon to its right.
- Password:** An empty text box.
- HTTP Port:** A text box containing "554" with a power icon to its right.
- Buttons:** "OK" and "Cancel" buttons at the bottom.

- **Host Name:** Name the speaker.
- **Address:** Type the IP address of the speaker.
- **ID & Password:** Type ID and Password. By default, the ID is **admin** and the Password is **admin123**.
- **HTTP Port:** It is port 554 by default.

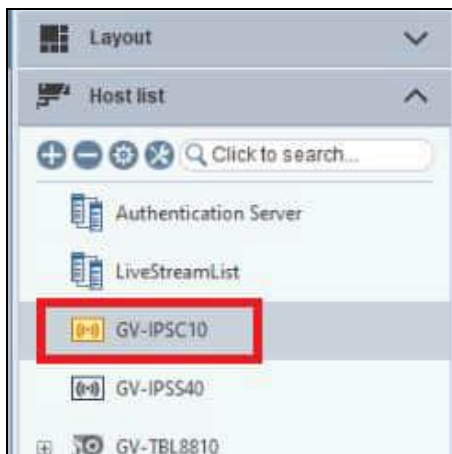


2. Controls in GV-Control Center

- **Volume:** Right-click the speaker icon and select **Volume Setting** to change its volume.



- **Broadcast:** Press and hold the speaker icon. The icon turns orange. The GV-Control Center operator can then talk to the surveillance site through the speaker.




- **Play a WAV file:**
 1. Right-click the speaker icon, select **Play Wave File** and locate a .wav file to play.
 2. When the “Want to Repeat Wave File?” message appears, click **Yes** to play the WAV file continuously.
 3. To stop playing, double-click the speaker icon.



- **Associate the speaker with a camera:**

1. Right-click a camera host, and select **IP Speaker Setting**.
2. On the IP Speaker Setting dialog box, select a speaker under Speaker Device, and click **OK**.



3. Drop the camera to the Live View window.
4. Click the **Microphone** icon  on the camera's live view to talk to the surveillance site.

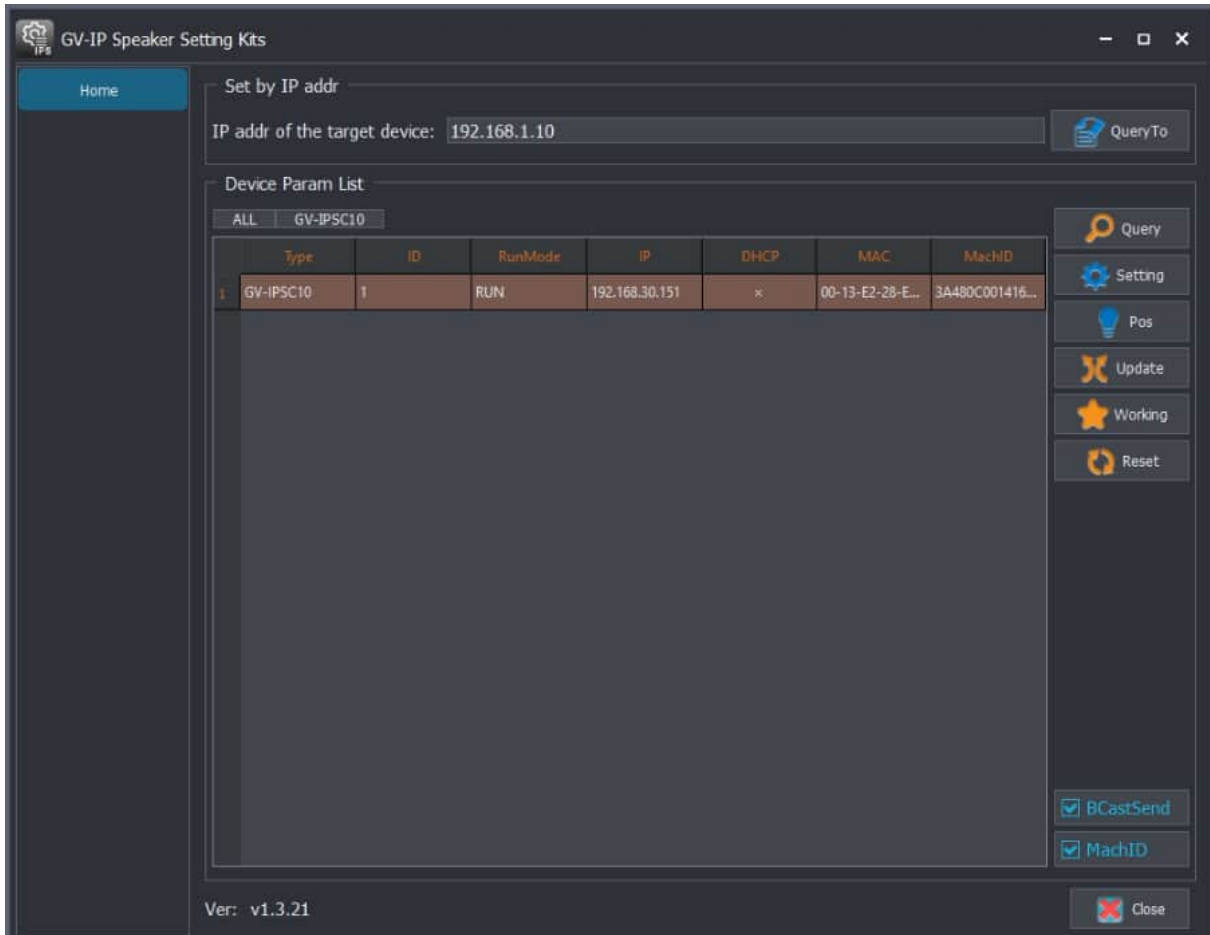
Note:

1. If you want to associate a camera with another speaker, you must remove the camera's image from the Live View window before enabling the IP Speaker Setting to the camera.
 2. You can associate a speaker with multiple cameras
-

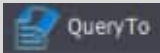
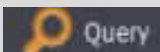


3. GV-IP Speaker Setting Kits

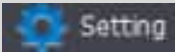

Download and install the GV-IP Speaker Setting Kits from our [download page](#).



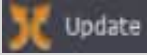

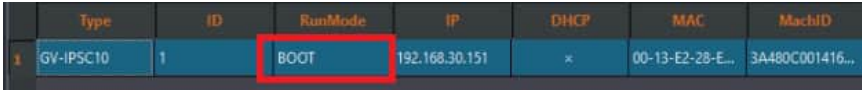
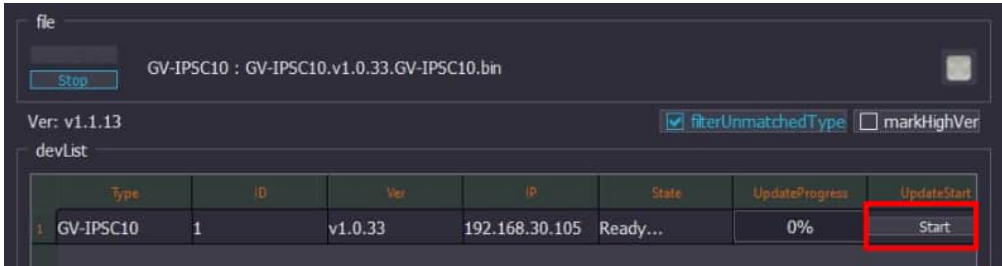


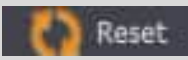
The controls in the window:

Name	Description
Query To 	If you already know the IP address of the speaker, type its IP address in the left field and click Query to to find it in the network.
Query 	Find the IP address of the speaker, under the same LAN as the GV-IP Speaker Setting Kits and GV-Control Center.



<p>Setting</p> 	<p>When you click the Setting button, you will be prompted to enter Use and Password. By default, the Use ID is admin and the Password is admin123.</p> <p>[NormParam]</p> <ul style="list-style-type: none"> ■ DevID: The Device ID. ■ Dev Network Param Setting: Configure a fixed IP address for the speaker. Or select DHCP to have an IP address assigned by a DHCP server within the network. ■ Update IP: The option is used to update the firmware of the speaker. Enter the IP address of the PC used to update the firmware. ■ Confirm Verify: Enable to check any IP conflicts. ■ ReVal: Return factory default settings. ■ <p>[ONVIFParam]</p> <p>By default, the Use ID is admin and the Password is admin123. You can change both ID and Password.</p> <p>[SipParam]</p> <p>Connect a GV-IP Speaker to the SIP server. Use the SIP server to call the speaker and speak into the microphone installed on the SIP server in order to broadcast via the speaker.</p> <ul style="list-style-type: none"> ■ RegIp: Type the IP address of the SIP server. ■ RegPort: The port of the SIP server is 5060 by default. ■ Use: Type the ID number of the speaker as assigned on the SIP server. ■ Password: Type the password of the speaker as assigned on the SIP server. <p>[Setting]</p> <ul style="list-style-type: none"> ■ CompatProgram: Keep the compatible programs option turned OFF. ■ 1/PlayPriorityH, 1/PlayPriorityM, 1/PlayPriorityL: Set High, Medium and Low priorities to the protocols IP, SIP, ONVIF / RTSP. The default order of priority is IP, SIP, and ONVIF / RTSP.
<p>Pos</p> 	<p>Click the button to play a sample video through the speaker.</p>



<p>Update</p> 	<p>To update the speaker firmware, follow the steps below:</p> <ol style="list-style-type: none"> 1. Select a speaker in the list. 2. Specify the IP address of the PC used to upgrade firmware ( Setting > Update IP). See Update IP under [NormParam] as described above. 3. Click Update to remove the speaker from the working mode, and then click Query. The Run Mode of the speaker in the list changes from RUN to BOOT.  <ol style="list-style-type: none"> 4. Run GV-IP Speaker Update Kits. <ol style="list-style-type: none"> A、Click Open File to locate a firmware file. B、Click Start to search for speakers in BOOT mode. C、Select a speaker in the list D、Click Start to start firmware upgrade.  <p>Note: On the GV-IP Speaker Update Kits user interface:</p> <ol style="list-style-type: none"> 1. filterUnmatchedType: When the option is enabled, only search for speakers with the same firmware versions. 2. markHighVer: When the option is enabled, it will detect new firmware version available, and display the message “Higher version”. 
<p>Working</p> 	<p>Change the Run Mode of the speaker from Boot to RUN.</p>
<p>Reset</p> 	<p>Restart the speaker.</p>
<p><input checked="" type="checkbox"/> BCastSend</p>	<p>Enable this option to use the broadcasting method to set up a speaker when the speaker and the computer used for configure it are on different network segments.</p>



MachID

Machine ID. Enable **BCastSend** and **MachID** for speaker configurations when two speakers have the same IP address.