



How to upgrade GV-LPR2812-DL firmware

Article ID: GV4-25-05-02

1. Introduction

To upgrade the GV-LPR2812-DL's firmware, follow the three steps outlined below. Without completing the three procedures, the GV-LPR2812-DL may not function properly after firmware upgrade.

Step 1: Upgrade the Factory firmware

with the file "**A08-GV-LPR2812-DL_VX.XX_XXXX_XX_XX.bin**".

For example, A08-GV-LPR2812-DL_V1.01_2025_03_13.bin

Step 2: Upgrade the Web firmware

with the file "**GV-LPR2812-DL_VXXX_XXXXXXXXX.bin**".

For example, GV-LPR2812-DL_V101_20250423.bin

Step 3: Upgrade the Engine firmware

with the file "**GV-LPR2812-DL_VXXX_XXXXXXXXX_model_XXX.bin**".

For example, GV-LPR2812-DL_V101_20250514_model_CAL.bin

For Step 3, different country engines are contained in a folder. To find and upgrade the appropriate Engine firmware, refer to the nation abbreviation in the table below.

1	CAL	California (USA)	12	LTU	Lithuania
2	COL	Colombia	13	MYS	Malaysia
3	CZE	Czech Republic	14	NLD	Netherlands
4	DEU	Germany	15	ROU	Romania
5	EUE	European Union	16	SVK	Slovakia
6	FRA	France	17	TWN	Taiwan
7	GBR	United Kingdom	18	UKR	Ukraine
8	GOA	Georgia (USA)	19	VNM	Vietnam
9	HUN	Hungary	20	BRA	Brazil
10	ISR	Israel	21	MMR	Myanmar
11	ITA	Italy	22	DEB	Germany Border




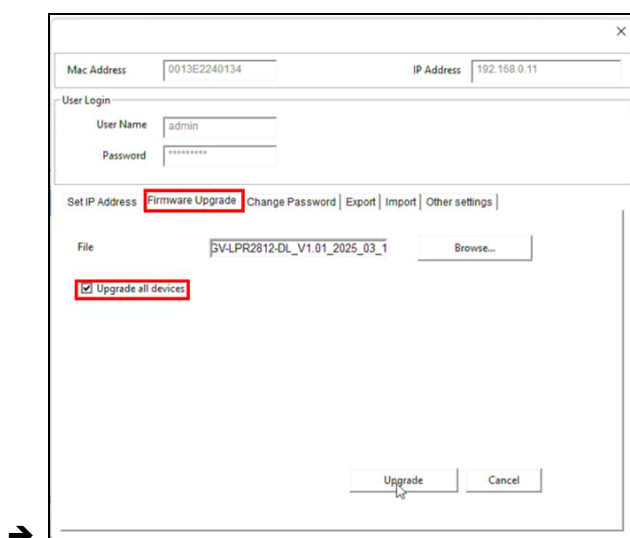
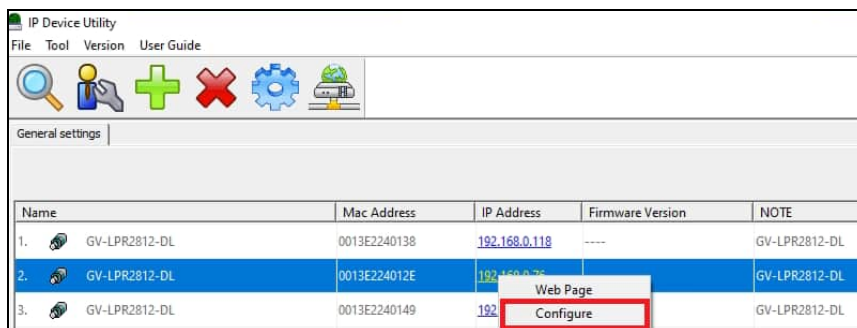
2. Instructions

To upgrade the camera firmware, you can use *GV-IP Device Utility* or through its *Web interface*.

2.1 Using GV-IP Device Utility

To upgrade the camera firmware, use **GV-IP Device Utility** downloaded from the [GeoVision website](#). There are three types of firmware required to upgrade GV-LPR2812-DL: **Factory firmware**, **Web firmware** and **Engine firmware**.

1. Ensure the PC used to upgrade the firmware is under the same LAN as the camera.
2. On the GV-IP Utility window, click the  button to search for IP devices in the same LAN. Click the **Name** or **Mac Address** column to sort.
3. Find the camera with its Mac Address, click on its IP address, and select **Configure**. You are prompted to enter the camera's login ID and password. On the setup dialog box, select the **Firmware Upgrade** tab. If you have multiple cameras installed, select **Upgrade all devices** to update the firmware for all detected cameras in the list.





4. To upgrade the camera firmware, complete the three procedures outlined below.
 - Every firmware upgrade takes about 2 mins and restarts the camera.
 - **Re-search** for cameras with the Utility after each firmware upgrade.

- A. Click **Browse** to locate the Factory firmware file
“A08-GV-LPR2812-DL_VX.XX_XXXX_XX_XX.bin” saved in the PC, and click **Upgrade**. When the Factory firmware upgrade is complete, re-search for cameras, and return to the upgrade setup dialog box.
- B. Click **Browse** to locate the Web firmware file
“GV-LPR2812-DL_VXXX_XXXXXXXXX.bin” saved in the PC, and click **Upgrade**.
When the Web firmware upgrade is complete, re-search for cameras, and return to the upgrade setup dialog box.
- C. Click **Browse** to locate the Engine firmware file
“GV-LPR2812-DL_VXXX_XXXXXXXXX_model_XXX.bin” saved in the PC, and click **Upgrade**.

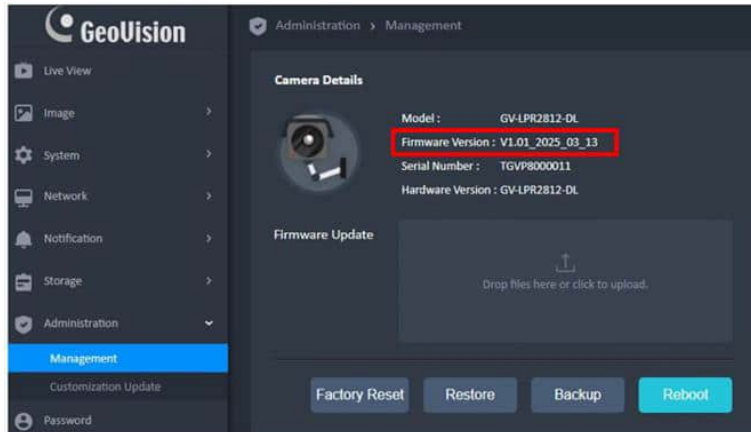
When the three firmware upgrades are complete, your camera is upgraded to the most recent versions.

IMPORTANT: If you are using Beta firmware (earlier than V1.00), you must load the camera's default settings following the firmware upgrade. On the camera's Web interface, click **Administration > Management**, and click the **Factory Reset** button > **Reset Network Settings** to restore all system settings to factory default.

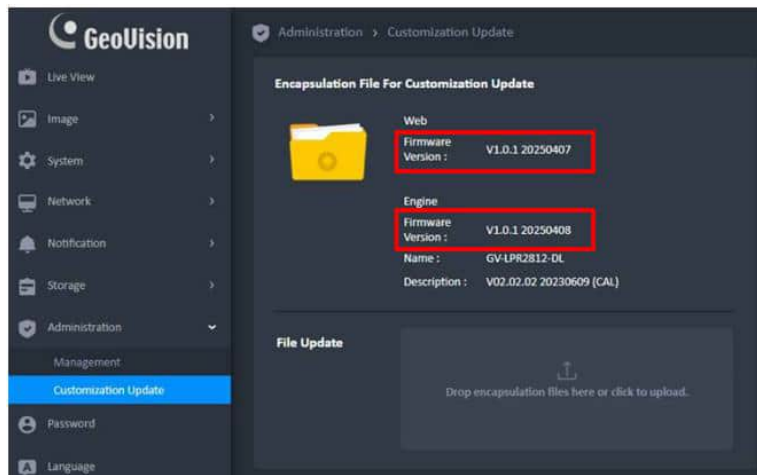


5. To verify the camera's current firmware versions, you can go to the camera's Web interface.

- To check the Factory firmware version, go to **Administration > Management**, and find the Firmware version.



- To check the Web or Engine firmware versions, go to **Administration > Customization Update**, and find the Web and Engine firmware versions.



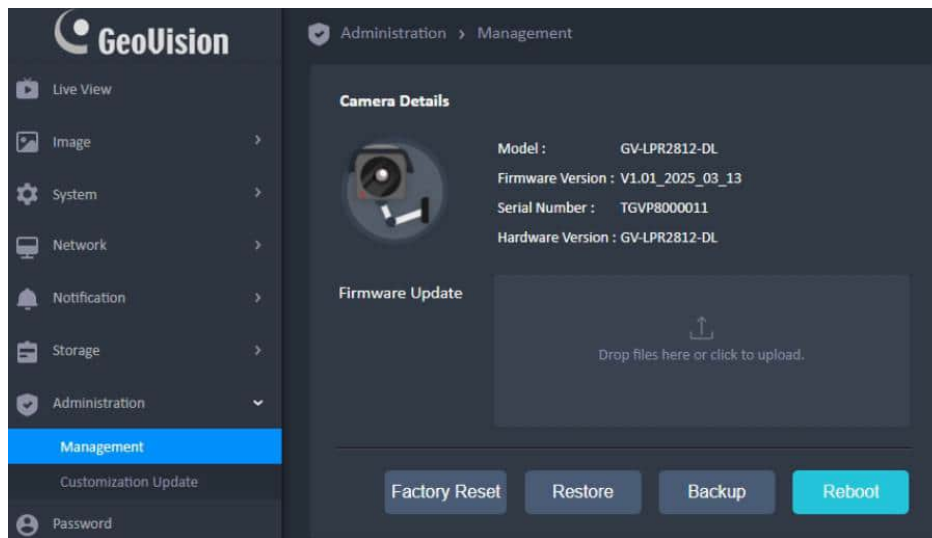


2.2 Through the Web Interface

There are three types of firmware required to upgrade GV-LPR2812-DL: **Factory firmware**, **Web firmware** and **Engine firmware**.

To upgrade the Factory firmware:

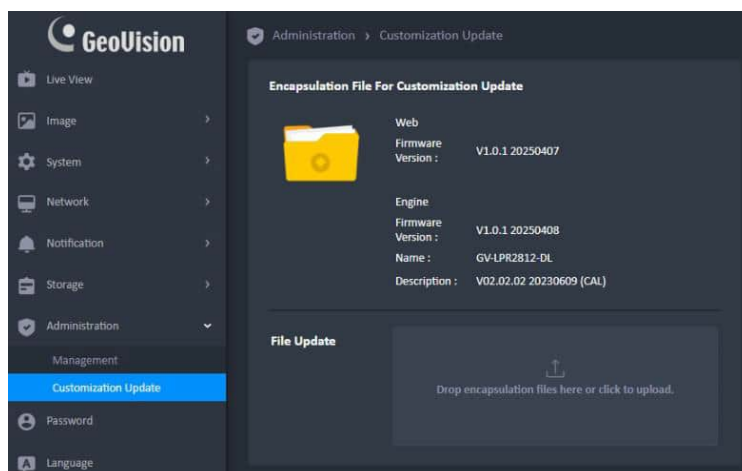
1. Go to **Administration > Management**.
2. To upgrade the firmware, drop or locate the Factory firmware file **“A08-GV-LPR2812-DL_VX.XX_XXXX_XX_XX.bin”**.



3. When the Factory firmware upgrade is complete, relog in the camera to proceed with the Web firmware upgrade.

To upgrade the Web firmware:

4. Go to **Administration > Customization Update**.
5. Drop or locate the Web firmware file **“GV-LPR2812-DL_VXXX_XXXXXXXXX.bin”** to the page.

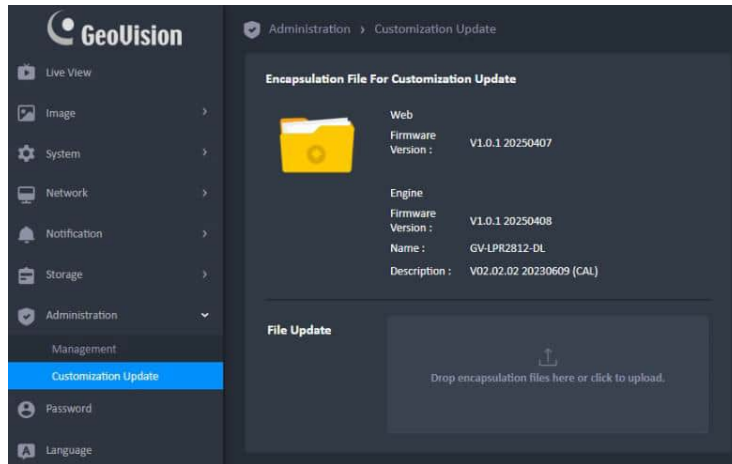




- When the Web firmware upgrade is complete, relog in the camera to proceed with the Engine firmware upgrade.

To upgrade the Engine firmware:

- Go to **Administration > Customization Update**.
- Drop or locate the Engine firmware file
“GV-LPR2812-DL_VXXX_XXXXXXXX_model_XXX.bin” to the page



- When the Engine firmware upgrade is complete, your camera is upgraded to the most recent versions.

IMPORTANT: If you are using Beta firmware (earlier than V1.00), you must load the camera's default settings following the firmware upgrade. On the camera's Web interface, click **Administration > Management**, and click the **Factory Reset** button > **Reset Network Settings** to restore all system settings to factory default.
