

Quick Start Guide

GV-3D People Counter V2





© 2021 GeoVision, Inc. All rights reserved.

Under the copyright laws, this manual may not be copied, in whole or in part, without the written consent of GeoVision.

Every effort has been made to ensure that the information in this manual is accurate. GeoVision, Inc. makes no expressed or implied warranty of any kind and assumes no responsibility for errors or omissions. No liability is assumed for incidental or consequential damages arising from the use of the information or products contained herein. Features and specifications are subject to change without notice.

GeoVision, Inc.
9F, No. 246, Sec. 1, Neihu Rd.,
Neihu District, Taipei, Taiwan
Tel: +886-2-8797-8377
Fax: +886-2-8797-8335
<http://www.geovision.com.tw>

Trademarks used in this manual: *GeoVision*, the *GeoVision* logo and *GV* series products are trademarks of GeoVision, Inc. *Windows* is the registered trademark of Microsoft Corporation.

October 2021

Scan the following QR codes for product warranty and technical support policy:



[Warranty]



[Technical Support Policy]

Contents

1. Introduction.....	2
1.1 Packing List.....	2
2. Overview.....	3
2.1 Bottom and Rear Views	3
2.2 Terminal Block.....	4
3. Connection.....	5
4. Wall / Ceiling Mount.....	6
5. Accessing the Web Interface	8
5.1 Setting the GV-3D People Counter V2	9
5.2 Accessing Counting Results	12
6. Upgrading the Firmware.....	13

1. Introduction

Welcome to the *GV-3D People Counter V2 Quick Start Guide*. In the following sections, you will learn about the basic installations and configurations of the GV-3D People Counter V2. For the detailed user's manual, see [GV-3D People Counter V2 User's Manual](#).

1.1 Packing List

1. GV-3D People Counter V2



2. SDHC Micro SD card



3. Ceiling Mount Kit



4. Wall Mount Kit



5. Installation Sticker x 2 (Wall mount / Ceiling mount)



6. Screws



7. Anchor



8. Documents Download Guide

9. Warranty Card

2. Overview

2.1 Bottom and Rear Views



No.	Name	Function
1.	Lens	Captures people's image.
2	Ethernet Port	A plug for PoE (IEEE 802.3af).
3	Default Button	Resets all configurations to factory default settings.
4	Terminal Block	The connectors for the sensor input, alarm output and GPS receiver, see <i>1.3.3 Auxiliary Device Connectors</i> .
5	Memory Card Slot	Inserts a micro SD card (SD/SDHC/SDXC/UHS-I, Class 10) to store recording data.

2.2 Terminal Block

The 8-pin terminal block, located on the rear panel, provides interfaces for connecting a digital input, a relay output and a GV-GPS Receiver.

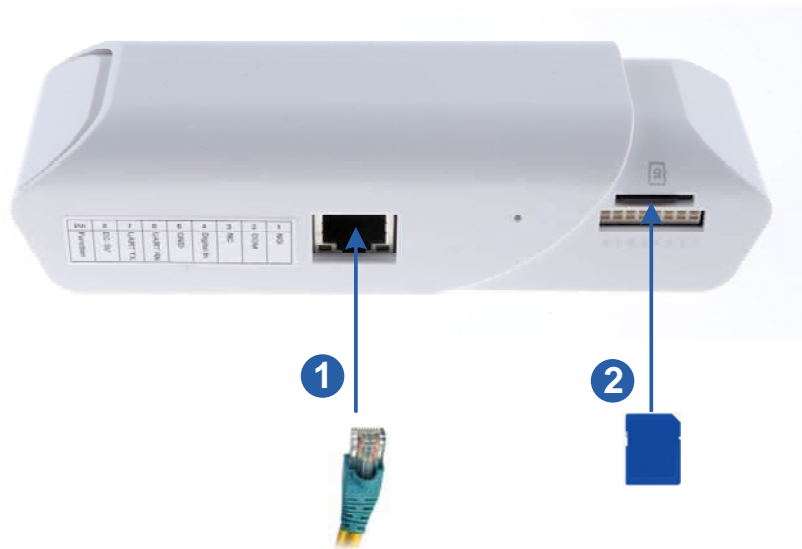


PIN Assignment

Pin	Function
1	NO
2	COM
3	NC
4	Digital Input
5	Ground
6	UART RX for GV-GPS Receiver
7	UART TX for GV-GPS Receiver
8	DC 5V Out for GV-GPS Receiver

3. Connection

The instructions below describe the basic connection required to operate GV-3D People Counter V2.



1. Plug a standard network cable or PoE to provide power supply and Internet connection.
2. Insert a micro SD card.

Note: GV-3D People Counter V2 only supports PoE. You may purchase GV-PA191 PoE adapter to connect to your router. See *1.2 Optional Accessories*.

4. Wall / Ceiling Mount

You can use the Wall / Ceiling Mount Kit to mount GV-3D People Counter V2 on a desired location.

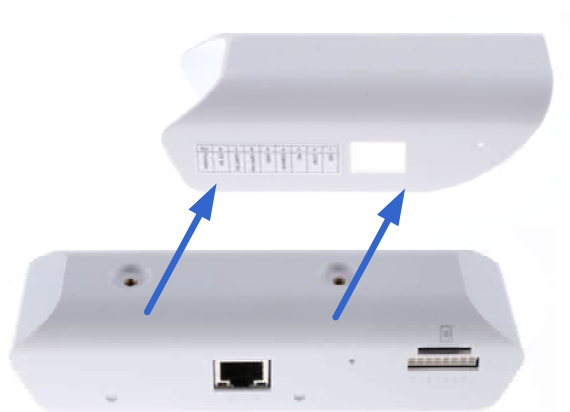
Wall Mount



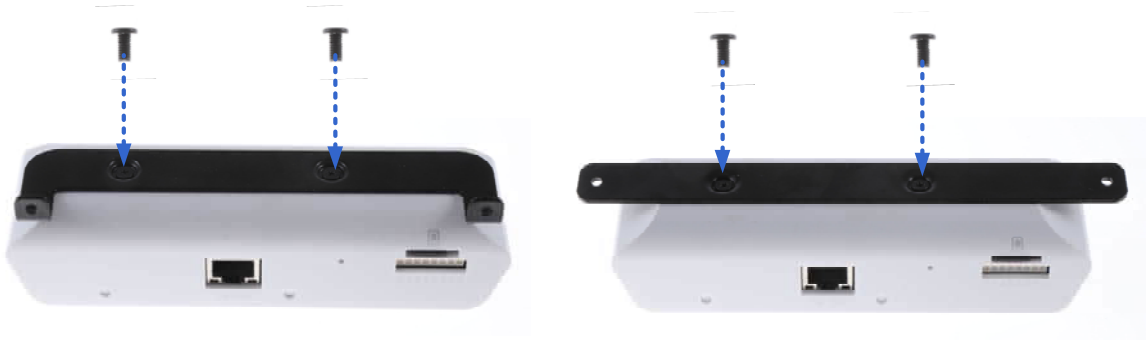
Ceiling Mount



1. Remove the device's outer case.



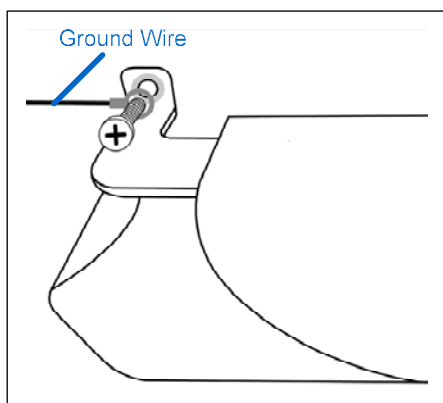
2. Secure the desired mounting kit to the designated position with 2 screws.



3. Reassemble the outer case.



4. Put the installation sticker to the wall with the arrow pointing up.
5. Drill 2 holes according to the sticker and insert the 2 screw anchors to the 2 holes.
6. Secure the device to the wall with 2 long screws.
7. Optionally install the ground wire with the screw as shown below:



5. Accessing the Web Interface

Once the GV-3D People Counter V2 is connected to the network, you can view counting data by using its built-in Web interface, GV-Web Report Lite. When the device is connected to a network with a DHCP server, it will be automatically assigned with a dynamic IP address. To look up this IP address, use **GV-IP Device Utility** described in *Chapter 4 GV-IP Device Utility* in *GV-3D People Counter User's Manual*.

However, if you do not have a DHCP server on your network, access the device by its default IP address **192.168.0.10**.

System Requirements

To access the device, **Microsoft Internet Explorer 10** or above is required.

Logging In

1. In your Web browser, type the IP address or the domain name of the device in the **Location / Address** field. This page appears.



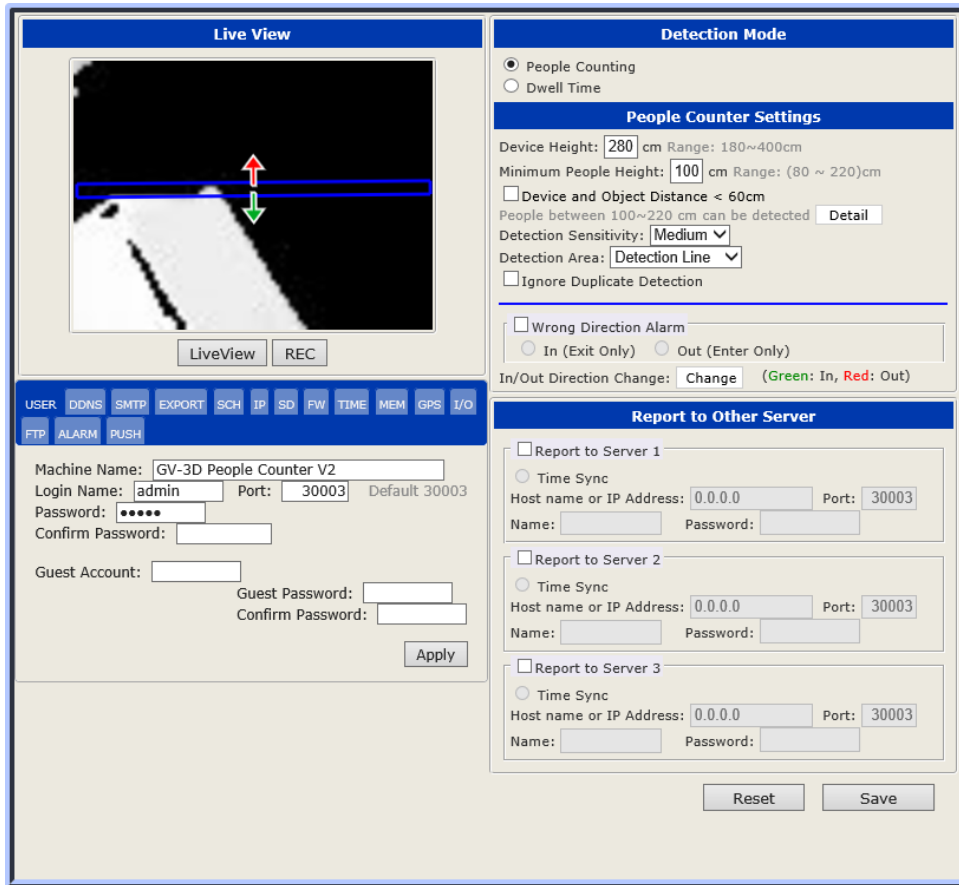
2. Select the **Language**.
3. Type the default ID and password **admin**.
4. Type the characters shown in the image and click **Login**. The Counting Signage page appears, which will display real-time counting data after you set up the device.
5. Click **Setup** on the top left corner to set up the device.



2020-06-05 0:00 ~ 2020-06-06 0:00	
In	27
Out	75
Stay	0

5.1 Setting the GV-3D People Counter V2

To set the GV-3D People Counter V2, click the **Setup** tab on the top. The Setup page appears.

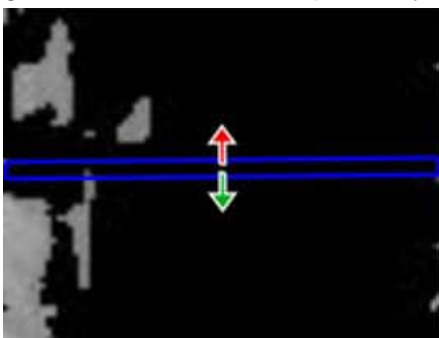


[Detection Mode] Choose the desired detection mode from People Counting or Dwell Time.

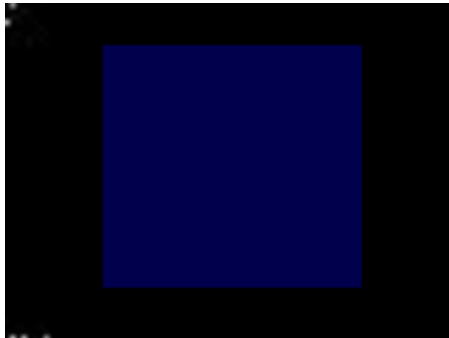
- **People Counting:** Counting and recording the number of people entering and leaving a designated area based on the directions set.
- **Dwell Time:** Record the dwell time of persons staying within a designated area.

[Live View] Draw a box on the live view to mark the boundary of the detection zone.

- For People Counting, people moving across the blue box in the direction of the red and green arrows will be respectively counted as *Out* and *In*.



- For Dwell Time, a timer is set on every person entering the designated area, which only stops and records the dwell time upon the person leaving the area.



- **Live View:** Click to see the black and white live image of the detection area captured by the infrared sensor of the device.
- **REC:** Record the live view for 30 seconds. Only one video can be stored in the SD card at a time. The existing recording will be overwritten by the new recording.
- **Download Recorded File:** You can download the recorded file and provide the recording to the maintenance attendants for troubleshooting.

Note:

1. **People Counting** and **Dwell Time** cannot function simultaneously.
 2. For **Dwell Time**, make sure enough space is left outside the edges of the designated area for determining the detected persons to be fully out of the area upon leaving.
-

People Counter Settings

Device Height: cm Range: 180~400cm

Minimum People Height: cm Range: (80 ~ 220)cm

Device and Object Distance < 60cm
 People between 100~220 cm can be detected Detail

Detection Sensitivity: ▼

Detection Area: ▼

Ignore Duplicate Detection

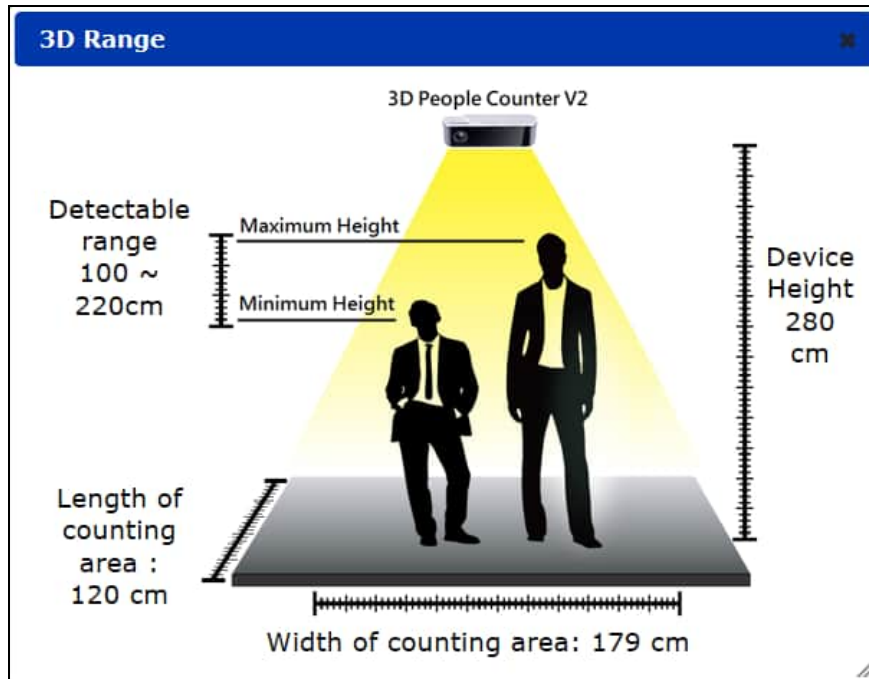
Wrong Direction Alarm

In (Exit Only) Out (Enter Only)

In/Out Direction Change: Change (Green: In, Red: Out)

- **Device Height:** Type the height of the installed device. Depending on the height where the device is installed, the range of detectable height for people varies.
- **Minimum People Height:** Type the minimum height for a person to be detected.

- **Device and Object Distance < 60 cm:** Select this option when the distance of the installed device and intended objects is lower than 60 cm. Once the option is selected, the detection range will be reflected below.
- **Detail:** Click the button to see an illustration of the detectable range and the dimensions of the detection area based on the height you specified.



For details, see 3.2 *Setting the GV-3D People Counter V2* in the *GV-3D People Counter V2 User's Manual*.

Note: GV-3D People Counter V2 is only compatible with GV-Web Report V3.0.0.0 or later.

5.2 Accessing Counting Results

After the GV-3D People Counter V2 is properly configured and the data collection process begins, you can access the following pages for the people counting data in the format of tables, graphs and charts:



- **Device:** Displays the real-time counting data in tables and bar charts from all connected devices. The data is updated every minute.
- **Group:** Allows you to organize the connected GV-3D People Counter V2 into Groups and view the data of created groups.
- **Log:** Allows you to view the data of a specified time period from the selected GV-3D People Counter V2.
- **Query:** Provides counting data on the daily, weekly, monthly and yearly graphs and tables.

Note:

1. When detection mode is set as *Dwell Time*, only the persons entering the designated area are counted and displayed as In.
 2. When detection mode is set as *Dwell Time*, Log and Query functions are not supported.
-

For details, see 3.2 *Setting the GV-3D People Counter V2* in the *GV-3D People Counter V2 User's Manual*.

6. Upgrading the Firmware

We will periodically release the updated firmware on the website. You can update firmware by using GV-Web Report Lite.

1. Download the latest firmware to your computer.
2. Log onto the GV-Web Report Lite and click **Setup** on the upper right.
3. Select the **FW** tab.
4. In the **Upload File** field, click **Open** to select the firmware file.
5. Click **Apply** to begin updating firmware. The device will restart after the firmware upgrade is complete.