



IBV-A4S Junction Box Adapter Plate

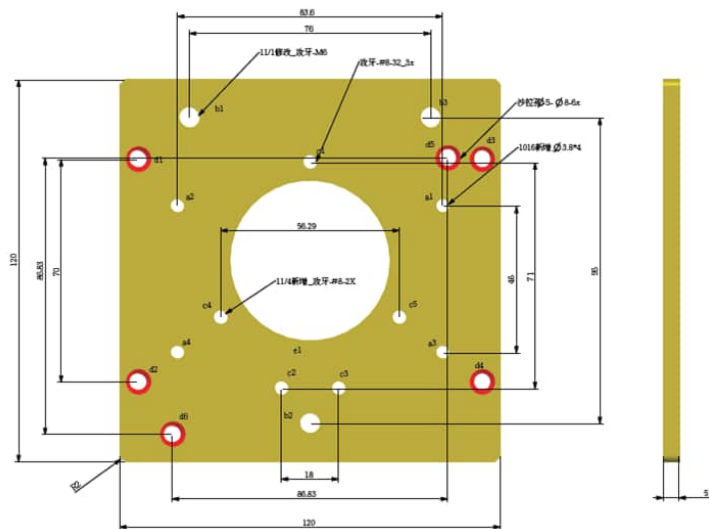
Installation Guide

C6697M

Package Contents

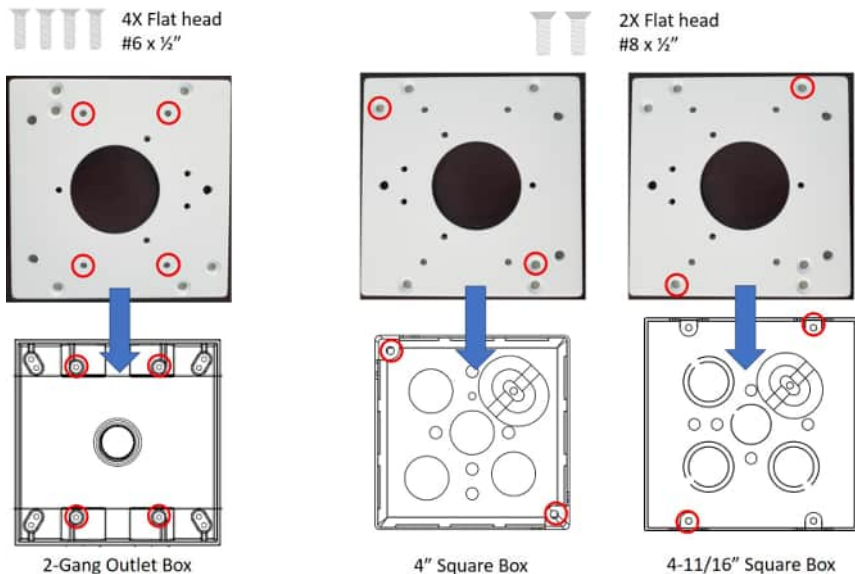
- Adapter plate for junction box
- Screws: 4x flathead countersunk 6# x12; 3x pan head M6 x6; 5x flathead countersunk 8# x1/2"

IBV-A4S Junction Box Adapter Plate Dimension Drawing



Installation

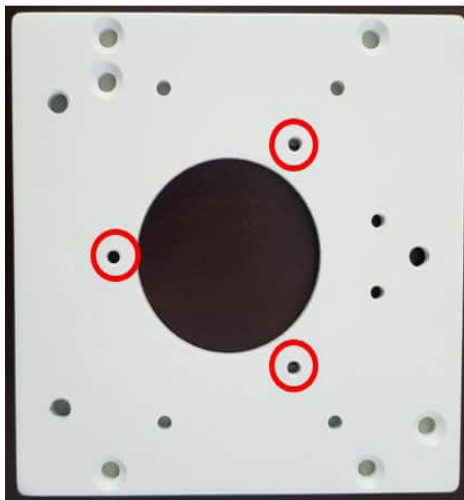
1. Install the adapter plate to one of the different types of 4" junction boxes using the included screws as shown below.



2. Secure the camera to the adapter plate using three #8 screws in the location circled below.



3X Flat head
#8 x 1/2"



3. Refer to the camera's Quick Installation Guide for the rest of the installation instructions.

Pelco, Inc.

625 W. Alluvial, Fresno, California 93711 United States

USA & Canada Tel (800) 289-9100 Fax (800) 289-9150

International Tel +1 (559) 292-1981 Fax +1 (559) 348-1120

www.pelco.com