

This manual is intended for users of the DA-JB4600 junction box. It includes instructions for mounting the DA-JB4600 junction box to a wall.



- **This junction box is intended to be used with some models of cameras. Do not use it with other models of cameras.**
- **This installation should be performed by a qualified service personnel in conformance to all local codes.**
- **You may need to reinforce the wall. If the wall is not strong enough to support the camera, the camera may fall.**
- **Do not use this product for other purposes.**

## Mounting: DC-D4213WRX, DC-D4513WRX

- 1 Mount the bracket to the wall by using the screws.
- 2 Insert cables from external devices, network and power adapter.
- 3 Pass the cable through the top cover, insert the waterproof bushing provided with the product into the cable and insert it into the top cover hole as the figure.



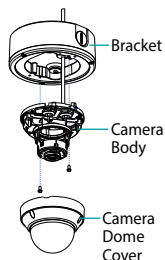
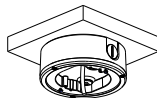
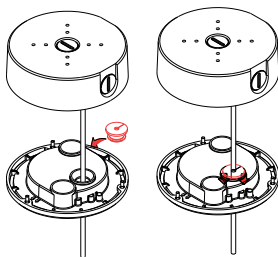
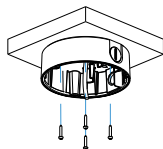
- Cable diameters that can be fastened to the bushing are 4-6mm(0.15"-0.23"), and other sizes require a separate sealing finish.
- Bushings that do not tighten cables and unused holes require a separate sealing finish.

- 4 Fasten the top cover and the body.
- 5 Connect the cable to the camera and screw the camera onto the top cover.



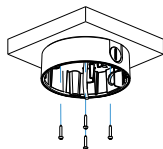
If the cable is bent too much when the camera is installed, a separate sealing finish is required as the waterproof function may be weakened.

- 6 Screw the camera dome cover onto the camera body using the Allen wrench provided with the product.
- 7 Turn on power.

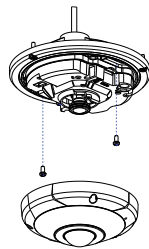


## Mounting: DC-Y6513WRX, TC-D4222WRX

- 1 Mount the bracket to the wall by using the screws.
- 2 Insert cables from external devices, network and power adapter.

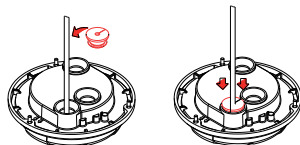


- 3 Pass the cable through the top cover and then fasten the camera to the top cover.
- 4 Screw the camera top cover onto the camera body using the Allen wrench provided with the product.

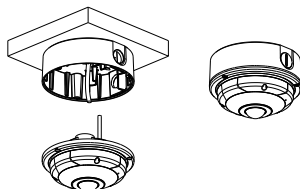


- 5 Insert the waterproof bushing provided with the product into the cable and insert it into the top cover hole as the figure.

- Cable diameters that can be fastened to the bushing are 4-6mm(0.15"-0.23"), and other sizes require a separate sealing finish.
- If the cable is bent excessively when tightening the bushing, the waterproofing function may be weakened.
  - Bushings that do not tighten cables and unused holes require a separate sealing finish.



- 6 Connect the cables and fix the top cover to the bracket.
- 7 Turn on power.



### Connect your specific model of camera to the bracket as follows:



Screw No.1 (2-point): DC-Y6513WRX using 2 screws

Screw No.2 (2-point): TC-D4222WRX using 2 screws

Screw No.3 (3-point): DC-D4213WRX, DC-D4513WRX using 2 screws

### Dimensions

Unit: mm (inch)

